

HEAD OFFICE

6, Pangyo-ro 319beon-gil, Bundang-gu, Seongnam-si, Gyeonggi-do, 13488 South KOREA Tel: 1588-5772 For more information, please visit our website hanwha-security.com

Global Networks

- Hanwha Techwin America
- Hanwha Techwin Europe
- Hanwha Techwin Middle East FZE
- Hanwha Techwin Singapore Branch
- Hanwha Techwin Russia Office
- Hanwha Techwin Hanoi / Ho Chi Minh Office

Scan this QR code to see details of global network



**Marine Electronics & Satellite Communications**

[www.mackaymarine.com](http://www.mackaymarine.com)

**Mackay Marine – High Seas**

+1 281 479 1515 [marinesales@mackaymarine.com](mailto:marinesales@mackaymarine.com)

**Mackay Communications, Satellite Solutions**

+1 919 850 3100 [satserv@mackaycomm.com](mailto:satserv@mackaycomm.com)

**Mackay Marine Canada**

+1 902 469 8480 [sales.canada@mackaymarine.com](mailto:sales.canada@mackaymarine.com)

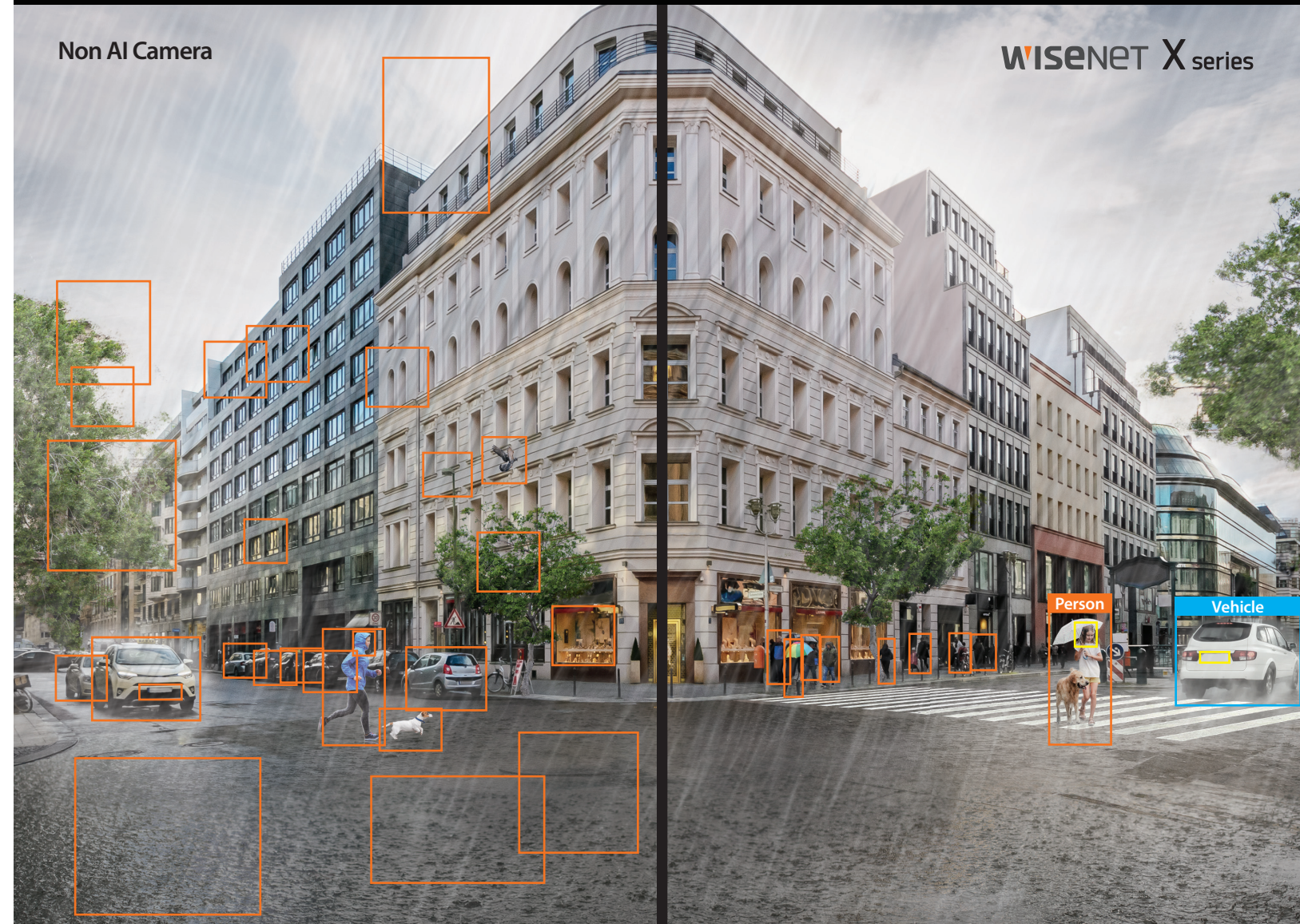
**Mackay Marine Alaska & Pacific Northwest**

[NWsales@mackaymarine.com](mailto:NWsales@mackaymarine.com) Ballard/SEA, WA +1 206 282 8080

Dutch Harbor, AK +1 253 922 6260



# Reduce false alarms with the new X series AI cameras.



- AI based object detection for your operational efficiency (Person, Face, Vehicle, License Plate)
- AI based Enhanced Features - WiseNR II, WiseStream III, More accurate BI (Business Intelligence)
- Plug-in AI search support for Milestone, Genetec integration
- From 2MP to 4K resolution products
- Next level cybersecurity - UL CAP, FIPS 2.0



© 2021 Hanwha Techwin Co., Ltd. All rights reserved.

DESIGN AND SPECIFICATIONS ARE SUBJECT TO CHANGE WITHOUT NOTICE

Under no circumstances, this document shall be reproduced, distributed or changed, partially or wholly, without formal authorization of Hanwha Techwin Co., Ltd.

\* Wisenet is the proprietary brand of Hanwha Techwin, formerly known as Samsung Techwin.

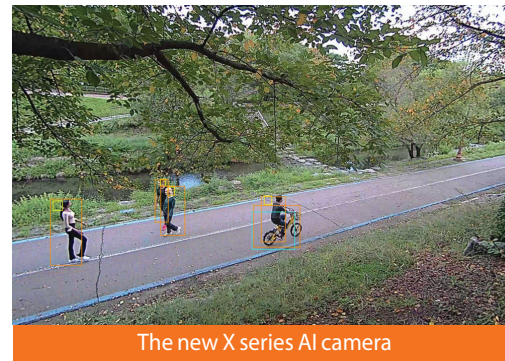
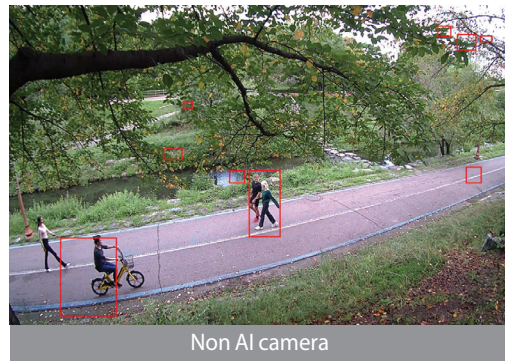
09-2021 (M.H)

[hanwha-security.com](http://hanwha-security.com)



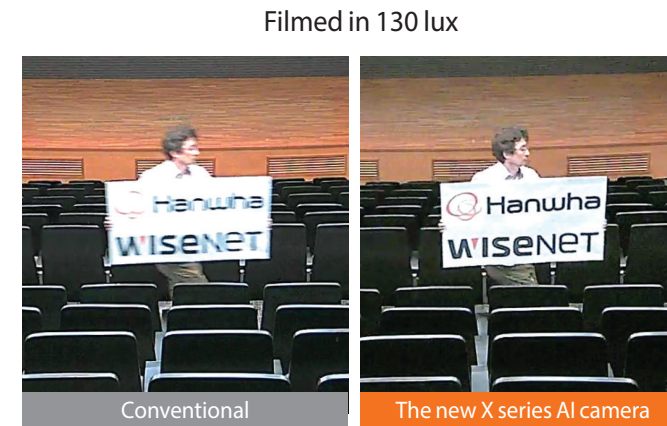
## Reducing False alarms based on AI

The new X series cameras utilize AI to detect and classify people, vehicles, faces, license plates and more in real-time. With a range of available resolutions from 2MP to 4K, the cameras' deep-learning algorithms can reliably identify multiple objects in distance. They can reduce false alarms caused by non-interesting motion such as wind-blown trees, shadows, or animals. Analytics become a reliable second pair of eyes to operators helping them know where to look for important real-time events, while making post-event forensic searches highly efficient.



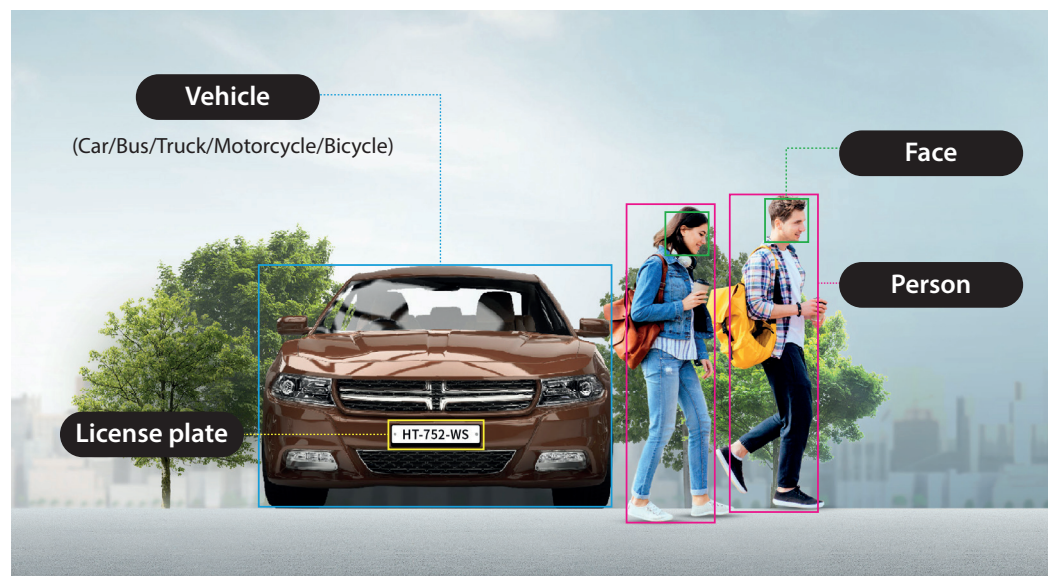
## AI-based WiseNR II and Preferred Shutter Control

AI can also play an important role in image quality. WiseNR II is a new enhancement which utilizes AI to identify movement and reduce blur in noisy, low light environments. AI-based Preferred Shutter technology automatically adjusts the shutter speed based on classified objects in motion and the lighting conditions in a scene to reduce motion blur and deliver the clearest images.



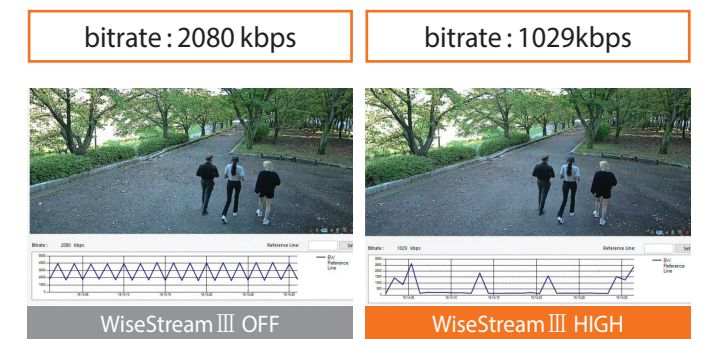
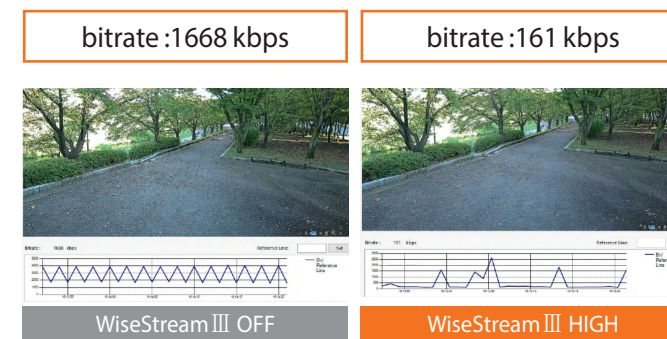
## AI-based object detection for operational efficiency

Metadata including information (person, face, vehicle, license plate) is sent to the back-end server and used to extract information on specific events. Operators are able to search AI events on the back-end server. This greatly enhances the search efficiency and reduces the time spent on searching events. It can also reduce false alarms while operators are monitoring scenes.



## AI-based Image Optimization, WiseStream III

By utilizing AI-based object detection, WiseStream III technology adjusts the video encoder to focus maximum video quality on the detected objects in a scene while scaling back encoding on the rest of the scene.



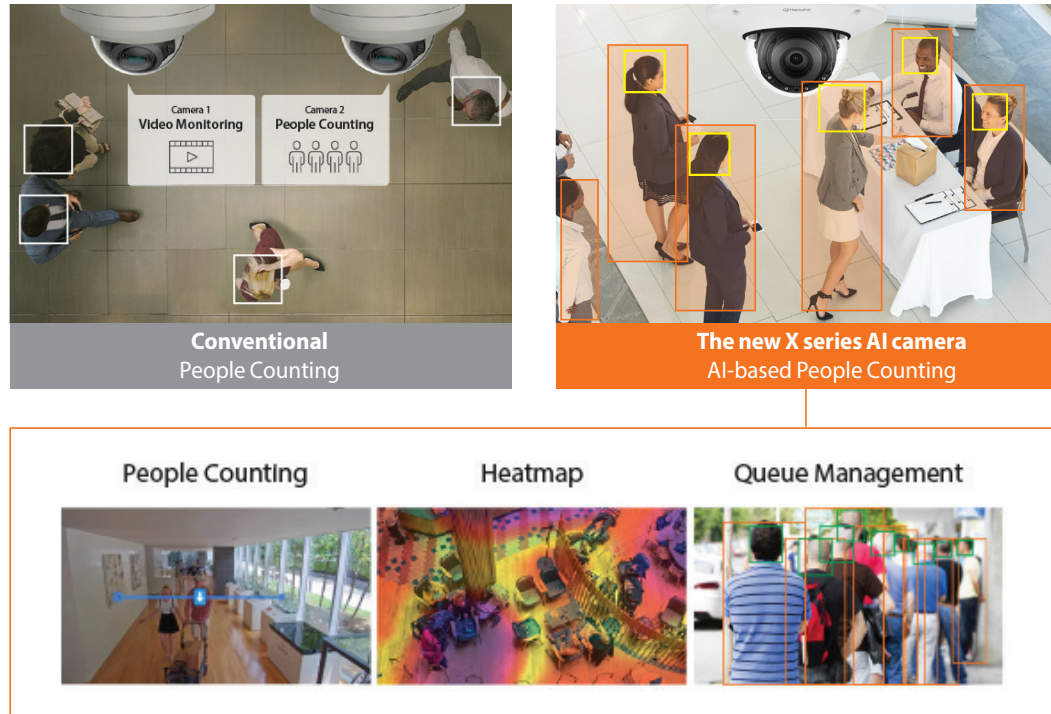
No object in the scene

Object in the scene



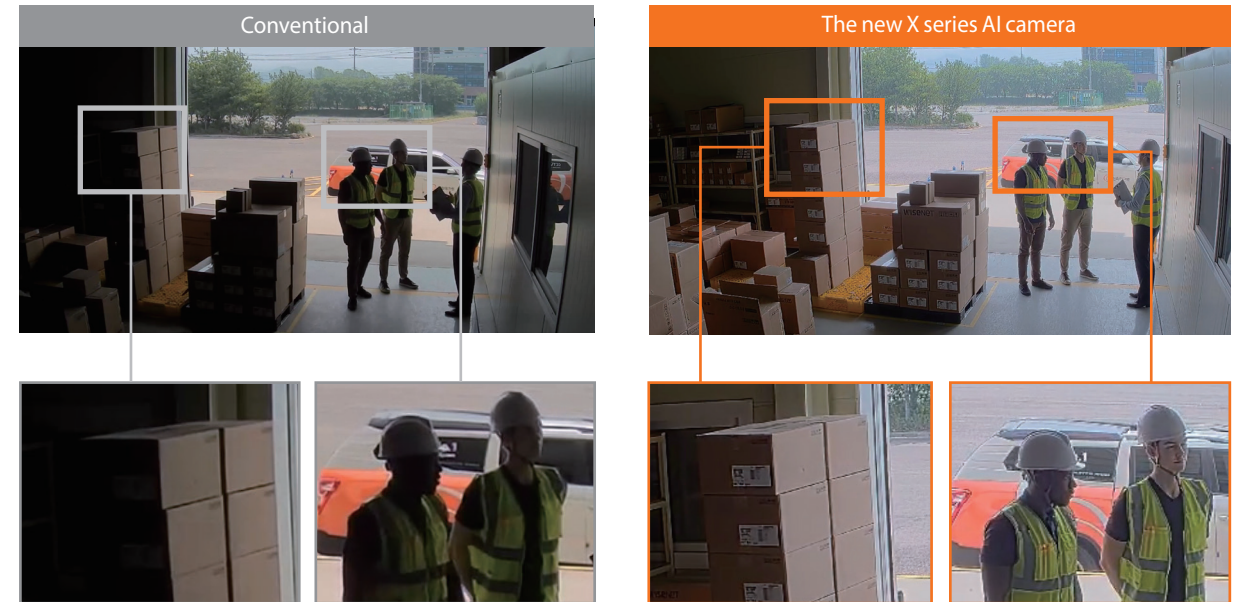
## More accurate business intelligence

The new X AI cameras overcome the inconvenience of conventional cameras and save the installation expenses. Users had to install additional cameras for Business Intelligence (People counting and Heatmap). However, X AI cameras can detect and classify people at any angle without additional camera installation.



## Extreme WDR

The New X series AI camera's Extreme WDR uses scene analysis technology to optimize differences such as tone and contrast during frame synthesis to minimize motion artifacts. In addition, local contrast enhancement technology, which emphasizes high frequency areas step by step, improves the detail and clarity of images.



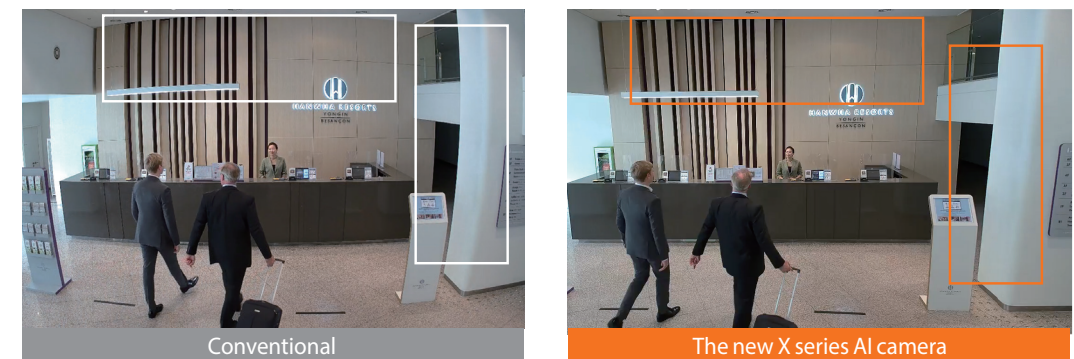
## WiselR

WiselR technology adjusts the output of IR LEDs according to the cameras' zoom magnification. In a wide field of view, it minimizes dark areas on the outside of the image using the IR LEDs uniformly. When the lens is focused more narrowly (telephoto), the IR LEDs are more concentrated to illuminate distant objects.



## Realistic image without image distortion

Wisenet X AI cameras perfectly corrected wide-angle lens distortion to overcome the limitations of conventional cameras. It generates advanced images as seen by the human eye, without lens distortion, despite being equipped with a wide-angle lens.



## Hard coated dome cover to reinforce durability

Hard coated dome bubble provides better resistance to scratches from external stimuli (sand, worker's hand, etc.). The degradation of resolution due to scratches can be minimized.



## Next Level Cybersecurity

The cybersecurity of new X series AI camera validates the boot process, securely stores key information, and preempts hacking risks by blocking unauthorized access. The cameras have been certified UL-CAP and Secure by default certification including device certificate Root CA.

X Plus camera has especially applied FIPS 140-2 certified TPM. The United States Federal Information Process Standards (FIPS) is a security standard for cryptographic modules the federal governments in the US, UK, Canada used to approve whether TPM is securely designed and implemented. With this certified TPM, users can utilize cameras more securely.



## Easier installation with semi-modular and modular structure

The new X series AI cameras apply the mount plate to provide intuitive installation and screw hole for corresponding an electric box (gangbox). For easier installation of bullet cameras, a single screw can be used to secure it in the desired direction instead of three screws needed for installing conventional bullet cameras.



X Plus cameras can be combined using magnets in modular design. Special packaging is applied for easy and fast pre-configuration for installers. These features save installation time and reduce cost.





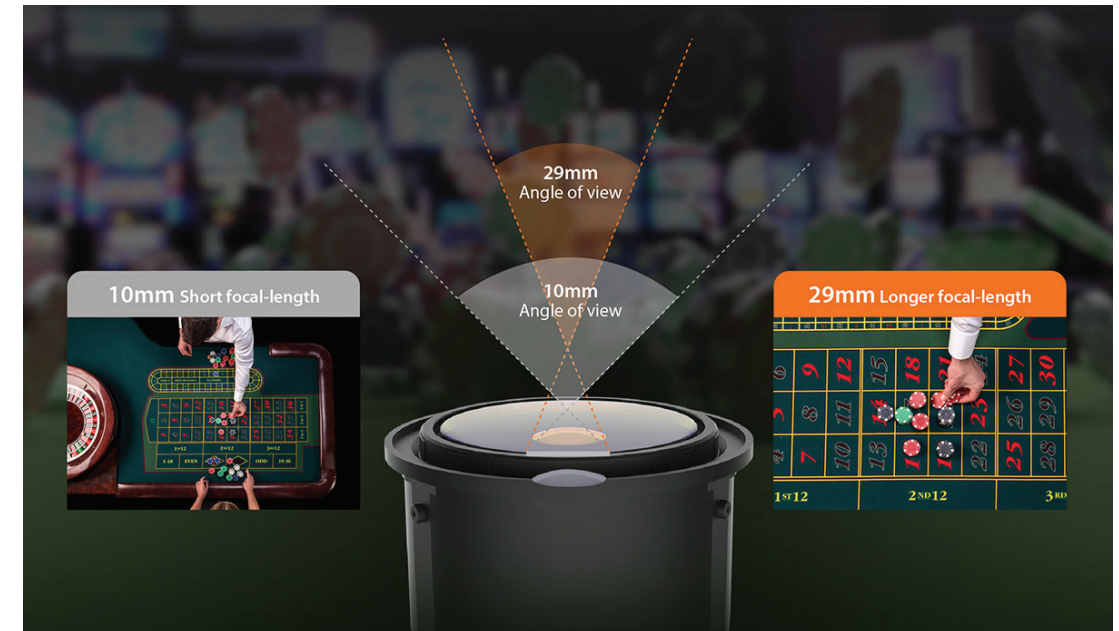
## Wisenet Installation app for easy set-up

Wisenet installation app and Wi-Fi dongles can connect cameras directly. Installers can check the monitoring positions and configure the zoom in/out, simple focus, screen capture, and flip/mirror/hallway view.



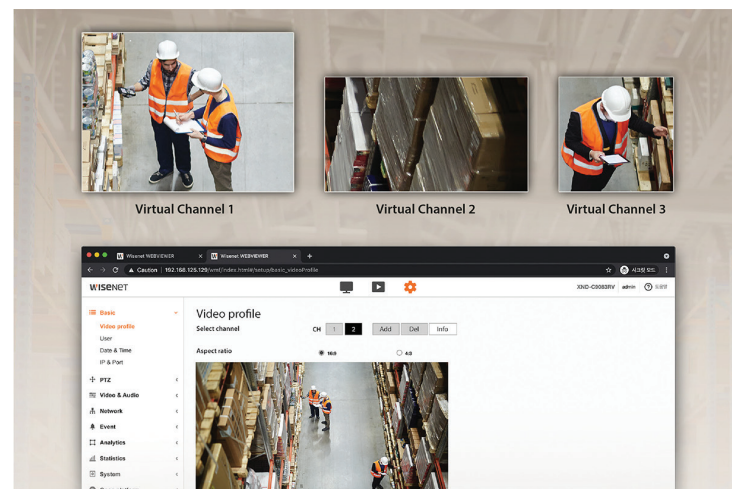
## Long focal-length(29mm) for casinos

XND-8093RV and XNV-8093R cameras have added long tele focal-length to see more details of distant objects. They are ideal for monitoring casinos or hotel lobbies where operators want close monitoring of objects.



## Up to three virtual channels

Operators can create up to three virtual channels in a different angle of view with a single camera. It provides simultaneous monitoring to a separate channel on the back-end equipment.



## Extended tilting angle up to 85°

The wider tilt angle allows you to monitor areas that have not seen on conventional cameras. Extended tilting angle helps eliminating blind spots.





MEMO

MEMO