

TECHNICAL INFORMATION
FROM
MARINE SATELLITE COMMUNICATIONS GROUP

Subject : Information on new software SYS01.61 release for improvement of rollover occurring in the internal GPS receiver.

Equipment : JUE-250, Inmarsat FB250

Date : July 8, 2020

Issue Number : SC-0004-20



M. Akatsuka
Manager & Group Leader
Marine Satellite Communications Group
Marine Electronics Engineering Department
Marine System Division

Priority [] A: Carry out immediately
[X] B: Carry out at periodical inspection
[] C: Carry out upon client's request
[] D: Information and news

1. Subject

Information on new software SYS01.61 release for improvement of rollover occurring in the internal GPS receiver.

2. Objective Equipment

JUE-250 BDEs except for attached "JUE-250 BDE serial numbers updated to SYS01.61".

3. Information and Notice

3.1. Information

- (1) Please be informed that new software SYS01.61 release for improvement of rollover that occurs in the internal GPS receiver on May 15, 2022. Make sure to update to the software at periodical inspection.

The following issues will be caused by the rollover:

- The date information in JUE-250 and the date recorded in variety of logs will go back 1024 weeks.
- Communication failure will occur due to registration processing failure to the Inmarsat network.

- (2) The new software SYS01.61 has improved the following functions:

- (a) Improved the issue that the date information in JUE-250 will go back 1024 weeks and communication failure will occur due to rollover that occurs in internal GPS receiver on May 15, 2022.
- (b) Improved the phenomenon that JUE-250 BDE may receive the satellite carrier unintended during JUE-250 satellite searching or while the status of JUE-250 is in "SEARCH NG".
- (c) Improved the phenomenon that when using SYS01.54, the DHCP count value (the number of IP addresses assigned by JUE-250) is always maximum value (254 - "BASE IP" + 1) even if user has changed it.
- (d) Improved the phenomenon that when using SYS01.54, Packet Detect Activate function always returns to disabled even if user has changed it to enabled.
- (e) Improved the phenomenon that when using the SIM card locked by PIN code, JUE-250 repeats satellite search (the terminal status repeats "SAT SEARCH" and "REGISTERING") under the following conditions:
 - When user enters the wrong PIN code at startup
 - When user leaves without entering the PIN code at startup
 - When JUE-250 starts satellite search

- (f) Added the fail-safe function when internal GPS receiver outputs invalid information.
- (g) Improved the phenomenon that JUE-250 may display the wrong date or time when the status of internal GPS receiver is “UNFIX” or “COLD START”.
- (h) Improved the phenomenon that “GPS Status” in Unit Info may show “2D FIX” or “3D FIX”, even though JUE-250 cannot get valid GPS information and the status of JUE-250 is “POSITION?”.

3.2. Request for updating the software

Before updating JUE-250 software and JRC Launcher V2, please read through the following procedure and notice:

- (1) Update the software by using “JUE-250_01.61.exe”.
 - (2) Replace the JRC Launcher software with V2.0.5.0 by using “JRCLauncherV2_2.0.5.0.zip”.
- Download the new JUE-250 Upgrader, JRC Launcher V2 and release note from the Marine Service Department homepage.
 - Refer to the release note for updating procedure of the software.

Notice

- Before updating software to SYS01.61, write down and record all the settings defined in both “SMS-Setting” and “ADMIN” menu on Handset and/or JRC Launcher. And then, after updating to SYS01.61, restore the settings by referring to those recorded before the update.
- Service type of TEL2 port will change to “Voice” setting after updating to SYS01.61 from SYS01.04-01.22. Confirm and set service type of TEL2 port properly according to the connected equipment (telephone or facsimile) after this update.
- Make sure to use JRC Launcher V2.0.5.0 for SYS01.61.

4. Document attached

- JUE-250 SYS01.61 release note (7ZPSC0697)
- JUE-250 Software Version List
- JUE-250 BDE serial numbers updated to SYS01.61

5. Related Service-news and/or Technical Information

- FSN110006: Default service type setting of TEL2 port is set as “Voice” form SYS01.27

JRC FB 250 terminal JUE-250 new software ver. 01.61 release

JRC has released new software version: SYS01.61 for Fleet Broadband JUE-250 mobile terminals.
Please make sure to use JRC Launcher V2.0.5.0 with new SYS01.61.

Important Notice

Please make sure to update to the software SYS01.61 before rollover occurs in the internal GPS receiver on May 15, 2022. The following issues will be caused by the rollover:

- The date information in JUE-250 and the date recorded in variety of logs will go back 1024 weeks.
- Communication failure will occur due to registration processing failure to the Inmarsat network.

Notes for software update

- Before updating software to SYS01.61, write down and record all the settings defined in both “SMS-Setting” and “ADMIN” menu on Handset and/or JRC Launcher (Please use the setting list from page 19). After updating to SYS01.61, restore the settings by referring to those recorded before the update.
- Service type of TEL2 port will change to “Voice” setting after updating to SYS01.61 from SYS01.04-01.22. Confirm and set service type of TEL2 port properly according to the connected equipment (telephone or facsimile) after this update.
- Make sure to use JRC Launcher V2.0.5.0 for SYS01.61.

Changes from SYS01.54 to SYS01.61

Following items have been improved:

- Improved the issue that the date information in JUE-250 will go back 1024 weeks and communication failure will occur due to rollover that occurs in internal GPS receiver on May 15, 2022.
- Improved the phenomenon that JUE-250 BDE may receive the satellite carrier unintended during JUE-250 satellite searching or while the status of JUE-250 is in “SEARCH NG”.
- Improved the phenomenon that when using SYS01.54, the DHCP count value (the number of IP addresses assigned by JUE-250) is always maximum value (254 - “BASE IP” + 1) even if user has changed it.

- Improved the phenomenon that when using SYS01.54, Packet Detect Activate function always returns to disabled even if user has changed it to enabled.
- Improved the phenomenon that when using the SIM card locked by PIN code, JUE-250 repeats satellite search (the terminal status repeats "SAT SEARCH" and "REGISTERING") under the following conditions:
 - When user enters the wrong PIN code at startup
 - When user leaves without entering the PIN code at startup
 - When JUE-250 starts satellite search
- Added the fail-safe function when internal GPS receiver outputs invalid information.
- Improved the phenomenon that JUE-250 may display the wrong date or time when the status of internal GPS receiver is "UNFIX" or "COLD START".
- Improved the phenomenon that "GPS Status" in Unit Info may show "2D FIX" or "3D FIX", even though JUE-250 cannot get valid GPS information and the status of JUE-250 is "POSITION?".

Software updating procedure

Update JUE-250 software with following procedure a) to d).

* Do not connect any router or other equipment when updating JUE-250. Also, PC must be on the same network as JUE-250.

a) Confirm the connection

JUE-250 software updating is executed by a PC with dedicated application for PC.

Prepare a PC and connect it to your JUE-250. (For details, refer “[1. Confirm the connection](#)”)

* Windows XP/Vista/7/10 OS is required.

b) Download the latest software for JUE-250

Confirm the website to check whether the latest software is uploaded or not, from the PC connected to Internet. Download if the latest software is uploaded. (For details, refer “[2. Download the software for JUE-250](#)”)

c) Update JUE-250 software

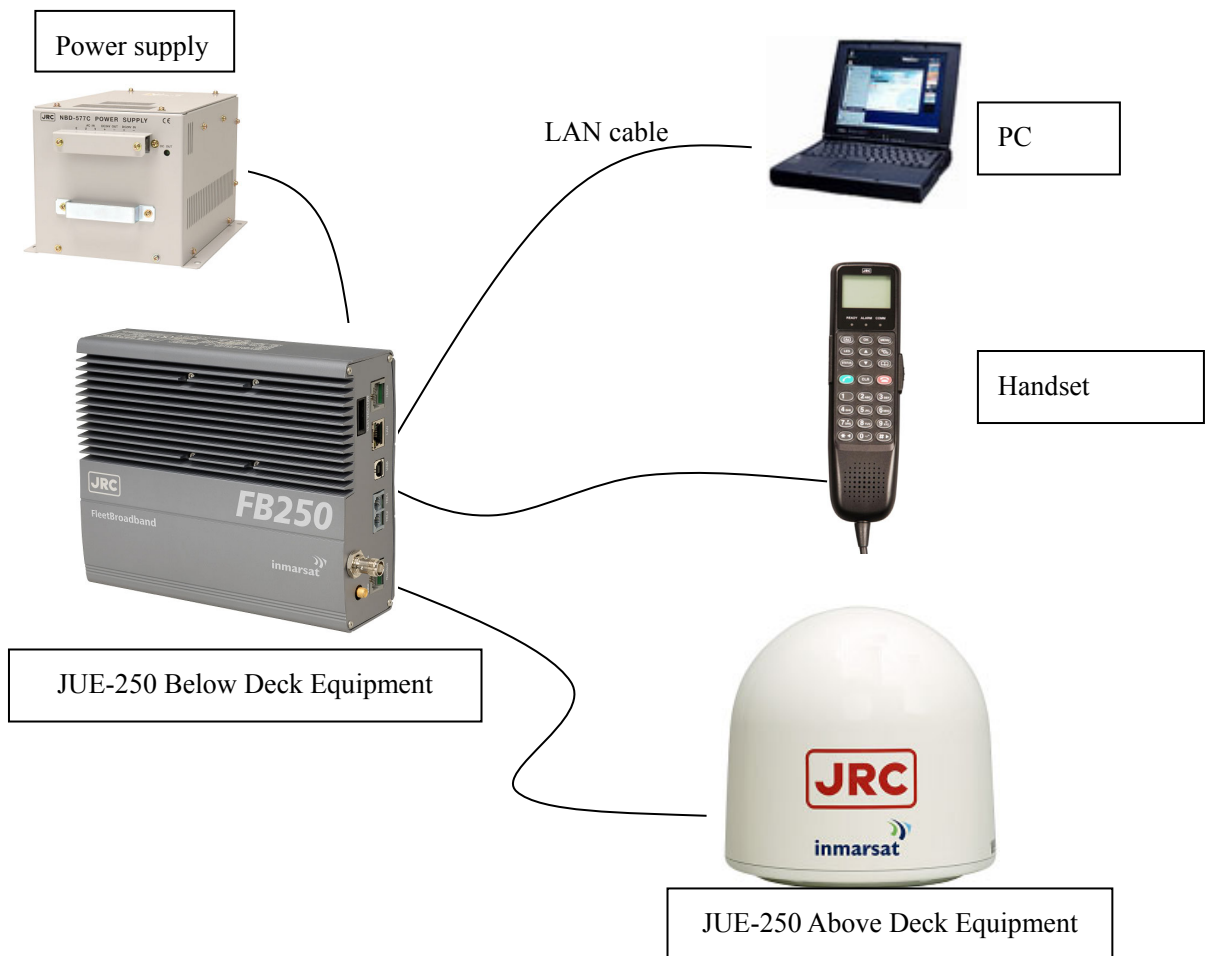
Update the JUE-250 software by the downloaded software. (For details, refer “[3. Update JUE-250 software](#)”)

d) Confirm the updated software version

Confirm the software version after updating, to check that JUE-250 software is correctly updated or not. (For details, refer “[4. Confirm the updated software version](#)”)


1. Confirm the connection

- (1). Prepare a PC and connect it directly to Ethernet port of JUE-250, with LAN straight cable. * Do not connect any router or other equipment between JUE-250 and a PC when updating JUE-250. Also, PC must be on the same network as JUE-250.

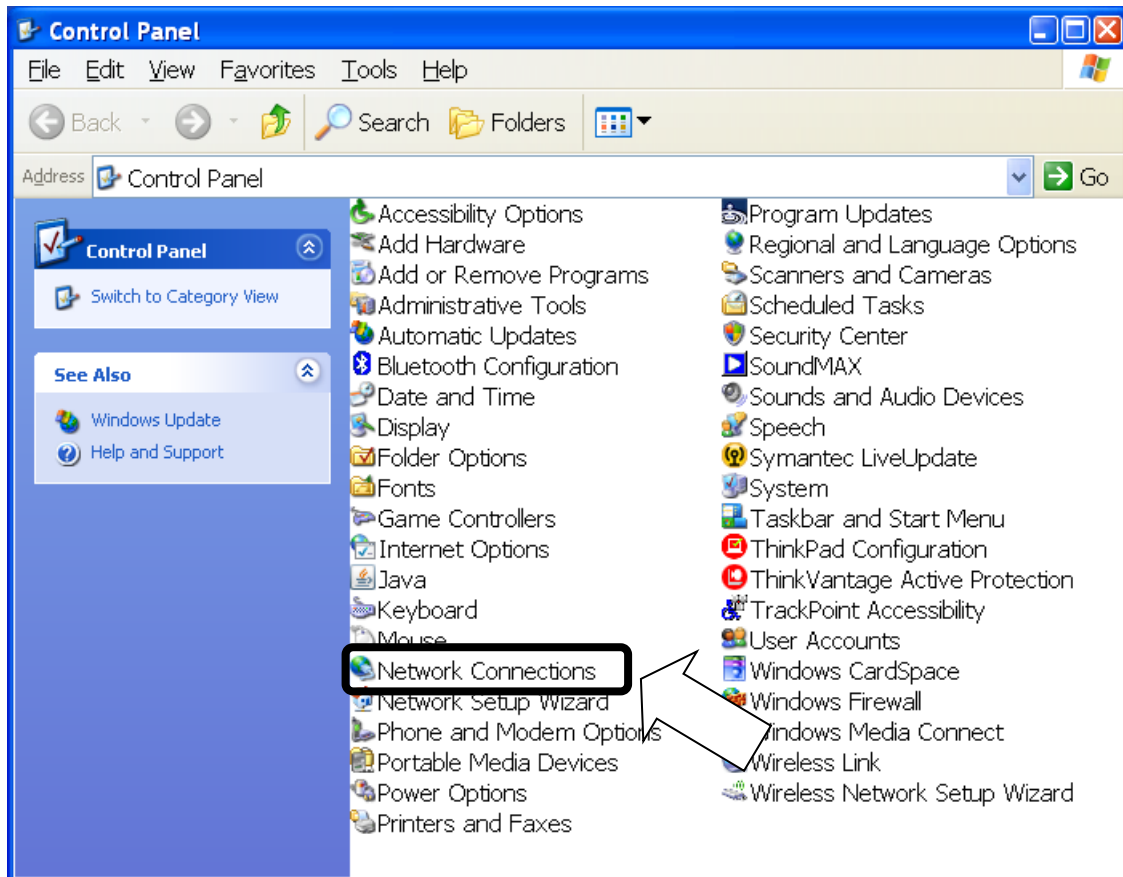


- (2). Set the LAN port IP address (being connected to Ethernet port of JUE-250) of your PC, to be on the same network as JUE-250 by the following procedure.

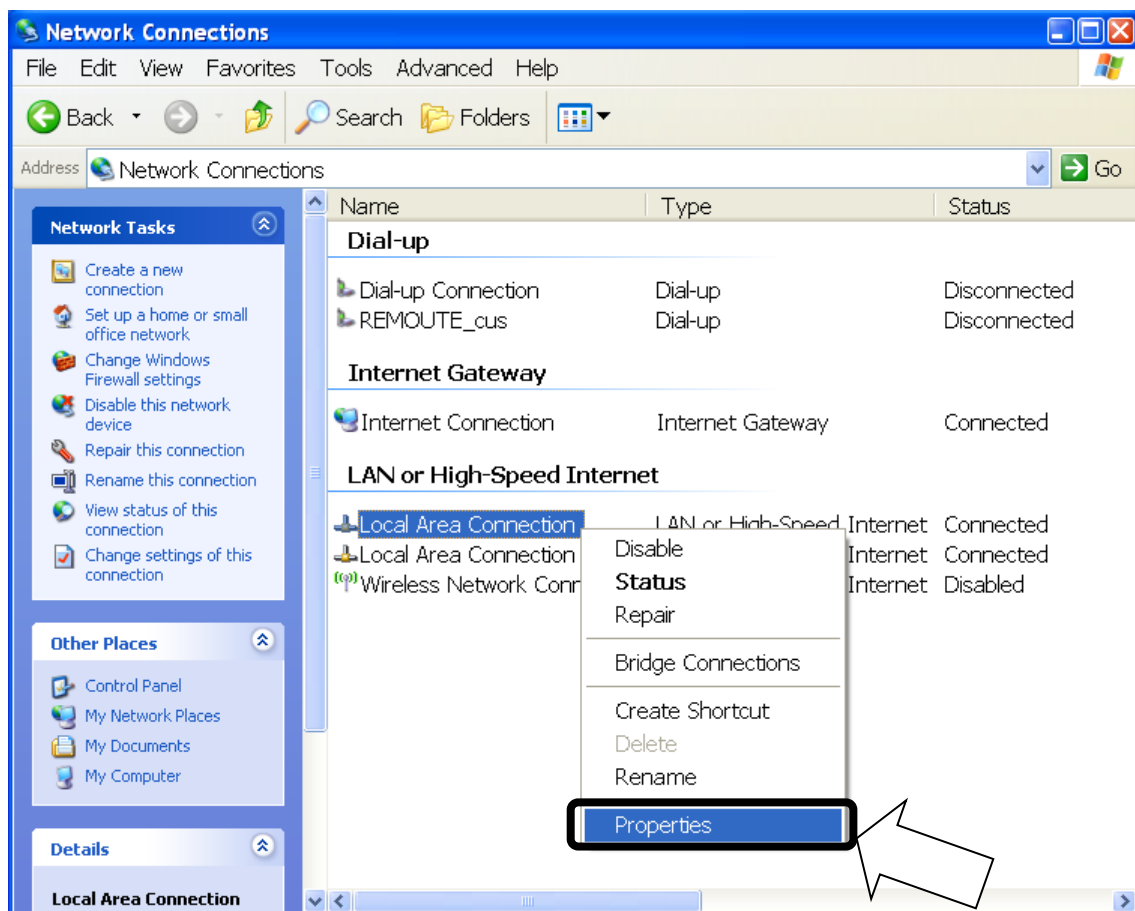
NOTE

- Skip this procedure when you already set the LAN port to DHCP (set the IP address setting as [Obtain an IP address automatically]) and BDE's DHCP setting enable.
- Current BDE's DHCP setting can be referred at the Handset menu, <9> ADMIN - Input secret code (default value 0001) - <3> Port - <3> Ethernet - BDE's IP address (press OK) - BDE's subnet mask (press OK) - DHCP setting. Press  on hook button and close the menu after you confirm the DHCP setting.

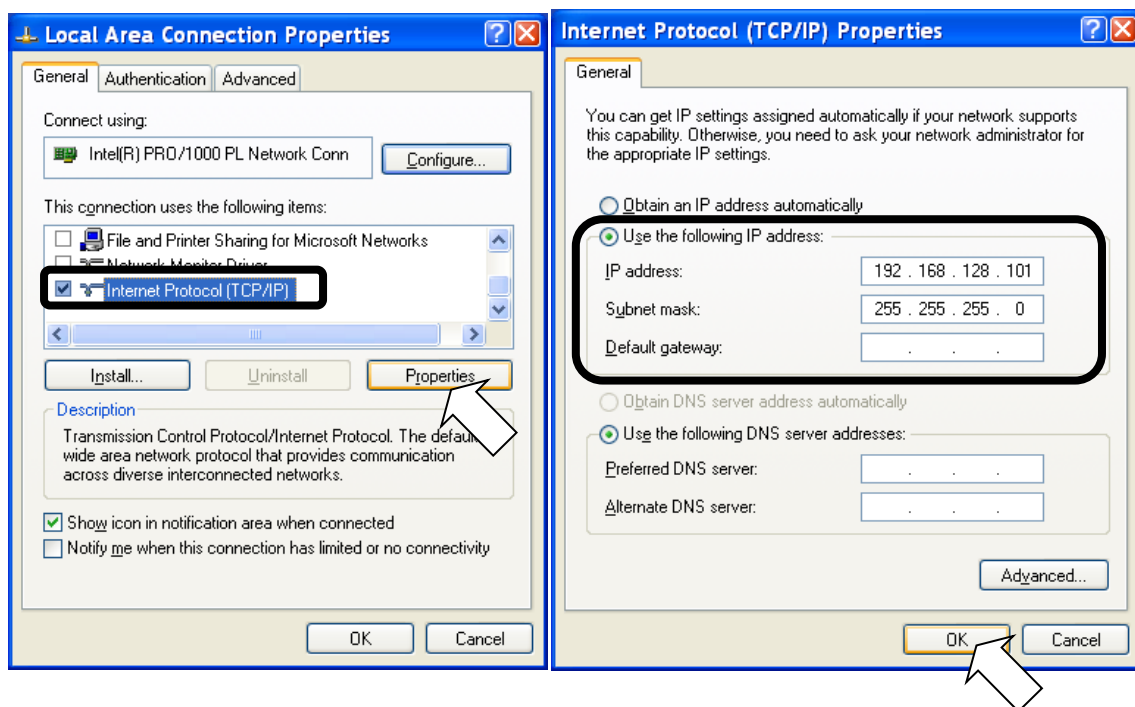
- Confirm BDE's IP address from the Handset.
 - BDE's DHCP setting can be referred at the Handset menu, <9> ADMIN - Input secret code (default value 0001) - <3> Port - <3> Ethernet.
- Select [start]-[Control Panel].
 - [Control Panel] window is displayed.



- iii). Double click [Network Connections].
 - [Network Connections] window is displayed.
- iv). Select [Local Area Connection] and right-click, then click [Properties] from displayed menu.
 - [Local Area Connection Properties] dialogue box is displayed.
 - Confirm that [General] tab is displayed on the front of the screen.



- v). Select [Internet Protocol (TCP/IP)] and click [Properties] button.
 - [Internet Protocol (TCP/IP) Properties] dialogue box is displayed.
 - Select [Use the following IP address] and input [IP address] and [Subnet mask] to be on the same network as JUE-500. Do not input any IP address for [Default gateway].
 - e.g. When the BDE's IP address is 192.168.128.100
 - Input 192.168.128.101 for [IP address] and 255.255.255.0 for [Subnet mask].
- Select [Use the following DNS server addresses] and do not input any DNS addresses for [Preferred DNS server] and [Alternate DNS server].



- vi). Click [OK] button.
 - Screen is returned to [Local Area Connection Properties] dialogue box.
- vii). Click [OK] button.
 - If message of rebooting is displayed, reboot a PC.

2. Download the latest software for JUE-250

The latest software of JUE-250 is uploaded on the HP of Inmarsat.

The URLs are as follows:

- Inmarsat
<https://www.inmarsat.com/support/fleetbroadband-firmware/>

If the software's version on the HP is later than the JUE-250's software version, download the software from HP.

Software version of JUE-250 main unit can be displayed on Handset screen with following operation:

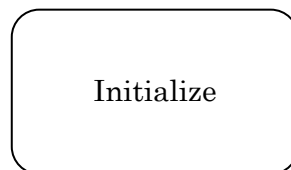
<1> Status - <5> Unit Info - <2> Mainte No.- SYS

3. Update JUE-250 software

Note

- Do not turn OFF the power supply of JUE-250 and/or PC during the software forwarding or updating
- Software forwarding or updating takes up to 20 minutes.

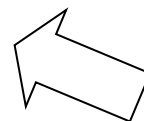
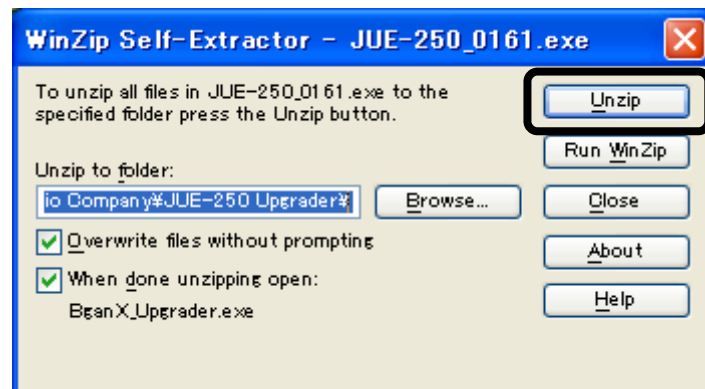
1. Activate your JUE-250 and confirm that initialization is completed.
* [Initialize] is displayed during initialization on the Handset screen.



2. Execute the downloaded software file [JUE-250_0XXX.exe]. Double click the icon.



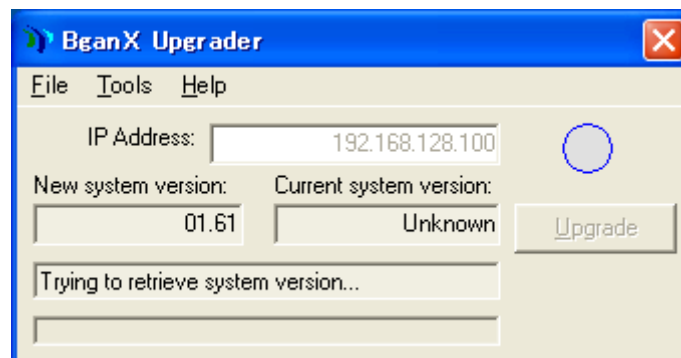
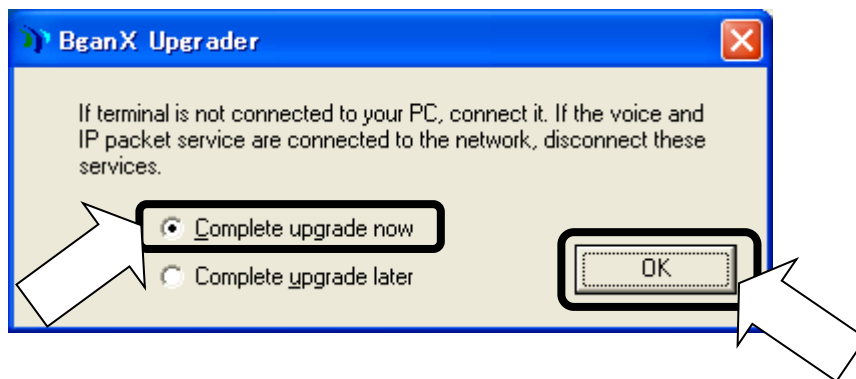
3. Following dialog box is displayed. Click [Unzip] button.
Default unzip folder is C:\Program Files\Japan Radio Company\JUE-250 Upgrader\.



4. Following dialog box is displayed. Click [OK] button.



5. Select [Complete upgrade now] and click [OK] button. [BganX Upgrader] is activated.



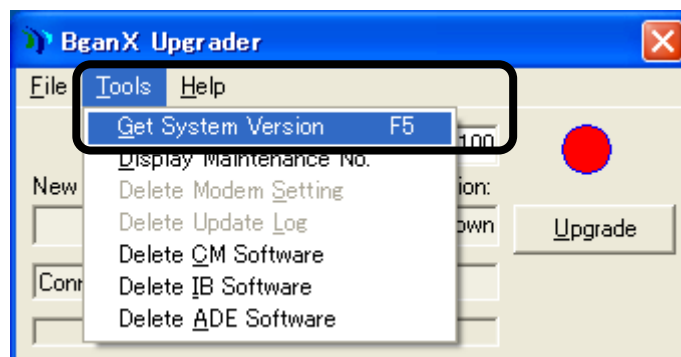
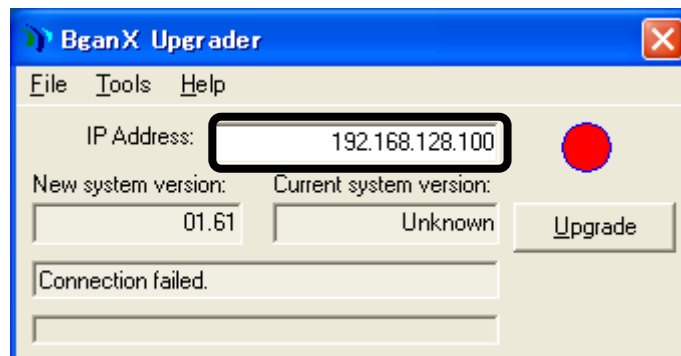
5.1. If the PC cannot connect with BDE

If your PC cannot connect with BDE, below screen is displayed.



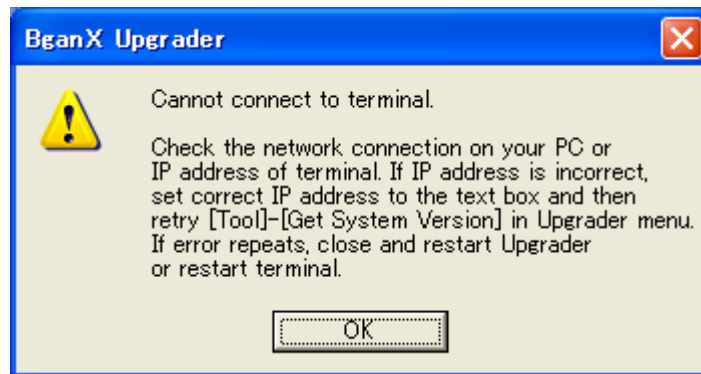
In this case, assume the cause is that BDE's IP address has been changed.

Set the current BDE's IP address into the textbox which displays below IP address, and then select [Tool] – [Get System Version] from Window's menu. Current BDE' IP address can be referred at the Handset menu, <9> ADMIN - Input secret code (default value 0001) - <3> Port - <3> Ethernet.



5.2. If the PC cannot still connect with BDE after the BDE IP confirmation

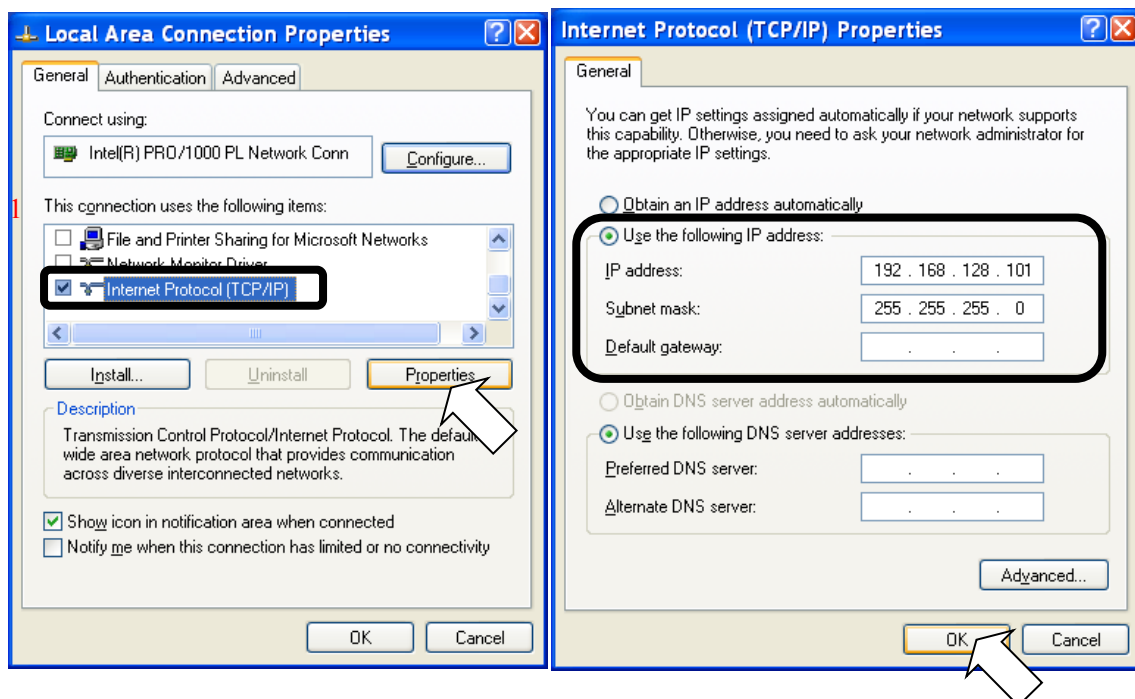
If your PC cannot connect with BDE after the BDE IP confirmation, below screen is displayed.



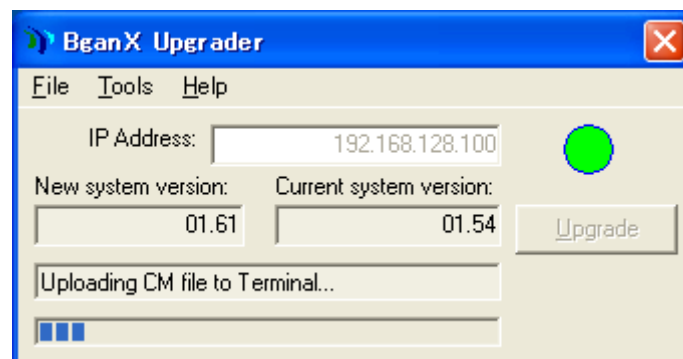
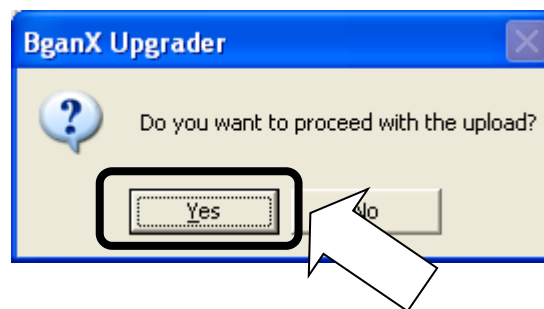
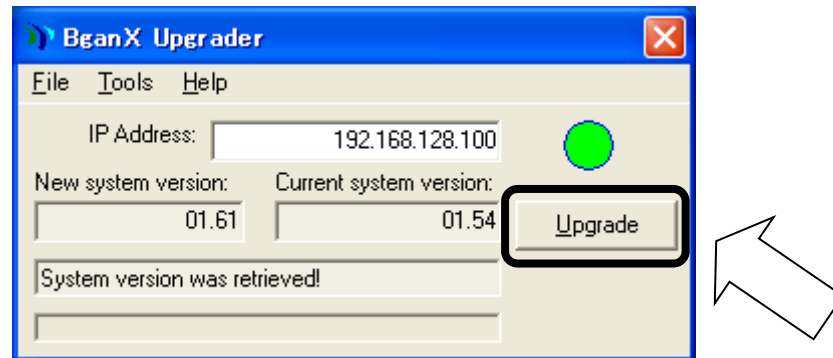
In this case, assume the cause is a changed PC's IP address.

Confirm the PC's IP address is set to be on the same network as the BDE. Refer to "1. Confirm the connection" step (2) to confirm PC's IP address setting.

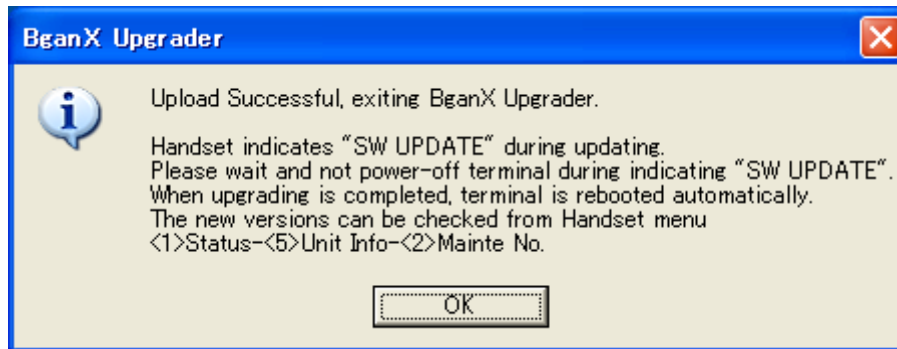
e.g. When the BDE's IP address is 192.168.128.100



6. [Upgrade] button turns to active when installation is ready. Click [Upgrade] button. After that, click [Yes] button in confirmation window. Forwarding of the file is started.



7. Following dialog box is displayed when file forwarding is completed. JUE-250 reboots automatically after several tens of seconds, and starts software updating.
Click [OK] button to close this dialog box.



8. [SW UPDATE] is displayed on the Handset screen during software updating.

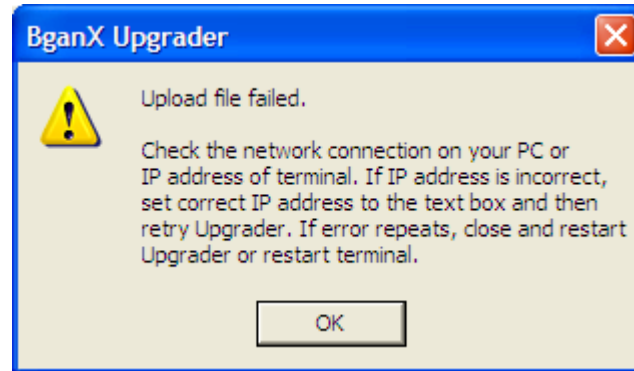


9. JUE-250 reboots when software updating is successfully completed.

9.1. When software update has failed

Update has failed when following phenomenon is generated.

- A) [Upload file failed] dialog box is displayed on the PC.



- B) [BDE Update Error] or [ADE Update Error] is displayed on the Handset screen.

BDE Update
Error X

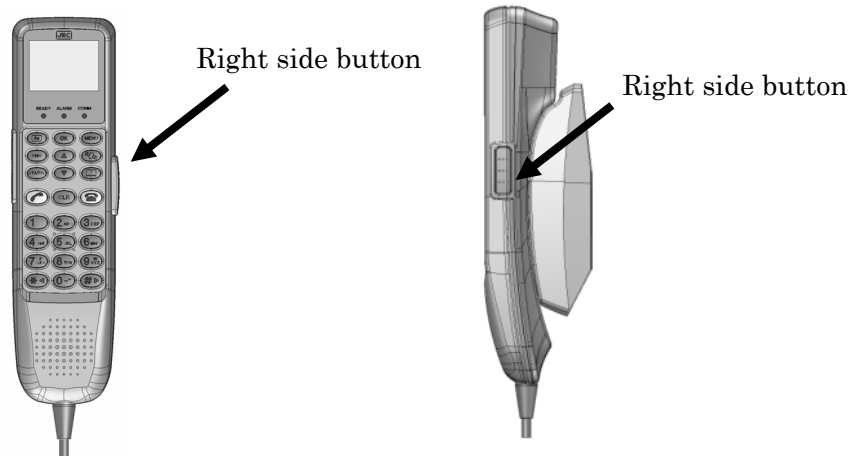
ADE Update
Error X

- C) Although the software is transferred and JUE-250 rebooted, updating is not completed even after 20 minutes or more since its start.

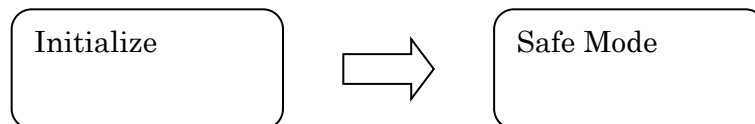
To recover from the above phenomenon, update again with referring to [Recovery procedure when software update has failed] (next page).

9.2. Recovery procedure when software update has failed

- A) Turn OFF the power supply of JUE-250.
- B) Quit [JUE-250 Upgrader], if it is still active.
- C) Turn ON the power supply of JUE-250 with pressing the right side button of the Handset.



- D) Release your finger from the right side button of the Handset when Ready LED of main unit starts to blink.
- E) Confirm the Handset screen transition, it displays [Initialize] and then [Safe Mode].

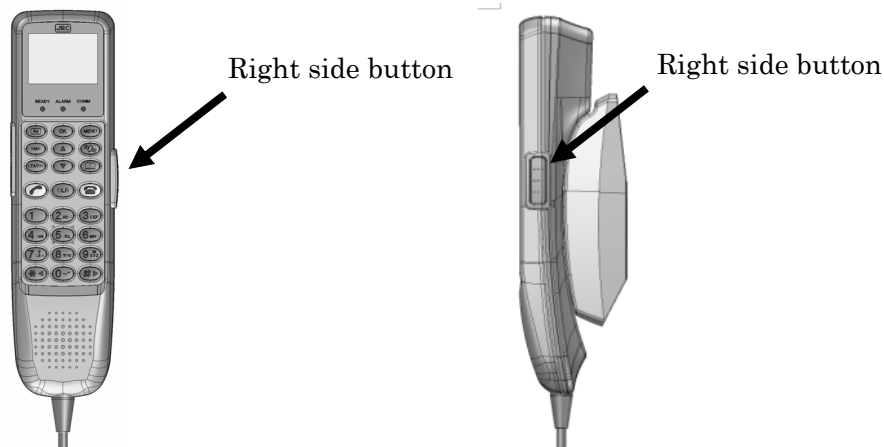


- F) Repeat from the step 2 of [3 . Update JUE-250 software].

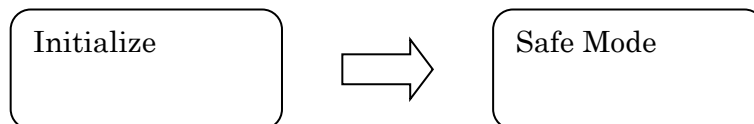
9.3. Software downgrading procedure

If you have any problems caused by upgrading, you can downgrade the software.

- A) Turn OFF the power supply of JUE-250.
- B) Quit [JUE-250 Upgrader], if it is still activating.
- C) Turn ON the power supply of JUE-250 by pressing the right side button of the Handset.



- D) Release your finger from the right side button of the Handset when Ready LED of main unit starts to blink.
- E) Confirm the Handset screen transition, it displays [Initialize] and [Safe Mode].



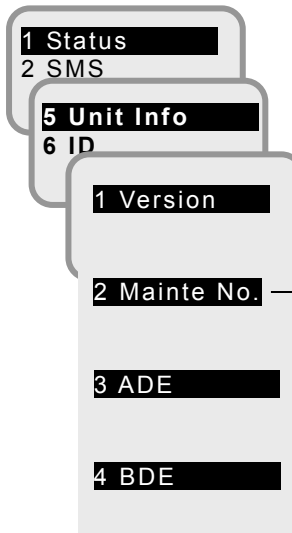
- F) Repeat from the step 2 of [3 . Update JUE-250 software]. Use [JUE-250_0xxx.exe] in CD-ROM of JUE-250 to execute, instead of the downloaded file [JUE-250_0xxx.exe].

4. Confirm the updated software version

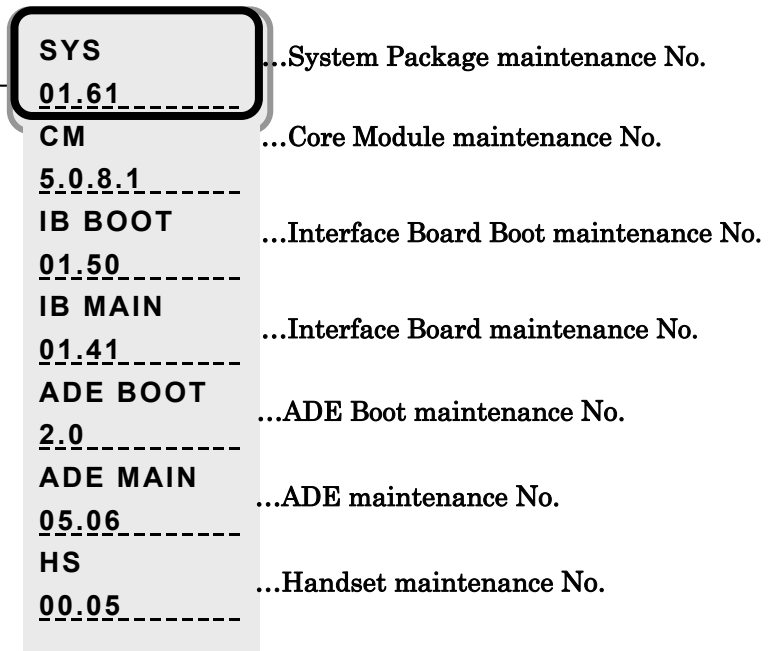
Check that the software version is correctly updated or not, from the following the Handset menu,
<1> Status - <5> Unit Info - <2> Mainte No. - SYS

When the update is succeeded, SYS No. is changed to the same number as the [0xxx] of the software file [JUE-250_0xxx.exe]

Unit Info menu screen



2.Mainte No. display screen



Setting List

Item	Default	Setting
SMS Service Center Address (SCA)	00870772001799	
SMS Validity	1 Day	
SMS Class	3	
SMS Send Status Report	OFF	
SMS Send Character Code	GSM7	
SMS Signature	OFF	
Delivery date	2007/01/01	
Time differences from UTC	+00:00	
Main unit LED ON/OFF	ON	
Selection of satellite tracking method	AUTO	
Use of Secret code for a call from Handset port	OFF	
Use of Secret code for a call from TEL1 port	OFF	
Use of Secret code for a call from TEL2 port	OFF	
Volume level of Handset port	NORMAL	
Volume level of TEL1 port	NORMAL	
Volume level of TEL2 port	NORMAL	
COMM TYPE of TEL1 port	VOICE	
COMM TYPE of TEL2 port	VOICE	
Call Request of Handset port	ON	
Call Request of TEL1 port	ON	
Call Request of TEL2 port	ON	
Call Reception of Handset port	ON	
Call Reception of TEL1 port	ON	
Call Reception of TEL2 port	ON	
Voice-MSN of ISDN	1	
Audio-MSN of ISDN	2	
Backlight dimmer of Handset	3	
Brightness of Handset LED lamps	3	
Ringer pattern of Handset	1	
Ringer volume of Handset	2	
Voice volume of Handset	2	
ON/OFF of key click sound of Handset	ON	
IP Address	192.168.128.100	
SUBNET MASK	255.255.255.0	
DHCP ON/OFF	ON (YES)	
Minimum allocation IP address for DHCP	192.168.128.101	
Total amount of allocatable IP address number	154	

Item		Default	Setting
USER REGISTRATION No.1	USER	ADMIN	
USER REGISTRATION No.1	CODE	0001	
USER REGISTRATION No.1	STANDARD	MANUAL	
USER REGISTRATION No.1	STREAMING	MANUAL	
USER REGISTRATION No.1	Single/Multi	SINGLE	
USER REGISTRATION No.2	USER	(empty)	
USER REGISTRATION No.2	CODE	(empty)	
USER REGISTRATION No.2	STANDARD	MANUAL	
USER REGISTRATION No.2	STREAMING	MANUAL	
USER REGISTRATION No.2	Single/Multi	SINGLE	
USER REGISTRATION No.3	USER	(empty)	
USER REGISTRATION No.3	CODE	(empty)	
USER REGISTRATION No.3	STANDARD	MANUAL	
USER REGISTRATION No.3	STREAMING	MANUAL	
USER REGISTRATION No.3	Single/Multi	SINGLE	
USER REGISTRATION No.4	USER	(empty)	
USER REGISTRATION No.4	CODE	(empty)	
USER REGISTRATION No.4	STANDARD	MANUAL	
USER REGISTRATION No.4	STREAMING	MANUAL	
USER REGISTRATION No.4	Single/Multi	SINGLE	
USER REGISTRATION No.5	USER	(empty)	
USER REGISTRATION No.5	CODE	(empty)	
USER REGISTRATION No.5	STANDARD	MANUAL	
USER REGISTRATION No.5	STREAMING	MANUAL	
USER REGISTRATION No.5	Single/Multi	SINGLE	
USER REGISTRATION No.6	USER	(empty)	
USER REGISTRATION No.6	CODE	(empty)	
USER REGISTRATION No.6	STANDARD	MANUAL	
USER REGISTRATION No.6	STREAMING	MANUAL	
USER REGISTRATION No.6	Single/Multi	SINGLE	
USER REGISTRATION No.7	USER	(empty)	
USER REGISTRATION No.7	CODE	(empty)	
USER REGISTRATION No.7	STANDARD	MANUAL	
USER REGISTRATION No.7	STREAMING	MANUAL	
USER REGISTRATION No.7	Single/Multi	SINGLE	
USER REGISTRATION No.8	USER	(empty)	
USER REGISTRATION No.8	CODE	(empty)	
USER REGISTRATION No.8	STANDARD	MANUAL	
USER REGISTRATION No.8	STREAMING	MANUAL	
USER REGISTRATION No.8	Single/Multi	SINGLE	
USER REGISTRATION No.9	USER	(empty)	
USER REGISTRATION No.9	CODE	(empty)	
USER REGISTRATION No.9	STANDARD	MANUAL	
USER REGISTRATION No.9	STREAMING	MANUAL	
USER REGISTRATION No.9	Single/Multi	SINGLE	

Item	Default	Setting
USER REGISTRATION No.10 USER	(empty)	
USER REGISTRATION No.10 CODE	(empty)	
USER REGISTRATION No.10 STANDARD	MANUAL	
USER REGISTRATION No.10 STREAMING	MANUAL	
USER REGISTRATION No.10 Single/Multi	SINGLE	
USER REGISTRATION No.11 USER	(empty)	
USER REGISTRATION No.11 CODE	(empty)	
USER REGISTRATION No.11 STANDARD	MANUAL	
USER REGISTRATION No.11 STREAMING	MANUAL	
USER REGISTRATION No.11 Single/Multi	SINGLE	
USER REGISTRATION No.12 USER	(empty)	
USER REGISTRATION No.12 CODE	(empty)	
USER REGISTRATION No.12 STANDARD	MANUAL	
USER REGISTRATION No.12 STREAMING	MANUAL	
USER REGISTRATION No.12 Single/Multi	SINGLE	
USER REGISTRATION No.13 USER	(empty)	
USER REGISTRATION No.13 CODE	(empty)	
USER REGISTRATION No.13 STANDARD	MANUAL	
USER REGISTRATION No.13 STREAMING	MANUAL	
USER REGISTRATION No.13 Single/Multi	SINGLE	
USER REGISTRATION No.14 USER	(empty)	
USER REGISTRATION No.14 CODE	(empty)	
USER REGISTRATION No.14 STANDARD	MANUAL	
USER REGISTRATION No.14 STREAMING	MANUAL	
USER REGISTRATION No.14 Single/Multi	SINGLE	
USER REGISTRATION No.15 USER	(empty)	
USER REGISTRATION No.15 CODE	(empty)	
USER REGISTRATION No.15 STANDARD	MANUAL	
USER REGISTRATION No.15 STREAMING	MANUAL	
USER REGISTRATION No.15 Single/Multi	SINGLE	
USER REGISTRATION No.16 USER	(empty)	
USER REGISTRATION No.16 CODE	(empty)	
USER REGISTRATION No.16 STANDARD	MANUAL	
USER REGISTRATION No.16 STREAMING	MANUAL	
USER REGISTRATION No.16 Single/Multi	SINGLE	
USER REGISTRATION No.17 USER	(empty)	
USER REGISTRATION No.17 CODE	(empty)	
USER REGISTRATION No.17 STANDARD	MANUAL	
USER REGISTRATION No.17 STREAMING	MANUAL	
USER REGISTRATION No.17 Single/Multi	SINGLE	
USER REGISTRATION No.18 USER	(empty)	
USER REGISTRATION No.18 CODE	(empty)	
USER REGISTRATION No.18 STANDARD	MANUAL	
USER REGISTRATION No.18 STREAMING	MANUAL	
USER REGISTRATION No.18 Single/Multi	SINGLE	
USER REGISTRATION No.19 USER	(empty)	
USER REGISTRATION No.19 CODE	(empty)	
USER REGISTRATION No.19 STANDARD	MANUAL	
USER REGISTRATION No.19 STREAMING	MANUAL	
USER REGISTRATION No.19 Single/Multi	SINGLE	

Item	Default	Setting
USER REGISTRATION No.20 USER	(empty)	
USER REGISTRATION No.20 CODE	(empty)	
USER REGISTRATION No.20 STANDARD	MANUAL	
USER REGISTRATION No.20 STREAMING	MANUAL	
USER REGISTRATION No.20 Single/Multi	SINGLE	
USER REGISTRATION No.21 USER	(empty)	
USER REGISTRATION No.21 CODE	(empty)	
USER REGISTRATION No.21 STANDARD	MANUAL	
USER REGISTRATION No.22 STREAMING	MANUAL	
USER REGISTRATION No.22 Single/Multi	SINGLE	
USER REGISTRATION No.22 USER	(empty)	
USER REGISTRATION No.22 CODE	(empty)	
USER REGISTRATION No.22 STANDARD	MANUAL	
USER REGISTRATION No.22 STREAMING	MANUAL	
USER REGISTRATION No.22 Single/Multi	SINGLE	
USER REGISTRATION No.23 USER	(empty)	
USER REGISTRATION No.23 CODE	(empty)	
USER REGISTRATION No.23 STANDARD	MANUAL	
USER REGISTRATION No.23 STREAMING	MANUAL	
USER REGISTRATION No.23 Single/Multi	SINGLE	
USER REGISTRATION No.21 USER	(empty)	
USER REGISTRATION No.24 CODE	(empty)	
USER REGISTRATION No.24 STANDARD	MANUAL	
USER REGISTRATION No.24 STREAMING	MANUAL	
USER REGISTRATION No.24 Single/Multi	SINGLE	
USER REGISTRATION No.25 USER	(empty)	
USER REGISTRATION No.25 CODE	(empty)	
USER REGISTRATION No.25 STANDARD	MANUAL	
USER REGISTRATION No.25 STREAMING	MANUAL	
USER REGISTRATION No.25 Single/Multi	SINGLE	
USER REGISTRATION No.26 USER	(empty)	
USER REGISTRATION No.26 CODE	(empty)	
USER REGISTRATION No.26 STANDARD	MANUAL	
USER REGISTRATION No.26 STREAMING	MANUAL	
USER REGISTRATION No.26 Single/Multi	SINGLE	
USER REGISTRATION No.27 USER	(empty)	
USER REGISTRATION No.27 CODE	(empty)	
USER REGISTRATION No.27 STANDARD	MANUAL	
USER REGISTRATION No.27 STREAMING	MANUAL	
USER REGISTRATION No.27 Single/Multi	SINGLE	
USER REGISTRATION No.28 USER	(empty)	
USER REGISTRATION No.28 CODE	(empty)	
USER REGISTRATION No.28 STANDARD	MANUAL	
USER REGISTRATION No.28 STREAMING	MANUAL	
USER REGISTRATION No.28 Single/Multi	SINGLE	
USER REGISTRATION No.29 USER	(empty)	
USER REGISTRATION No.29 CODE	(empty)	
USER REGISTRATION No.29 STANDARD	MANUAL	
USER REGISTRATION No.29 STREAMING	MANUAL	
USER REGISTRATION No.29 Single/Multi	SINGLE	

Item	Default	Setting
USER REGISTRATION No.30 USER	(empty)	
USER REGISTRATION No.30 CODE	(empty)	
USER REGISTRATION No.30 STANDARD	MANUAL	
USER REGISTRATION No.30 STREAMING	MANUAL	
USER REGISTRATION No.30 Single/Multi	SINGLE	
USER REGISTRATION No.31 USER	(empty)	
USER REGISTRATION No.31 CODE	(empty)	
USER REGISTRATION No.31 STANDARD	MANUAL	
USER REGISTRATION No.31 STREAMING	MANUAL	
USER REGISTRATION No.31 Single/Multi	SINGLE	
USER REGISTRATION No.32 USER	(empty)	
USER REGISTRATION No.32 CODE	(empty)	
USER REGISTRATION No.32 STANDARD	MANUAL	
USER REGISTRATION No.32 STREAMING	MANUAL	
USER REGISTRATION No.32 Single/Multi	SINGLE	
USER REGISTRATION No.33 USER	(empty)	
USER REGISTRATION No.33 CODE	(empty)	
USER REGISTRATION No.33 STANDARD	MANUAL	
USER REGISTRATION No.33 STREAMING	MANUAL	
USER REGISTRATION No.33 Single/Multi	SINGLE	
USER REGISTRATION No.34 USER	(empty)	
USER REGISTRATION No.34 CODE	(empty)	
USER REGISTRATION No.34 STANDARD	MANUAL	
USER REGISTRATION No.34 STREAMING	MANUAL	
USER REGISTRATION No.34 Single/Multi	SINGLE	
USER REGISTRATION No.35 USER	(empty)	
USER REGISTRATION No.35 CODE	(empty)	
USER REGISTRATION No.35 STANDARD	MANUAL	
USER REGISTRATION No.35 STREAMING	MANUAL	
USER REGISTRATION No.35 Single/Multi	SINGLE	
USER REGISTRATION No.36 USER	(empty)	
USER REGISTRATION No.36 CODE	(empty)	
USER REGISTRATION No.36 STANDARD	MANUAL	
USER REGISTRATION No.36 STREAMING	MANUAL	
USER REGISTRATION No.36 Single/Multi	SINGLE	
USER REGISTRATION No.37 USER	(empty)	
USER REGISTRATION No.37 CODE	(empty)	
USER REGISTRATION No.37 STANDARD	MANUAL	
USER REGISTRATION No.37 STREAMING	MANUAL	
USER REGISTRATION No.37 Single/Multi	SINGLE	
USER REGISTRATION No.38 USER	(empty)	
USER REGISTRATION No.38 CODE	(empty)	
USER REGISTRATION No.38 STANDARD	MANUAL	
USER REGISTRATION No.38 STREAMING	MANUAL	
USER REGISTRATION No.38 Single/Multi	SINGLE	
USER REGISTRATION No.39 USER	(empty)	
USER REGISTRATION No.39 CODE	(empty)	
USER REGISTRATION No.39 STANDARD	MANUAL	
USER REGISTRATION No.39 STREAMING	MANUAL	
USER REGISTRATION No.39 Single/Multi	SINGLE	

Item	Default	Setting
USER REGISTRATION No.40 USER	(empty)	
USER REGISTRATION No.40 CODE	(empty)	
USER REGISTRATION No.40 STANDARD	MANUAL	
USER REGISTRATION No.40 STREAMING	MANUAL	
USER REGISTRATION No.40 Single/Multi	SINGLE	
USER REGISTRATION No.41 USER	(empty)	
USER REGISTRATION No.41 CODE	(empty)	
USER REGISTRATION No.41 STANDARD	MANUAL	
USER REGISTRATION No.41 STREAMING	MANUAL	
USER REGISTRATION No.41 Single/Multi	SINGLE	
USER REGISTRATION No.42 USER	(empty)	
USER REGISTRATION No.42 CODE	(empty)	
USER REGISTRATION No.42 STANDARD	MANUAL	
USER REGISTRATION No.42 STREAMING	MANUAL	
USER REGISTRATION No.42 Single/Multi	SINGLE	
USER REGISTRATION No.43 USER	(empty)	
USER REGISTRATION No.43 CODE	(empty)	
USER REGISTRATION No.43 STANDARD	MANUAL	
USER REGISTRATION No.43 STREAMING	MANUAL	
USER REGISTRATION No.43 Single/Multi	SINGLE	
USER REGISTRATION No.44 USER	(empty)	
USER REGISTRATION No.44 CODE	(empty)	
USER REGISTRATION No.44 STANDARD	MANUAL	
USER REGISTRATION No.44 STREAMING	MANUAL	
USER REGISTRATION No.44 Single/Multi	SINGLE	
USER REGISTRATION No.45 USER	(empty)	
USER REGISTRATION No.45 CODE	(empty)	
USER REGISTRATION No.45 STANDARD	MANUAL	
USER REGISTRATION No.45 STREAMING	MANUAL	
USER REGISTRATION No.45 Single/Multi	SINGLE	
USER REGISTRATION No.46 USER	(empty)	
USER REGISTRATION No.46 CODE	(empty)	
USER REGISTRATION No.46 STANDARD	MANUAL	
USER REGISTRATION No.46 STREAMING	MANUAL	
USER REGISTRATION No.46 Single/Multi	SINGLE	
USER REGISTRATION No.47 USER	(empty)	
USER REGISTRATION No.47 CODE	(empty)	
USER REGISTRATION No.47 STANDARD	MANUAL	
USER REGISTRATION No.47 STREAMING	MANUAL	
USER REGISTRATION No.47 Single/Multi	SINGLE	
USER REGISTRATION No.48 USER	(empty)	
USER REGISTRATION No.48 CODE	(empty)	
USER REGISTRATION No.48 STANDARD	MANUAL	
USER REGISTRATION No.48 STREAMING	MANUAL	
USER REGISTRATION No.48 Single/Multi	SINGLE	
USER REGISTRATION No.49 USER	(empty)	
USER REGISTRATION No.49 CODE	(empty)	
USER REGISTRATION No.49 STANDARD	MANUAL	
USER REGISTRATION No.49 STREAMING	MANUAL	
USER REGISTRATION No.49 Single/Multi	SINGLE	
USER REGISTRATION No.50 USER	(empty)	
USER REGISTRATION No.50 CODE	(empty)	
USER REGISTRATION No.50 STANDARD	MANUAL	
USER REGISTRATION No.50 STREAMING	MANUAL	
USER REGISTRATION No.50 Single/Multi	SINGLE	

Item	Default	Setting
Maximum connecting time of Handset port (Auto DCN.)	0 (unlimited)	
Maximum connecting time of TEL1 port (Auto DCN.)	0 (unlimited)	
Maximum connecting time of TEL2 port (Auto DCN.)	0 (unlimited)	
Maximum connecting time of ISDN port (Auto DCN.)	0 (unlimited)	
Maximum connecting time of STREAMING communication port (USB/Ethernet)(Auto DCN.)	0 (unlimited)	
Maximum Idle connecting time of STANDARD communication port (USB/Ethernet)(Auto DCN.)	OFF (unlimited)	
APN Profile Profile 1 Name	Profile 1	
APN Profile Profile 1 APN setting	SIM default	
APN Profile Profile 1 APN	(empty)	
APN Profile Profile 1 User	(empty)	
APN Profile Profile 1 Pass	(empty)	
APN Profile Profile 1 Global IP setting	Dynamic	
APN Profile Profile 1 Global IP address	(empty)	
APN Profile Profile 2 Name	Profile 2	
APN Profile Profile 2 APN setting	SIM default	
APN Profile Profile 2 APN	(empty)	
APN Profile Profile 2 User	(empty)	
APN Profile Profile 2 Pass	(empty)	
APN Profile Profile 2 Global IP setting	Dynamic	
APN Profile Profile 2 Global IP address	(empty)	
APN Profile Profile 3 Name	Profile 3	
APN Profile Profile 3 APN setting	SIM default	
APN Profile Profile 3 APN	(empty)	
APN Profile Profile 3 User	(empty)	
APN Profile Profile 3 Pass	(empty)	
APN Profile Profile 3 Global IP setting	Dynamic	
APN Profile Profile 3 Global IP address	(empty)	
APN Profile Profile 4 Name	Profile 4	
APN Profile Profile 4 APN setting	SIM default	
APN Profile Profile 4 APN	(empty)	
APN Profile Profile 4 User	(empty)	
APN Profile Profile 4 Pass	(empty)	
APN Profile Profile 4 Global IP setting	Dynamic	
APN Profile Profile 4 Global IP address	(empty)	
APN Profile Profile 5 Name	Profile 5	
APN Profile Profile 5 APN setting	SIM default	
APN Profile Profile 5 APN	(empty)	
APN Profile Profile 5 User	(empty)	
APN Profile Profile 5 Pass	(empty)	
APN Profile Profile 5 Global IP setting	Dynamic	
APN Profile Profile 5 Global IP address	(empty)	

Item		Default	Setting
Packet Filter No.1	Priority	(empty)	
Packet Filter No.1	Action	Pass	
Packet Filter No.1	Direction	Outgoing	
Packet Filter No.1	Protocol	ALL	
Packet Filter No.1	Destination IP	(empty)	
Packet Filter No.1	Destination Port range	(empty)	
Packet Filter No.1	Source IP	(empty)	
Packet Filter No.1	Source Port range	(empty)	
Packet Filter No.2	Priority	(empty)	
Packet Filter No.2	Action	Pass	
Packet Filter No.2	Direction	Outgoing	
Packet Filter No.2	Protocol	ALL	
Packet Filter No.2	Destination IP	(empty)	
Packet Filter No.2	Destination Port range	(empty)	
Packet Filter No.2	Source IP	(empty)	
Packet Filter No.2	Source Port range	(empty)	
Packet Filter No.3	Priority	(empty)	
Packet Filter No.3	Action	Pass	
Packet Filter No.3	Direction	Outgoing	
Packet Filter No.3	Protocol	ALL	
Packet Filter No.3	Destination IP	(empty)	
Packet Filter No.3	Destination Port range	(empty)	
Packet Filter No.3	Source IP	(empty)	
Packet Filter No.3	Source Port range	(empty)	
Packet Filter No.4	Priority	(empty)	
Packet Filter No.4	Action	Pass	
Packet Filter No.4	Direction	Outgoing	
Packet Filter No.4	Protocol	ALL	
Packet Filter No.4	Destination IP	(empty)	
Packet Filter No.4	Destination Port range	(empty)	
Packet Filter No.4	Source IP	(empty)	
Packet Filter No.4	Source Port range	(empty)	
Packet Filter No.5	Priority	(empty)	
Packet Filter No.5	Action	Pass	
Packet Filter No.5	Direction	Outgoing	
Packet Filter No.5	Protocol	ALL	
Packet Filter No.5	Destination IP	(empty)	
Packet Filter No.5	Destination Port range	(empty)	
Packet Filter No.5	Source IP	(empty)	
Packet Filter No.5	Source Port range	(empty)	
Packet Filter No.6	Priority	(empty)	
Packet Filter No.6	Action	Pass	
Packet Filter No.6	Direction	Outgoing	
Packet Filter No.6	Protocol	ALL	
Packet Filter No.6	Destination IP	(empty)	
Packet Filter No.6	Destination Port range	(empty)	
Packet Filter No.6	Source IP	(empty)	
Packet Filter No.6	Source Port range	(empty)	
Packet Filter No.7	Priority	(empty)	
Packet Filter No.7	Action	Pass	
Packet Filter No.7	Direction	Outgoing	
Packet Filter No.7	Protocol	ALL	
Packet Filter No.7	Destination IP	(empty)	
Packet Filter No.7	Destination Port range	(empty)	
Packet Filter No.7	Source IP	(empty)	
Packet Filter No.7	Source Port range	(empty)	

Item	Default	Setting
Packet Filter No.8 Priority	(empty)	
Packet Filter No.8 Action	Pass	
Packet Filter No.8 Direction	Outgoing	
Packet Filter No.8 Protocol	ALL	
Packet Filter No.8 Destination IP	(empty)	
Packet Filter No.8 Destination Port range	(empty)	
Packet Filter No.8 Source IP	(empty)	
Packet Filter No.8 Source Port range	(empty)	
Packet Filter No.9 Priority	(empty)	
Packet Filter No.9 Action	Pass	
Packet Filter No.9 Direction	Outgoing	
Packet Filter No.9 Protocol	ALL	
Packet Filter No.9 Destination IP	(empty)	
Packet Filter No.9 Destination Port range	(empty)	
Packet Filter No.9 Source IP	(empty)	
Packet Filter No.9 Source Port range	(empty)	
Packet Filter No.10 Priority	(empty)	
Packet Filter No.10 Action	Pass	
Packet Filter No.10 Direction	Outgoing	
Packet Filter No.10 Protocol	ALL	
Packet Filter No.10 Destination IP	(empty)	
Packet Filter No.10 Destination Port range	(empty)	
Packet Filter No.10 Source IP	(empty)	
Packet Filter No.10 Source Port range	(empty)	
Packet Filter No.11 Priority	(empty)	
Packet Filter No.11 Action	Pass	
Packet Filter No.11 Direction	Outgoing	
Packet Filter No.11 Protocol	ALL	
Packet Filter No.11 Destination IP	(empty)	
Packet Filter No.11 Destination Port range	(empty)	
Packet Filter No.11 Source IP	(empty)	
Packet Filter No.11 Source Port range	(empty)	
Packet Filter No.12 Priority	(empty)	
Packet Filter No.12 Action	Pass	
Packet Filter No.12 Direction	Outgoing	
Packet Filter No.12 Protocol	ALL	
Packet Filter No.12 Destination IP	(empty)	
Packet Filter No.12 Destination Port range	(empty)	
Packet Filter No.12 Source IP	(empty)	
Packet Filter No.12 Source Port range	(empty)	
Packet Filter No.13 Priority	(empty)	
Packet Filter No.13 Action	Pass	
Packet Filter No.13 Direction	Outgoing	
Packet Filter No.13 Protocol	ALL	
Packet Filter No.13 Destination IP	(empty)	
Packet Filter No.13 Destination Port range	(empty)	
Packet Filter No.13 Source IP	(empty)	
Packet Filter No.13 Source Port range	(empty)	
Packet Filter No.14 Priority	(empty)	
Packet Filter No.14 Action	Pass	
Packet Filter No.14 Direction	Outgoing	
Packet Filter No.14 Protocol	ALL	
Packet Filter No.14 Destination IP	(empty)	
Packet Filter No.14 Destination Port range	(empty)	
Packet Filter No.14 Source IP	(empty)	
Packet Filter No.14 Source Port range	(empty)	

Item		Default	Setting
Packet Filter No.15	Priority	(empty)	
Packet Filter No.15	Action	Pass	
Packet Filter No.15	Direction	Outgoing	
Packet Filter No.15	Protocol	ALL	
Packet Filter No.15	Destination IP	(empty)	
Packet Filter No.15	Destination Port range	(empty)	
Packet Filter No.15	Source IP	(empty)	
Packet Filter No.15	Source Port range	(empty)	
Packet Filter No.16	Priority	(empty)	
Packet Filter No.16	Action	Pass	
Packet Filter No.16	Direction	Outgoing	
Packet Filter No.16	Protocol	ALL	
Packet Filter No.16	Destination IP	(empty)	
Packet Filter No.16	Destination Port range	(empty)	
Packet Filter No.16	Source IP	(empty)	
Packet Filter No.16	Source Port range	(empty)	
Packet Filter No.17	Priority	(empty)	
Packet Filter No.17	Action	Pass	
Packet Filter No.17	Direction	Outgoing	
Packet Filter No.17	Protocol	ALL	
Packet Filter No.17	Destination IP	(empty)	
Packet Filter No.17	Destination Port range	(empty)	
Packet Filter No.17	Source IP	(empty)	
Packet Filter No.17	Source Port range	(empty)	
Packet Filter No.18	Priority	(empty)	
Packet Filter No.18	Action	Pass	
Packet Filter No.18	Direction	Outgoing	
Packet Filter No.18	Protocol	ALL	
Packet Filter No.18	Destination IP	(empty)	
Packet Filter No.18	Destination Port range	(empty)	
Packet Filter No.18	Source IP	(empty)	
Packet Filter No.18	Source Port range	(empty)	
Packet Filter No.19	Priority	(empty)	
Packet Filter No.19	Action	Pass	
Packet Filter No.19	Direction	Outgoing	
Packet Filter No.19	Protocol	ALL	
Packet Filter No.19	Destination IP	(empty)	
Packet Filter No.19	Destination Port range	(empty)	
Packet Filter No.19	Source IP	(empty)	
Packet Filter No.19	Source Port range	(empty)	
Packet Filter No.20	Priority	(empty)	
Packet Filter No.20	Action	Pass	
Packet Filter No.20	Direction	Outgoing	
Packet Filter No.20	Protocol	ALL	
Packet Filter No.20	Destination IP	(empty)	
Packet Filter No.20	Destination Port range	(empty)	
Packet Filter No.20	Source IP	(empty)	
Packet Filter No.20	Source Port range	(empty)	

Item		Default	Setting
Packet detection activate No.1	Disable / Enable	Disable (unchecked)	
Packet detection activate No.1	Base IP	192.168.128.101	
Packet detection activate No.1	Count	1	
Packet detection activate No.1	Profile	Profile 1	
Packet detection activate No.2	Disable / Enable	Disable (unchecked)	
Packet detection activate No.2	Base IP	192.168.128.101	
Packet detection activate No.2	Count	1	
Packet detection activate No.2	Profile	Profile 1	
Packet detection activate No.3	Disable / Enable	Disable (unchecked)	
Packet detection activate No.3	Base IP	192.168.128.101	
Packet detection activate No.3	Count	1	
Packet detection activate No.3	Profile	Profile 1	
Packet detection activate No.4	Disable / Enable	Disable (unchecked)	
Packet detection activate No.4	Base IP	192.168.128.101	
Packet detection activate No.4	Count	1	
Packet detection activate No.4	Profile	Profile 1	
Packet detection activate No.5	Disable / Enable	Disable (unchecked)	
Packet detection activate No.5	Base IP	192.168.128.101	
Packet detection activate No.5	Count	1	
Packet detection activate No.5	Profile	Profile 1	
Packet detection activate No.6	Disable / Enable	Disable (unchecked)	
Packet detection activate No.6	Base IP	192.168.128.101	
Packet detection activate No.6	Count	1	
Packet detection activate No.6	Profile	Profile 1	
Always activate Setting 1	Profile	Disable	
Always activate Setting 1	Local IP	0.0.0.0	
Always activate Setting 2	Profile	Disable	
Always activate Setting 2	Local IP	0.0.0.0	
Always activate Setting 3	Profile	Disable	
Always activate Setting 4	Local IP	0.0.0.0	

Inmarsat FB250 JUE-250 Software Version List (1/2)

Version No.	SYS Version	Maintenance No.			Modification			
11	01.61	CM		5.0.8.1	(1)Improved the phenomenon that JUE-250 BDE may receive the satellite carrier unintended during JUE-250 satellite searching or while the status of JUE-250 is in "SEARCH NG". (2)Improved the phenomenon that when using SYS01.54, the DHCP count value (the number of IP addresses assigned by JUE-250) is always maximum value (254 - "BASE IP" + 1) even if user has changed it. (3)Improved the phenomenon that when using SYS01.54, Packet Detect Activate function always returns to disabled even if user has changed it to enabled.			
				BOOT	01.50	No change		
		IB	MAIN	01.41	(1)Improved the issue that the date information in JUE-250 will go back 1024 weeks and communication failure will occur due to rollover that occurs in internal GPS receiver on May 15, 2022. (2)Improved the phenomenon that JUE-250 BDE may receive the satellite carrier unintended during JUE-250 satellite searching or while the status of JUE-250 is in "SEARCH NG". (3)Improved the phenomenon that when using the SIM card locked by PIN code, JUE-250 repeats satellite search (the terminal status repeats "SAT SEARCH" and "REGISTERING") under the following conditions: - When user enters the wrong PIN code at startup - When user leaves without entering the PIN code at startup - When JUE-250 starts satellite search (4)Added the fail-safe function when internal GPS receiver outputs invalid information. (5)Improved the phenomenon that JUE-250 may display the wrong date or time when the status of internal GPS receiver is "UNFIX" or "COLD START". (6)Improved the phenomenon that "GPS Status" in Unit Info may show "2D FIX" or "3D FIX", even though JUE-250 cannot get valid GPS information and the status of JUE-250 is "POSITION?".			
		ADE	BOOT	2.0	No change			
			MAIN	-	No change			
10	01.54	CM		5.0.8.0	(1)Supported MEAS (Middle East and Asia) satellite			
		IB	BOOT	01.50	No change			
			MAIN	01.39	(1)Supported MEAS (Middle East and Asia) satellite			
		ADE	BOOT	2.0	No change			
			MAIN	05.06	No change			
9	01.31	CM		5.0.5.1	(1) Improved an issue in which TCP connection becomes impossible in rare case under special conditions			
		IB	BOOT	01.50	No change			
			MAIN	01.35	(1) Added Handset functions for incoming calls			
		ADE	BOOT	2.0	No change			
			MAIN	05.06	No change			
8	01.29	CM		5.0.5.0	(1)Improved a stability of PS communication under heavy load			
		IB	BOOT	01.50	No change			
			MAIN	01.33	(1)Added one more IHSIGACQ retry command: up to 6 IHSIGACQ requests with 2sec interval			
		ADE	BOOT	2.0	No change			
			MAIN	05.06	(1)Improved a satellite tracking on GYRO mode			
7	01.28	CM		5.0.4.4	(1)Improved satellite search failure caused after terminal shutdown failure (2)Supported Inmarsat Service Aware Charging and Control (SACC)			
		IB	BOOT	01.50	No change			
			MAIN	01.32	No change			
		ADE	BOOT	2.0	No change			
			MAIN	05.05	(1)Improved ADE cross EL unusual control failure			
6	01.27	CM		5.0.4.3	(1)Improved unexpected Safe Mode start-up caused by following reasons: Reason1: Software update failure Reason2: Packet counter overflow (2)Improved the usability of JRC Launcher V2 in NAT router connected network. (3)Added "Packet Detection Activate" function.			
			IB	BOOT	01.50	No change		
						MAIN	01.32	(1)Improved the usability of JRC Launcher V2 in NAT router connected network. (2)Added "Always Activate" function. (3)Added "Packet Detection Activate" function. (4)Changed default service type setting of TEL2 port to "Voice" from "FAX". (5)Changed the specification to keep Standard IP Connection at the time when re-satellite search is caused by blockage.
		ADE	BOOT	2.0	No change			
					MAIN			05.03
5	01.26	CM		5.0.4.1	(1)Added auto disconnection function for Standard IP connection. (2)Added packet filtering function. (3)Changed the Ring Back Tone timing for voice/fax originating call. (4)Added function to return the terminal settings to default settings by executing FLASH Clear.			
			IB	BOOT	01.50	No change		
						MAIN	01.30	(1)Added Service Type "BOTH" for receiving both voice and fax call to the same TEL1/2 port. (2)Added function to disable a call from/to Handset, TEL1 or TEL2. (3)Added auto disconnection function for Standard IP connection. (4)Added APN Profile registration function. (5)Added packet filtering function. (6)Added function to disable or restrict PS communication to each user. (7)Added function to return the terminal settings to default settings by executing FLASH Clear.
		ADE	BOOT	2.0	No change			
					MAIN			05.03

Inmarsat FB250 JUE-250 Software Version List (2/2)

Version No.	SYS Version	Maintenance No.		Modification	
4	01.22	CM	5.0.3.7	(1)Added a function to control JRC Launcher V2.	
				(2)Fixed the issue of the temporary decrease of the PIN input limitation number.	
				(3)Fixed the undefined state reply of the AT command: AT+CGACT?	
		IB	BOOT	01.50	No change
			MAIN	01.26	(1)Added a function to control JRC Launcher V2. (2)Fixed the display issue on ISDN menu screen after the AUDIO MSN edit
		ADE	BOOT	2.0	No change
MAIN	05.01		No change		
3	01.19	CM	5.0.3.6	(1)Improved the Narrow beam handover issue.	
				(2)Improved the packet communication failure which occurred under the VoIP system.	
				(3)Improved the filtering of the Traffic Flow Template function.	
				(4)Changed the default value of the DHCP lease timer which will allocate after the PS connection.	
				(5)Support for the change of IP address field to Class A or B private IP address.	
				(6)Support for the change of subnet mask field.	
				(7)Added the DHCP server setting in DHCP allocation range setting function.	
		IB	BOOT	01.50	No change
			MAIN	01.24	(1)Displays the satellite name: AMER, EMEA or APAC on the Handset LCD.
					(2)Added the new symbol on the Handset LCD to indicate out of service area for FAX.
		(3)Support for the change of IP address field to Class A or B private IP address.			
		(4)Support for the change of subnet mask field.			
		(5)Added the DHCP server setting in DHCP allocation range setting function.			
		ADE	BOOT	2.0	No change
MAIN	05.01		No change		
2	01.16	CM	5.0.3.3	(1)Correction of satellite map management for satellite repositioning.	
				(2)Improved the satellite tracking problem that the receiving level is lost in particular area (180W-165W).	
				(3)Support for the USIM PIN function.	
				(4)Improved communications stability in case of blocage by shadowing.	
				(5>User-selectable enable or disable DHCP and configurable IP address.	
				(6)Reduce echo on voice phone call.	
		IB	BOOT	01.50	No change
			MAIN	01.22	(1)User-selectable enable or disable DHCP and configurable IP address.
					(2)Improved FAX communications stability.
					(3)Support for SMS reply function from handset.
					(4)Improved Phone Book function.
		ADE	BOOT	2.0	No change
			MAIN	05.01	(5)Improved the extension number to forward a call to one of the terminal phones.
					(1)Improved the tracking algorithm under the low receiving level condition.
1	01.04		CM	5.0.1.5	Initial release
		IB	BOOT	01.50	Initial release
			MAIN	01.04	Initial release
		ADE	BOOT	2.0	Initial release
			MAIN	01.11	Initial release

JUE-250 BDE serial numbers updated to SYS01.61

JUE-250 BDE (GSC-452-1)

GV91285	GV91315	GV91344
GV91286	GV91316	GV91347
GV91287	GV91317	GV91349
GV91288	GV91318	GV91350
GV91289	GV91319	GV91353
GV91290	GV91320	GV91354
GV91291	GV91321	GV91355
GV91292	GV91322	GV91356
GV91293	GV91323	GV91357
GV91294	GV91324	
GV91295	GV91325	
GV91296	GV91326	
GV91303	GV91327	
GV91308	GV91328	
GV91309	GV91329	
GV91310	GV91330	
GV91311	GV91331	
GV91312	GV91332	
GV91313	GV91333	
GV91314	GV91336	