

TECHNICAL INFORMATION  
FROM  
MARITIME SOLUTION GROUP

Subject : Information on software release (BDE-App version 02.23)

Equipment : JUE-501, Inmarsat FB500  
: JUE-251, Inmarsat FB250

Date : May 31, 2019

Issue Number : SC-0004-19



---

T. Kawabata  
Manager & Group Leader  
Marine Solution Group  
Global Information Engineering Department  
Marine System Division

Priority [   ] A: Carry out immediately  
[ X ] B: Carry out at periodical inspection  
[   ] C: Carry out upon client's request  
[   ] D: Information and news

1. Subject

Information on software release (BDE-App 02.23)

2. Objective Equipment

JUE-501 and JUE-251

Note: The equipment after the following serial number have been already updated to BDE-App 02.23 at the factory:

JUE-501 BDE : GV50581

JUE-251 BDE : GV29650

3. Information and Notice

Please be informed that the new software BDE-App 02.23 adds and improves the following functions.

BDE-App 02.23

• Functions added:

- 1) Added the function to disable AT command, IP phone, IPsec VPN and/or Proxy DNS.  
The function to disable AT command, IP phone, IPsec VPN, and/or Proxy DNS function when the function is never used is added. The TCP/UDP port of the function is closed when the function is disabled. Refer to attached release note for the details of added setting menu.
- 2) Added the function to record access log to JUE-501/JUE-251 Web menu.
- 3) Corresponded to the blocking area display function implemented to JRC MFD.  
The information, the number of bars indicating "signal reception level", is added in sentence for RMS output by JUE-501/JUE- 251 to display the blocking area on JRC MFD.  
Note: New MFD software, Ver. 01.40.0005 (scheduled for end of June 2019) is needed to use the blocking area display function on MFD.

• Functions improved:

- 1) Improved the log-in function to JUE-501/JUE-251 Web menu.  
The following log-in functions to JUE-251/JUE-251 Web menu are improved.
  - Added the function to automatically log out from Web menu if it is not used for certain time is improved. It can set specific time for log out. Refer to attached release note for the details of added setting menu.
  - The cookie information used when logging in to the Web menu is improved.

- 2) Improved the incorrect indication in “WAN Selector” in the Web Dashboard screen.  
Corrected wrong indication that occurs;  
When “Default Route” is set in Web Routing Table screen, JUE-501/JUE-251 indicates “Ext WAN” in “WAN Selector” of Web Dashboard screen incorrectly, even though the “WAN selector” function is disabled.
- 3) Improved the symptom that an incorrect “, (comma)” is added in Alarmpack file.  
Corrected unnecessary “, (comma)” added in front of “BDE-ALM” in Alarmpack file when outputting Alarmpack file with Offset 4 value invalid (displayed as ‘----’) in Web Alarmpack screen.
- 4) Improved the incorrect indication in Handset Call Log screen.  
Corrected wrong indication that occurs;  
When the call log for Standard or Streaming communication is displayed on the Handset-CallLog screen, “Unknown” is indicated instead of blank in the “Term” field.

#### Request for updating the software

Before updating JUE-501 and JUE-251 software, please read through the following procedure and notice:

#### Notice

We recommend making a backup copy of all the setting by using “Export” function on the Web menu.

- Download the new software and release note from the Marine Service Department or JRC/Alphatron Marine (<http://jrc.am/>) homepage.
- Refer to the release note for updating procedure of the software version.
- The software includes ADE software. ADE software is also updated when updating from BDE-App 01.96 or older software version.

#### 4. Document attached

- JUE-501/JUE-251 BDE-App 02.23 release note (7ZPSC0679)
- JUE-501/JUE-251 Software Version List

#### 5. Related Service-news and/or Technical Information

None

## JRC FB500/FB250 terminal JUE-501/JUE-251

### New software version 02.23 release

JRC has released new software version, APP 02.23 for FleetBroadband JUE-501 and JUE-251 mobile terminals.

#### **Changes from APP 02.11 to 02.23**

---

Following functions have been added and improved:

Functions added;

- Added the function to disable AT command, IP phone, IPsec VPN, and/or Proxy DNS.  
The function to disable AT command, IP phone, IPsec VPN, and/or Proxy DNS function when the function is never used is added. The TCP/UDP port for the function is closed when the function is disabled. Refer to p.16 about the added menu for setting the function.
- Added the function to record access log to JUE-501/JUE-251 Web menu.
- Corresponded to the blocking area display function implemented to JRC MFD  
The information, the number of bars indicating “signal reception level”, is added in sentence for RMS output by JUE-501/JUE-251 to display the blocking area on JRC MFD.  
Note: new MFD software, Ver. 01.40.0005 (scheduled for end of June, 2019) is needed to use the blocking area display function on MFD.

Functions improved;

- Improved the log-in function to JUE-501/JUE-251 Web menu  
The following log-in functions to JUE-501/JUE-251 Web menu are improved.
  - Added the function to automatically log out of the Web menu if it is not used for certain time. It can set specific time for log out. Refer to p.20 about the added menu for setting the function.
  - The cookie information used when logging in to the Web menu is improved.
- Improved the incorrect indication in “WAN Selector” in Web Dashboard screen  
Corrected wrong indication that occurs;  
When “Default Route” is set in Web Routing Table screen, JUE-501/JUE-251 indicates “Ext WAN” in “WAN Selector” of Web Dashboard screen incorrectly, even though the “WAN selector” function is disabled.

## **Software updating procedure**

---

Update JUE-501/251 software to APP 02.23 with following procedure a) to d).

\* Do not connect any router or other equipment when updating JUE-501/251. Also, PC must be on the same network as JUE-501/251.

### **a) Confirm the connection**

JUE-501/251 software updating needs a PC.

Prepare a PC and connect it to your JUE-501/251. (For details, refer “[1. Confirm the connection](#)”)

\* Windows XP/Vista/7/10 OS is required.

### **b) Download the latest software for JUE-501/251**

Confirm the website to check whether the latest software is uploaded or not, from the PC connected to Internet. Download if the latest software is uploaded. (For details, refer “[2. Download the software for JUE-501/251](#)”)

### **c) Update/Downgrade JUE-501/251 software**

Update the JUE-501/251 software by the downloaded software. (For details, refer “[3. Update JUE-501/251 software](#)”)

Also, downgrade the JUE-501/251 software by the stored software [JUE251-501\_APP\_XXXX.jrc] in the attached CD-ROM, when necessary. (For details, refer “[\[Reference\] Software downgrading procedure](#)” in last page)

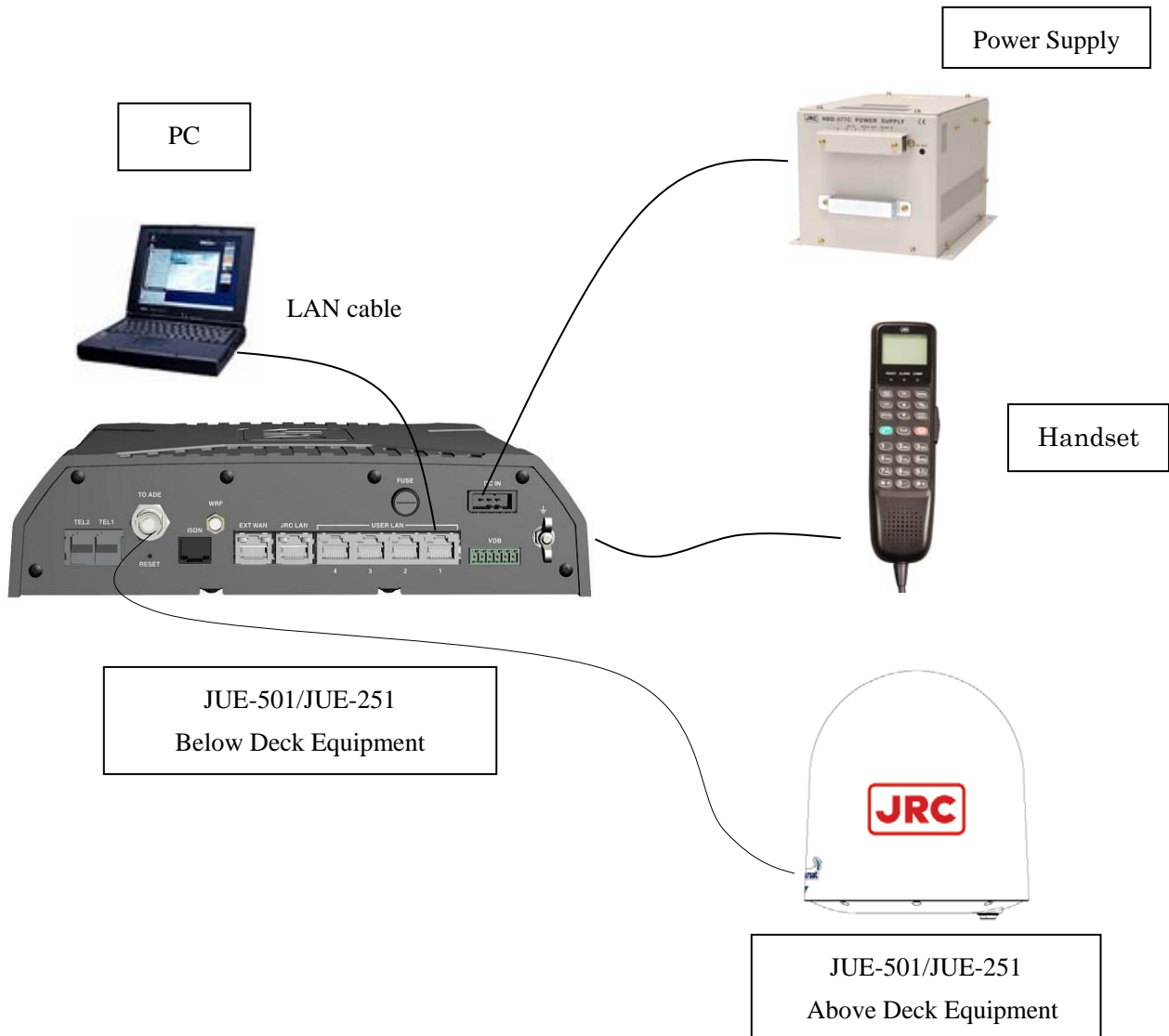
### **d) Confirm the updated software version**

Confirm the software version after updating, to check that JUE-501/251 software is correctly updated or not. (For details, refer “[4. Confirm the updated software version](#)”)

### 1. Confirm the connection


(1) Prepare a PC and connect it directly to a User LAN port of JUE-501/251.


\* Do not connect any router or other equipment between JUE-501/251 and a PC when updating JUE-501/251. Also, PC must be on the same network as JUE-501/251.

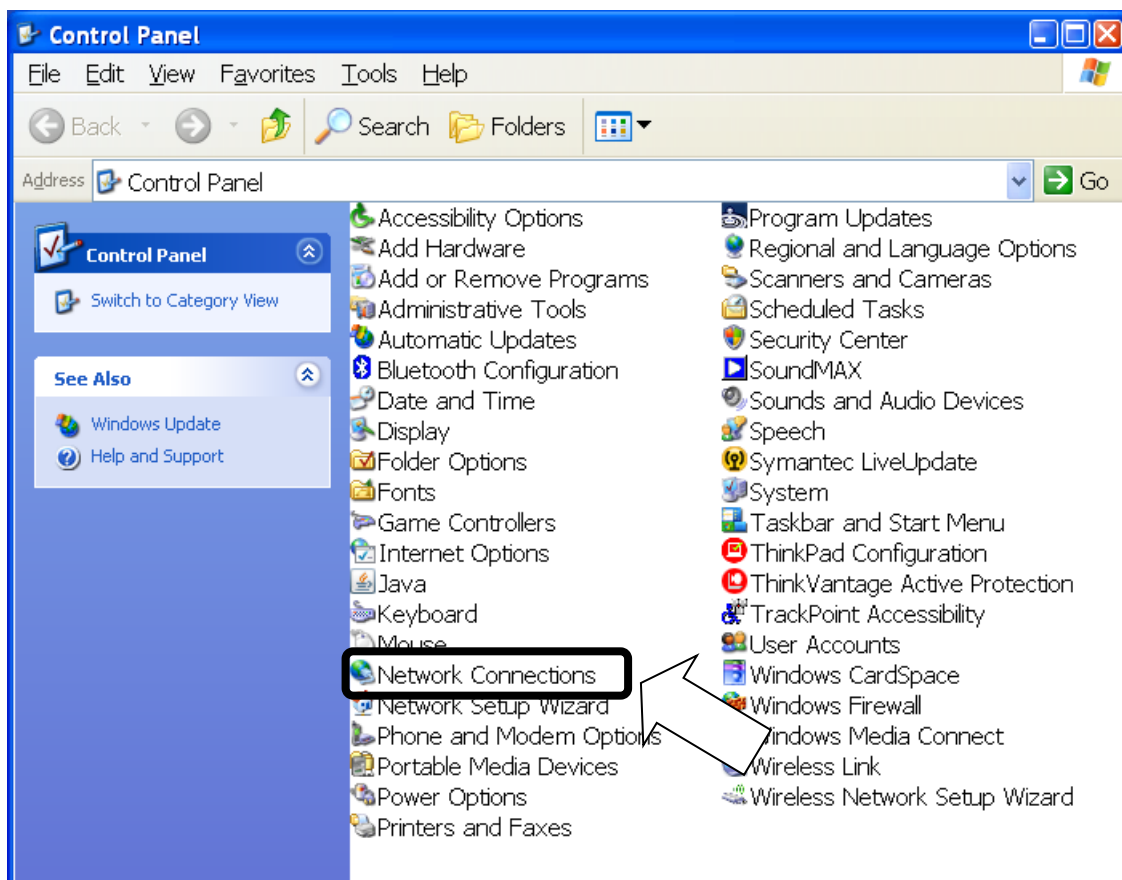


- (2) Set the LAN port IP address (being connected to User LAN port of JUE-501/251) of your PC, to be on the same network as JUE-501/251 by the following procedure.

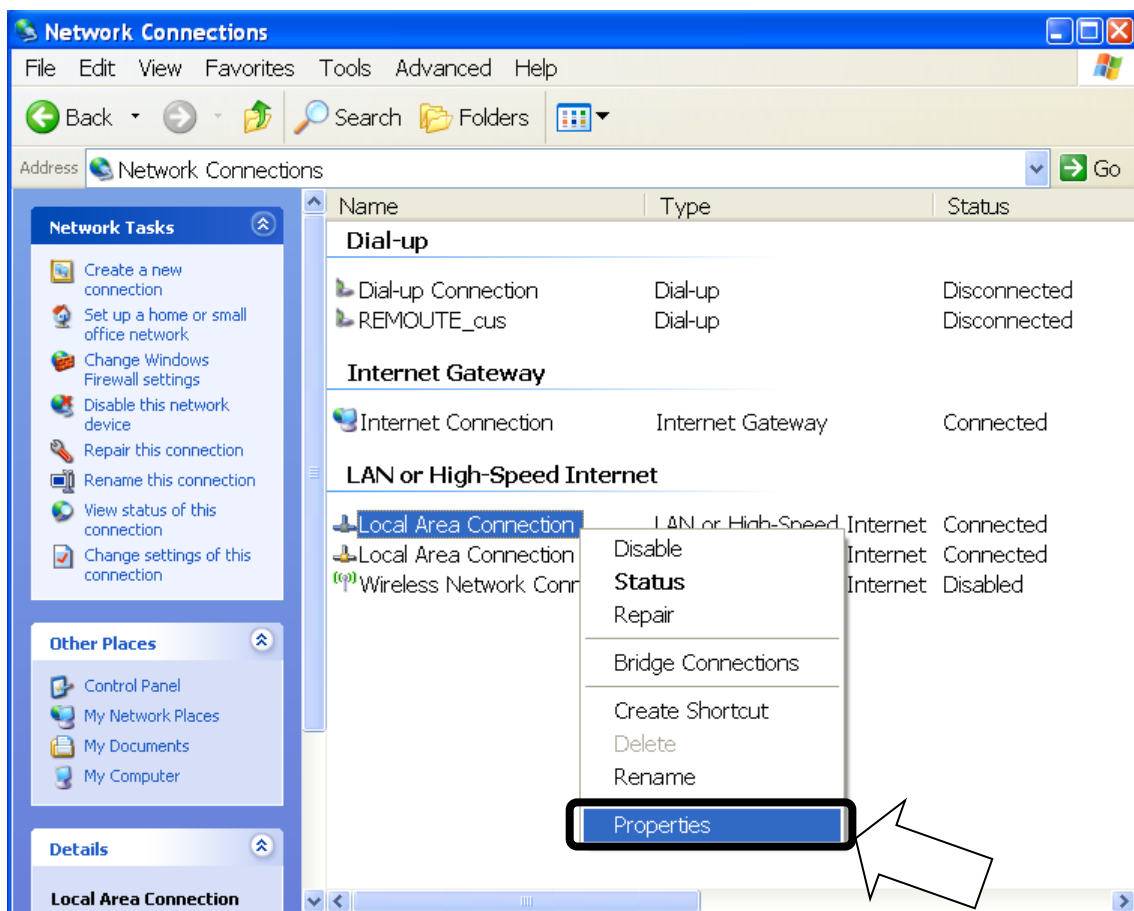
NOTE

- Skip this procedure when you already set the LAN port to DHCP (set the IP address setting as [Obtain an IP address automatically]) and BDE's DHCP setting enable.
- Current BDE's DHCP setting can be referred at the Handset menu, <9> Admin - Input secret code (initial value 0001) - <3> Port - <3> Ethernet - <1> User LAN - BDE's IP address (press OK) - BDE's subnet mask (press OK) - DHCP setting. Press  (on hook) button and close the menu after you confirm the DHCP setting.

- Confirm BDE's IP address from the Handset.
  - BDE's IP Address can be referred at the Handset menu, <9> Admin - Input secret code (initial value 0001) - <3> Port - <3> Ethernet - <1> User LAN. Press  (on hook) button and close the menu after you confirm the IP address.
- Select [start]-[Control Panel] on your PC.
  - [Control Panel] window is displayed.

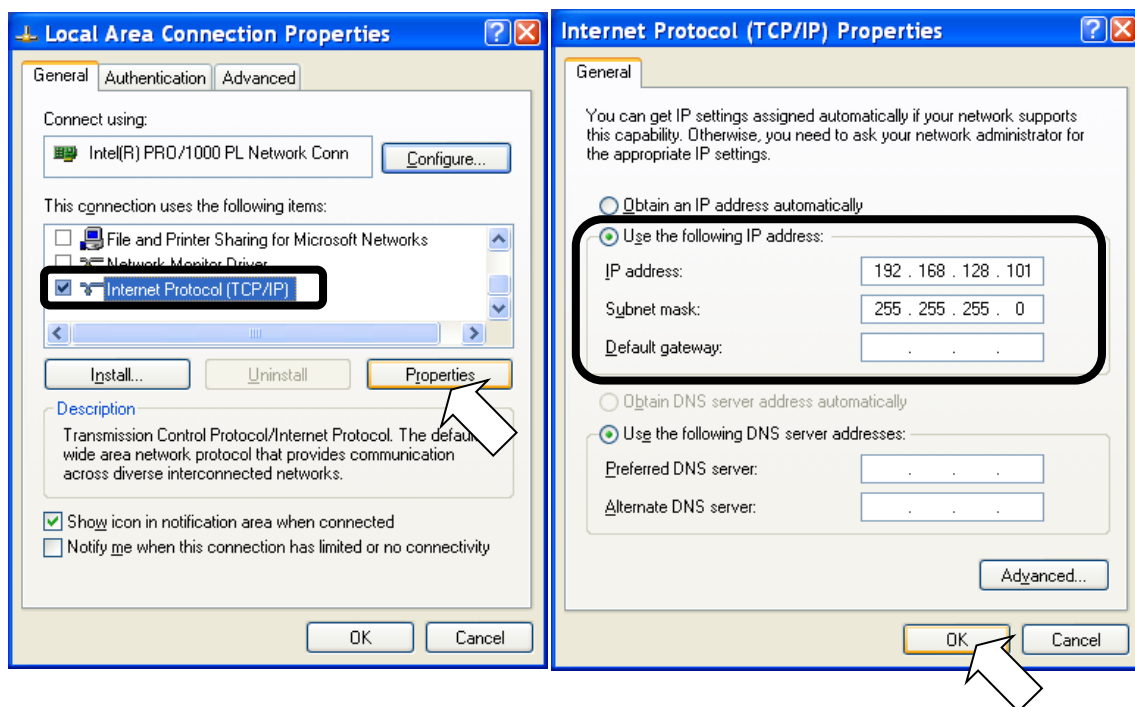


- iii). Double click [Network Connections].
  - [Network Connections] window is displayed.
- iv). Select [Local Area Connection] and right-click, then click [Properties] from displayed menu.
  - [Local Area Connection Properties] dialogue box is displayed.
  - Confirm that [General] tab is displayed on the front of the screen.





- v). Select [Internet Protocol (TCP/IP)] and click [Properties] button.
  - [Internet Protocol (TCP/IP) Properties] dialogue box is displayed.
  - Select [Use the following IP address] and input [IP address] and [Subnet mask] to be on the same network as JUE-501/251. Do not input any IP address for [Default gateway].
    - e.g. When the BDE's IP address is 192.168.128.100
    - Input 192.168.128.101 for [IP address] and 255.255.255.0 for [Subnet mask].
- Select [Use the following DNS server addresses] and do not input any DNS addresses for [Preferred DNS server] and [Alternate DNS server].



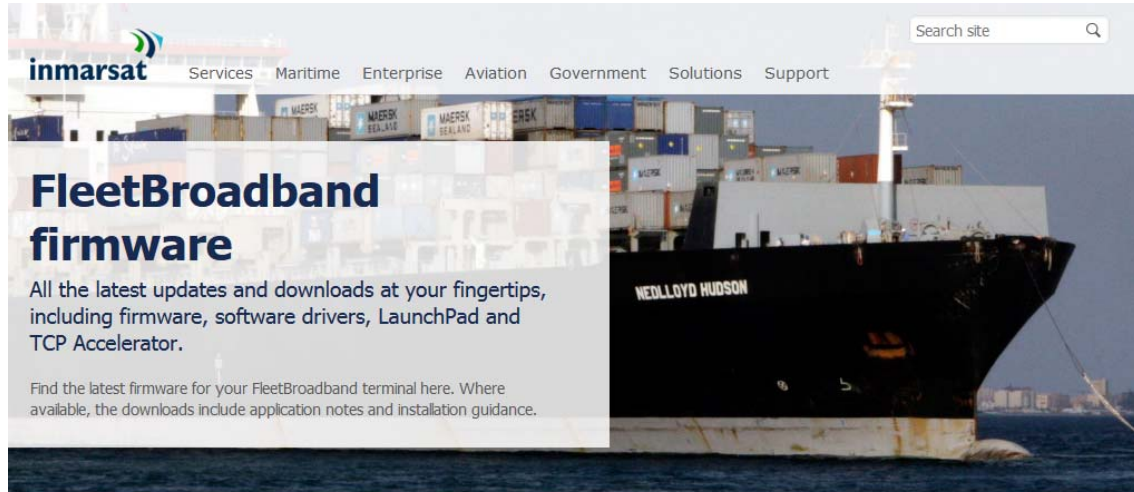
- vi). Click [OK] button.
  - Screen is returned to [Local Area Connection Properties] dialogue box.
- vii). Click [OK] button.
  - If message of rebooting is displayed, reboot a PC.

## 2. Download the latest software for JUE-501/251


The latest software of JUE-501/251 is uploaded on the HP of Inmarsat.


The URL is as follows:


<http://www.inmarsat.com/support/fleetbroadband-firmware/>



Manufacturer	Terminal(s)	Version	OS	Size	Download
PC Mac					
<b>WIDEYE</b>					
	iFleetONE	R01.0.2	X X	9.63MB	<a href="#">zip</a>
	Skipper 150	1.7.0	X X	8.73MB	<a href="#">zip</a>
	FX 150	2.0.3	X X	8.35MB	<a href="#">zip</a>
	FX 250	2.0.4	X X	8.41MB	<a href="#">zip</a>
	FX 500	2.0.4	X X	8.41MB	<a href="#">zip</a>
<b>JRC</b>					
	JUE-250	01.31	X	5.43MB	<a href="#">zip</a>
	JUE-500	11.44	X	7.41MB	<a href="#">zip</a>
	JUE-251	02.03	X	12.39MB	<a href="#">zip</a>
	JUE-501	02.03	X	12.39MB	<a href="#">zip</a>
<b>Satlink</b>					
	Satlink 150	1.7.0	X X	7.85MB	<a href="#">zip</a>
	Satlink 250	1.7.2	X X	7.80MB	<a href="#">zip</a>
	Satlink 250+	1.7.3	X X	7.94MB	<a href="#">zip</a>
<b>Thrane &amp; Thrane / Cobham SATCOM</b>					
	FleetOne SAILOR 150, 250 and 500	1.24	X X	6.93MB	<a href="#">zip</a>
	IP handset	1.17	X X	11MB	<a href="#">zip</a>


**Contact support**  
 Need assistance? Get in touch with our Customer Service team


**Partner search**  
 Find a service provider


**Subscribe**  
 Stay up to date with news and information from Inmarsat

### FleetBroadband firmware

[FleetBroadband LaunchPad](#)

[FleetBroadband TCP Accelerator](#)

If the software's version on the HP is larger than the JUE-501/251's software version, download the software from HP.

Software version of JUE-501/251 main unit can be displayed on Handset screen with following operation:

<1> Status - <5> Unit Info - <2> Mainte No.- BDE-App

### 3. Update JUE-501/251 software

#### Note

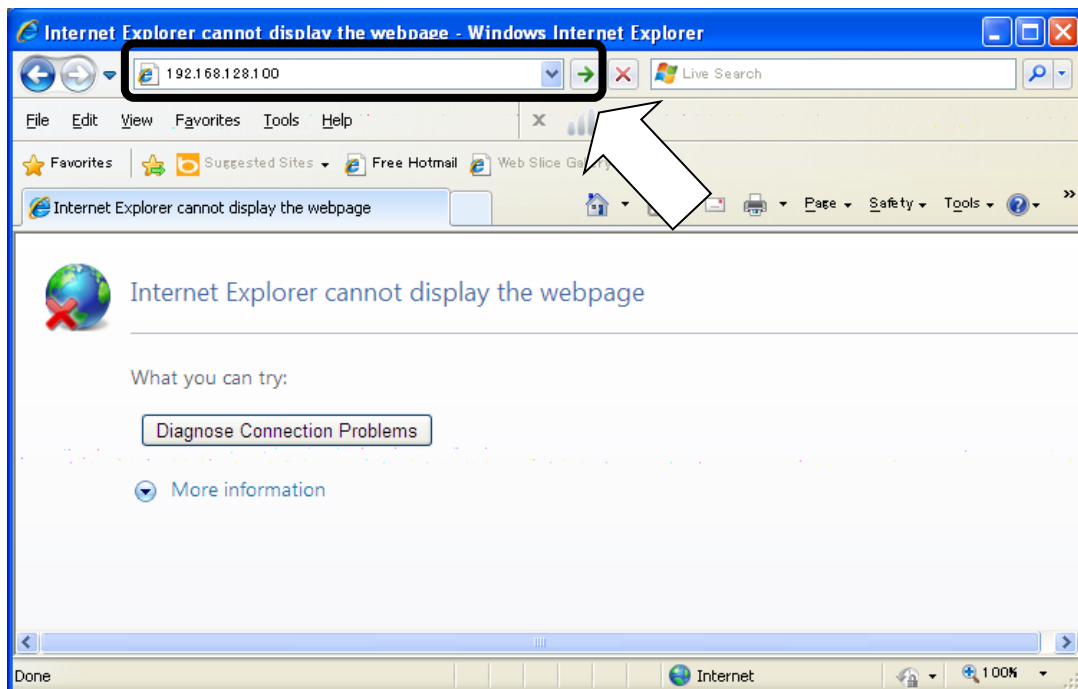
- Do not turn OFF the power supply of JUE-501/251 and/or PC during the software forwarding or updating
- Software forwarding or updating takes up to 3 minutes.

- (1) Activate your JUE-501/251 and confirm that initialization is completed.

\* [Initialize] is displayed during initialization on the Handset screen.


Initialize

- (2) Launch your Web browser\*<sup>1</sup> and enter the IP address of JUE-501/251 to the URL box. Then press [Enter] key.



Confirm the IP address of JUE-501/251 from the Handset.

- BDE's IP address can be referred at the Handset menu, <9> Admin - Input secret code (initial value 0001) - <3> Port - <3> Ethernet -<1>User LAN

Press  on hook button and close the menu after you confirm the IP address.

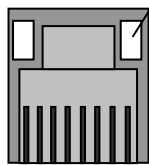
\*<sup>1</sup> While JUE-501 / JUE-251 officially supports Microsoft Internet Explorer7 and Mozilla Firefox3.6, their upper version can be available when they have compatible system.

**[\*] If the WEB menu won't open**

If the WEB menu won't open, check the both IP addresses of JUE-501/251 and your PC and confirm they are on the same network.

- The IP address of JUE-501/251 can be confirmed by (i) of [1.Confirm the connection].
- The IP address of PC can be confirmed by (ii) of [1.Confirm the connection].

If the WEB menu won't open with the correct IP address setting, check the User LAN port LED on back panel. Link LED will blink when the link between PC and the User LAN port is established.

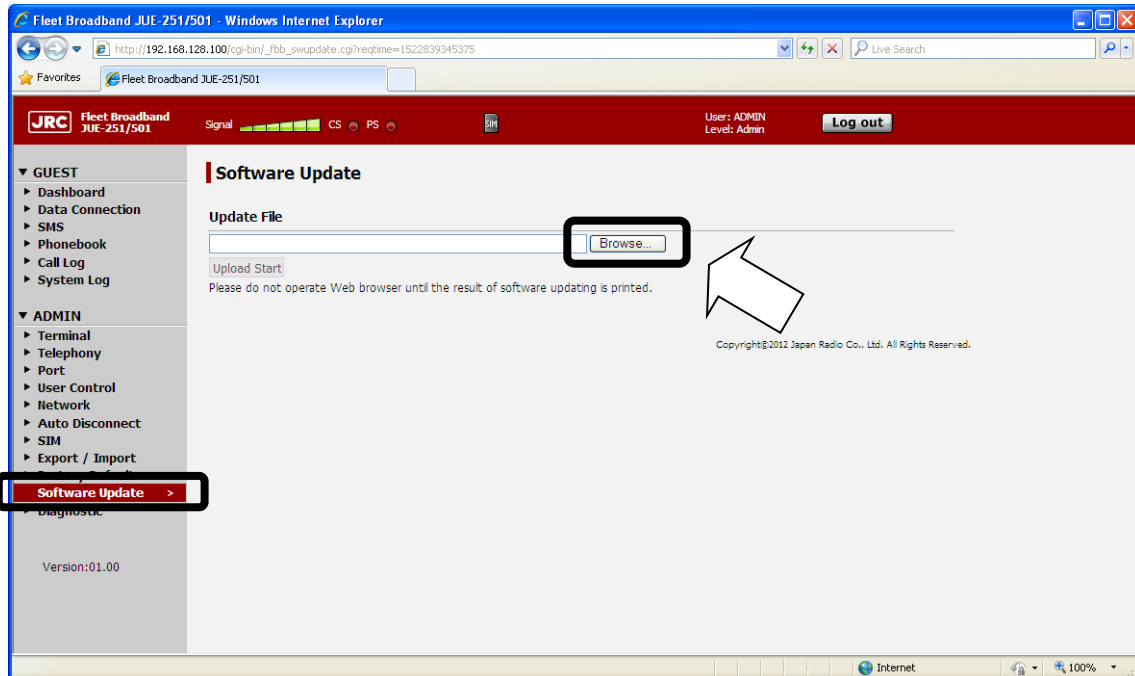


**Link LED:**

Blink when the link with the connected terminal has been established.  
(The color is orange for 10Base-T and green for 100-Base-T.)

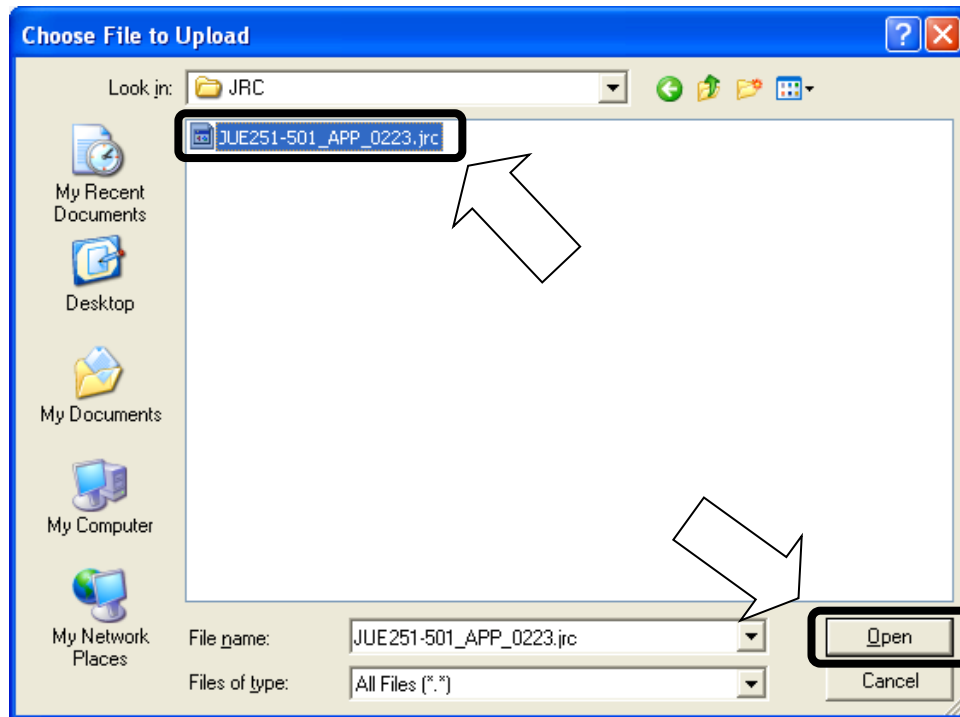
Link between PC and the User LAN port has not been established when the Link LED doesn't blink. Disconnect and connect the LAN cable again.

- (3) Click [Software Update] on the left [menu] panel, after login by Admin level (User: ADMIN / Secret Code: 0001 (Default) ). [Software Update] screen will be displayed.

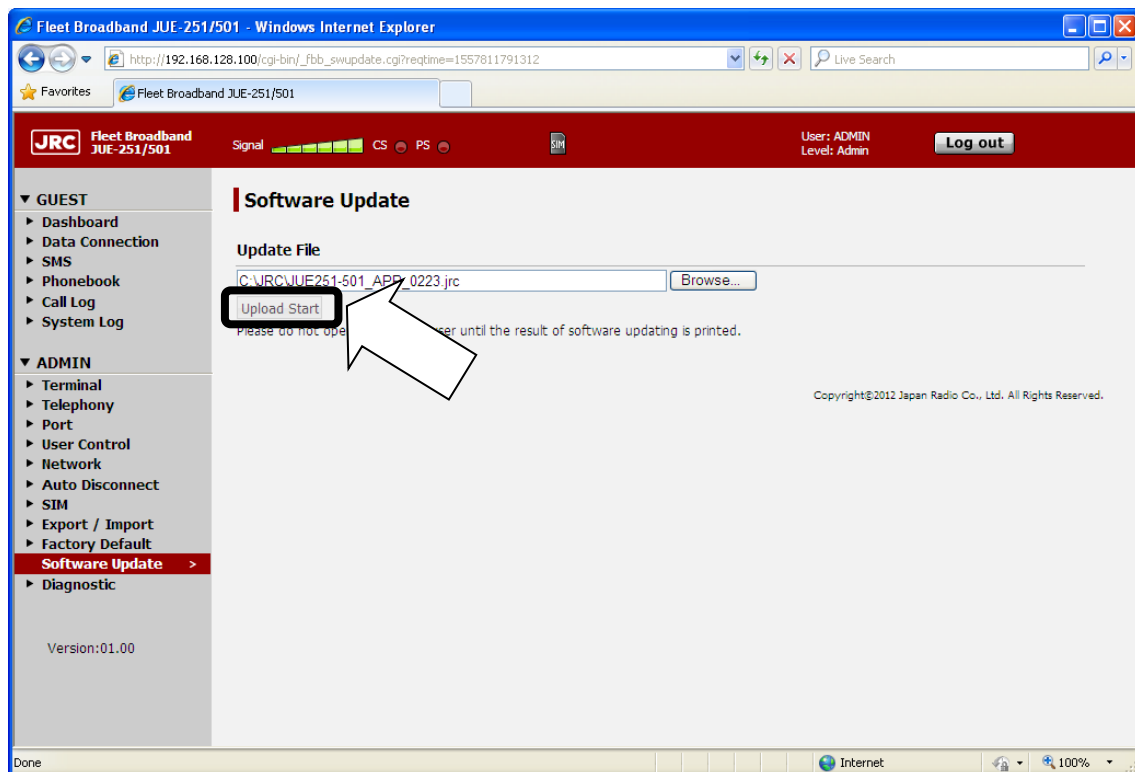


- (4) Click [Browse] button. Then file selection dialog will appear.

- (5) Select the file you have downloaded at [2. Download the latest software for JUE-501/251] and click [Open].



- (6) Click [Upload Start] button.
- The [Upload Start] button changes into disable (gray).
  - Wait until the update was completed and the result is printed.

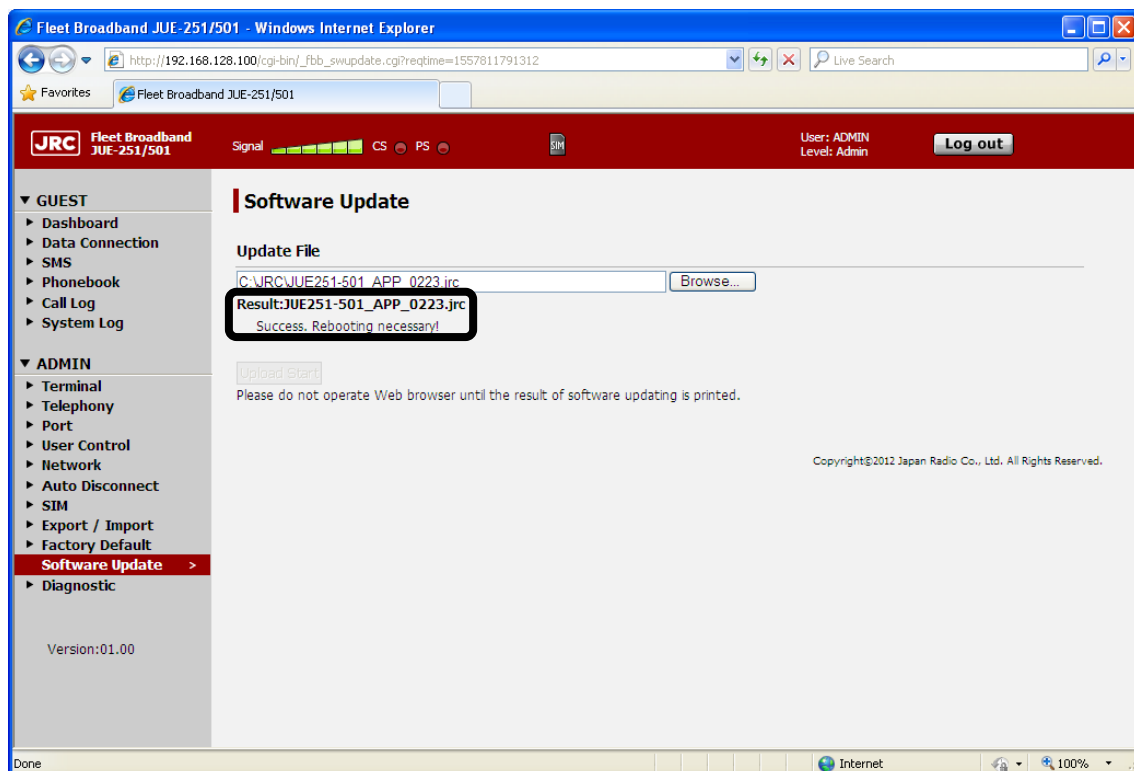


(7) Check the result.

#### NOTE

- Please do not operate your Web browser until the result is printed on the screen.
- It may take more than 3 minutes.
- In the case of unresponsiveness in 5 minutes, reboot JUE-501/251 and retry software updating with following the software updating procedure (on page 2 of this manual) from a) to d).

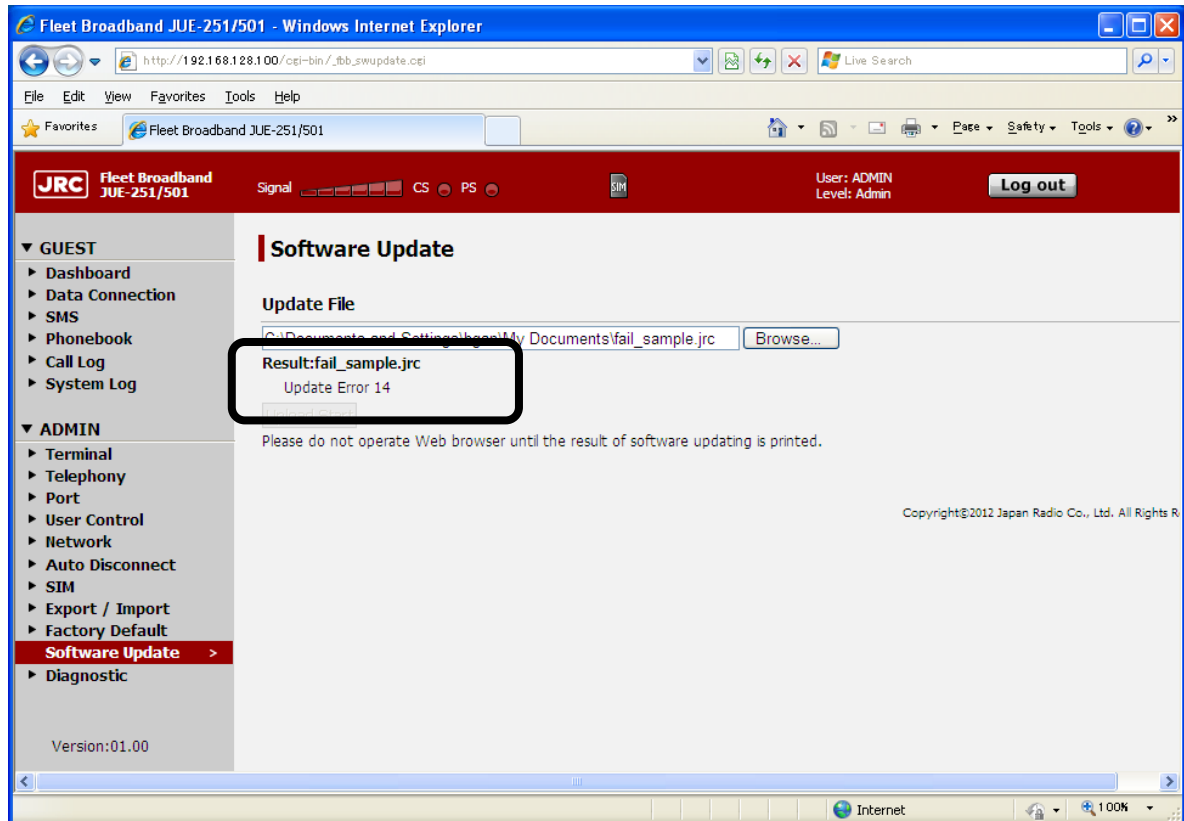
- [Success] is displayed when the update finished successfully. Then, reboot your system.  
When ADE software is updated, the system update ADE software automatically after the system is rebooted (“ADE Update” is displayed in Handset screen. The elapsed time is about 5 minutes). And then the system starts normally.
- [Error] is displayed when the update has failed. Refer “[\*] When software update is failed” in next page.



**[\*] When software update is failed**

Update is failed when “Update Error” is printed on your Web browser.

Check the error code below. Reboot your JUE-501/JUE-251 and retry updating with following the software updating procedure (on page 2 of this manual) from a) to d).



**Table: Software updating error code**

Code	Supposed cause
1	The system is under the software updating already.
2~13 and 17	Internal error.
14~16	The file you uploaded is wrong file.
21~31	It failed in uploading the file.

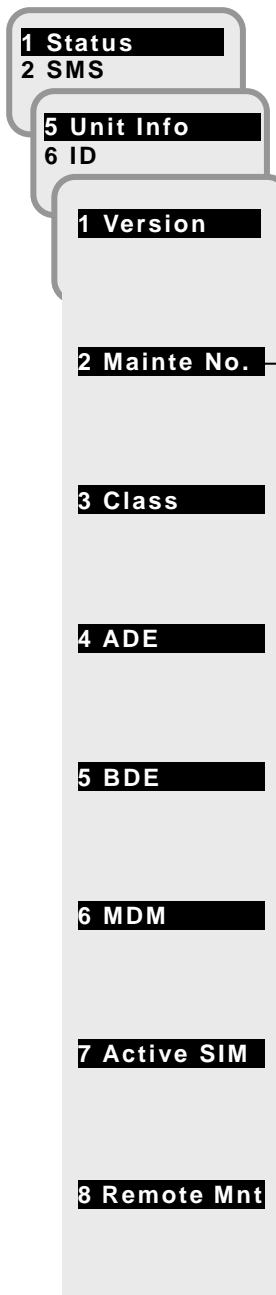


#### 4. Confirm the updated software version

Check that the software version is correctly updated or not, from the following the Handset menu,  
<1> Status - <5> Unit Info - <2> Mainte No.

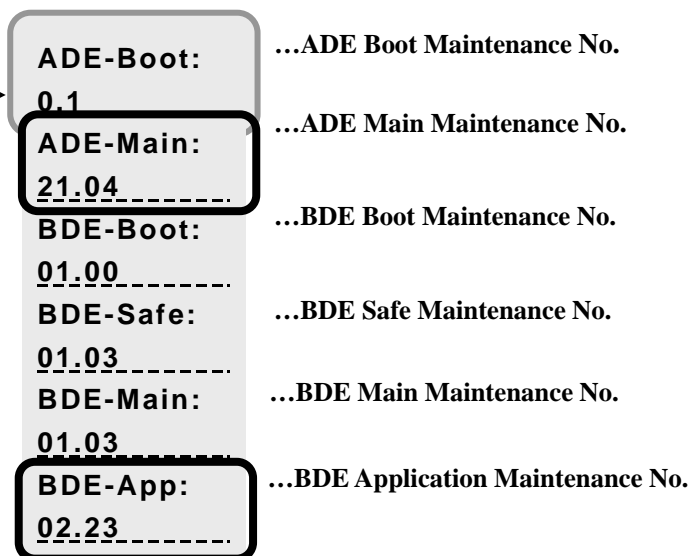
When the update is succeeded, BDE-App No. is changed to the same number as the [0223] of the software file [JUE-251-501\_APP\_0223.jrc]. Please also check ADE-Main is 21.04.

##### Unit Info menu screen



OK

##### 2. Mainte No. display screen



**[Reference] Software downgrading procedure**

- A) Turn OFF the power supply of JUE-501/251.
- B) Repeat the software updating procedure from [3. Update JUE-501/251 software]. Use [JUE251-501\_APP\_XXXX.jrc] in CD-ROM of JUE-501/251 to execute, instead of the downloaded file [JUE251-501\_APP\_0223.jrc].

## Setting menu for disabling AT command, IP phone, IPsec VPN, and/or Proxy DNS function

The setting menu for disabling AT command, IP phone, IPsec VPN, and/or Proxy DNS function is added to Web menu (Admin – Terminal) and Handset menu (9 Admin – 1 Terminal – 0 Setting).

(1) Web menu

### 6.5 Menus for Admin Users

#### 6.5.1 Set Basic Information (Terminal Screen)

To enter the Terminal screen, select “Terminal” from the left [menu] panel.

On this screen, the basic data of JUE-501/251 can be set.

Also the blockage areas up to six can be registered to indicate the antenna of JUE-501/JUE251 is being hidden from satellite by an obstruction like ship’s mast or funnel.

**Terminal**

**Setting**

1)	Delivery Date	1	/	JAN	/	2012
2)	Local Time	+	0	:	00	
3)	Tracking	Auto	Sync/Step			
4)	GPS Input	Disable				
5)	VDR Output	LAN				
6)	WRF	Disable				
7)	Panel LED	ON				
8)	Ethernet LED	ON				
9)	IP Header Compression	Enable				
10)	AT Command	Enable				
11)	IPTTEL	Enable				
12)	IPSEC	Enable				
13)	Proxy-DNS	Enable				
14)	Auto Web Logout Time	Disable				min

15)

**Blockage Indication**

	16)	17)	18)	19)	20)
		Upper limit EL	Lower limit EL	Left border BR	Right border BR
Blockage Area 1	Disable				
Blockage Area 2	Disable				
Blockage Area 3	Disable				
Blockage Area 4	Disable				
Blockage Area 5	Disable				
Blockage Area 6	Disable				

21)

**Manual Reboot** 22)

Fig. 6.5.1a Terminal Screen

Table. 6.5.1a Contents of Terminal-Setting

Display		Contents
1)	Delivery Date	Operation starting date of JUE-501/JUE-251 Delivery date does not only record the day when the JUE-501/JUE-251 was installed and communication commenced, but it helps to determine the guarantee term etc. Accurate setting is recommended.
2)	Local Time	Time differences between UTC (Universal Time Coordinated) and Local time Select [+] when Local time is faster than UTC, and [-] when it is slower.
3)	Tracking	Tracking method of JUE-501/JUE-251 Select the tracking system from Auto or Gyro. When Gyro is selected, Gyro type is required. Select Gyro type from Sync/Step, NMEA(4.8k), NMEA(38.4k) or LAN. System reboot is required to apply this setting.
4)	GPS Input	Input method of external GPS Select one from Disable (use only built-in GPS), NMEA(4.8k), NMEA(38.4k) or LAN. System reboot is required to apply this setting.
5)	VDR Output	Output method to VDR for sending Alarmpack of JUE-501/JUE-251 Select Disable or LAN. System reboot is required to apply this setting.
6)	WRF	Setting for WRF (Wide-band Radio Frequency) interface. The WRF interface is needed for a navigation system to receive the satellite signal directly. "Enable" uses wide band filter. "Disable" uses narrow band filter and prevents interference of any other radio waves. "Auto" changes the using filter automatically.
7)	Panel LED	Setting for ON/OFF of the LEDs on the front panel of main unit
8)	Ethernet LED	Setting for ON/OFF of the Ethernet LEDs on the back panel of main unit If "Ethernet LED" is set to "OFF", the Ethernet LED lamps will remain turned off even when some devices are connected to the LAN ports.
9)	IP Header Compression	Enable or disable IP Header Compression System reboot is required to apply this setting.
10)	AT command	Enable or disable AT command function
11)	IPTTEL	Enable or disable IPTTEL function
12)	IPSEC	Enable or disable IPsec VPN function
13)	Proxy-DNS	Enable or disable Proxy-DNS function

Added

14)	Auto Web Logout Time	Enable or disable Auto Web Logout function When Enable is selected, the time (1 to 240 min) to logging out of Web menu automatically from last access is required.
15)	SET	Registers the setting contents

**Table. 6.5.1b Contents of Terminal-Blocking Indication**

Display		Contents
16)	Enable/Disable	Use or non-use of the Blockage Area
17)	Upper limit EL	Upper limit elevation for the blockage area (Range: 1 to 90 )
18)	Lower limit EL	Lower limit elevation for the blockage area (Range: 1 to 90 )
19)	Left border BR	Bearer value for Left border of the blockage area (Range: 0 to 359 )
20)	Right border BR	Bearer value for Right border of the blockage area (Range: 0 to 359 )
21)	SET	Registers the setting contents

**Table. 6.5.1c Contents of Terminal-Manual Reboot**

Display		Contents
22)	Reboot	Reboot the system from Web menu.

(2) Handset menu

7.9.1.3 Tracking setting ( **[MENU]** + **[9]** + **[1]** + **[3]** )

In this menu, user can enable or disable AT command, IPTEL, IPSEC or Proxy-DNS function.

To change the setting, first, select the function by **▼▲** buttons and press **OK**. Next select Enable or Disable by **▼▲** buttons and press **OK**.

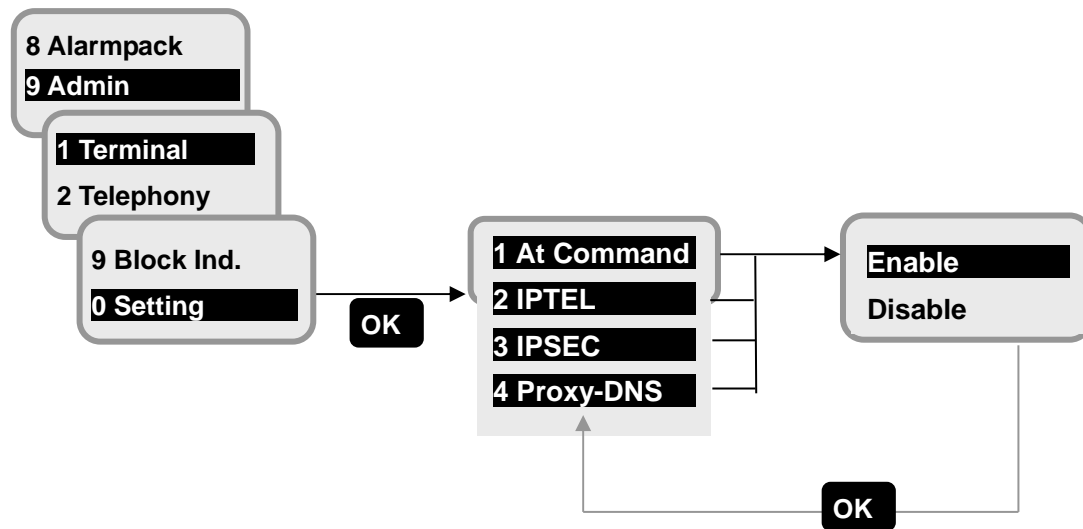


Fig. 7.9.1.3 Tracking Setting screen

## Setting menu for Auto Web log-out function

The setting menu for Auto Web log-out function is added to Web menu (Admin – Terminal).

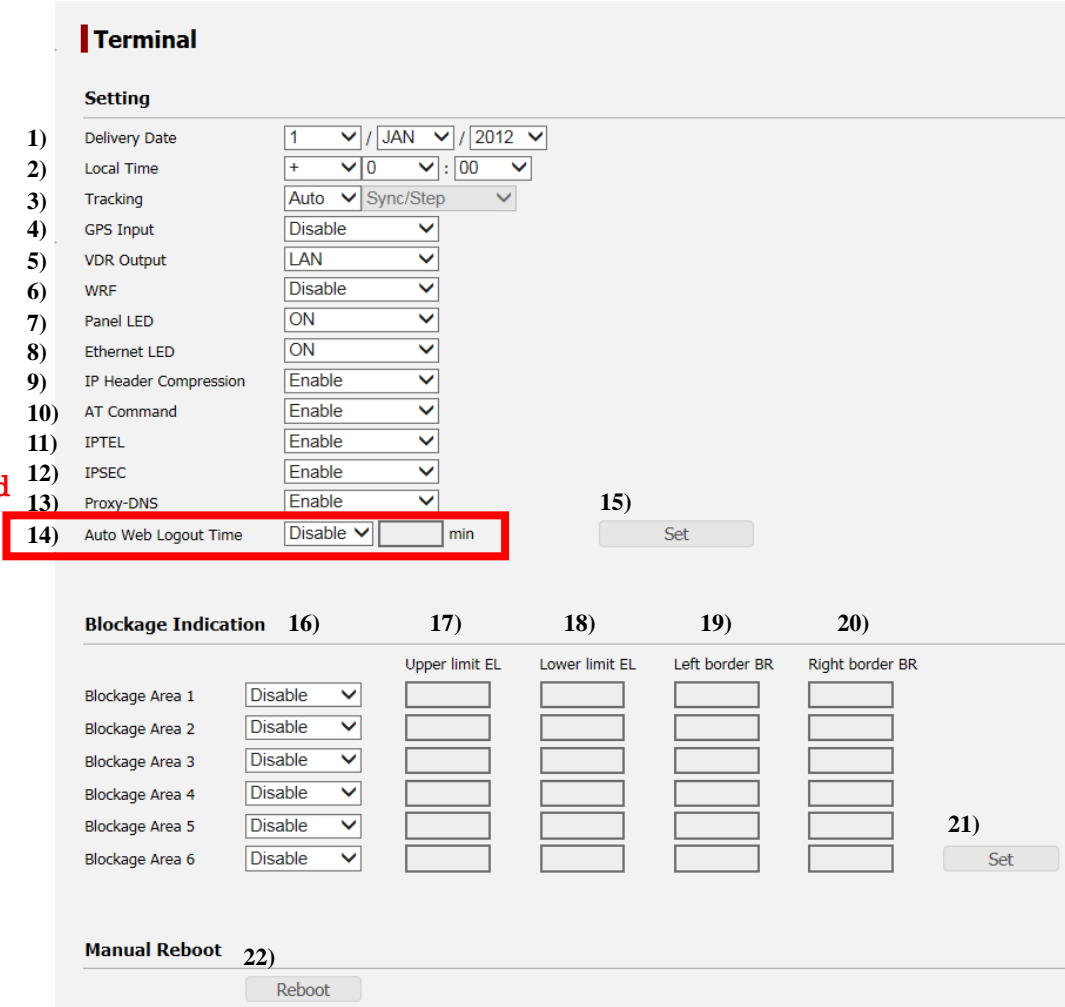
### 6.5 Menus for Admin Users

#### 6.5.1 Set Basic Information (Terminal Screen)

To enter the Terminal screen, select “Terminal” from the left [menu] panel.

On this screen, the basic data of JUE-501/251 can be set.

Also the blockage areas up to six can be registered to indicate the antenna of JUE-501/JUE251 is being hidden from satellite by an obstruction like ship’s mast or funnel.



**Terminal**

**Setting**

1)	Delivery Date	1	JAN	2012
2)	Local Time	+	0	: 00
3)	Tracking	Auto	Sync/Step	
4)	GPS Input	Disable		
5)	VDR Output	LAN		
6)	WRF	Disable		
7)	Panel LED	ON		
8)	Ethernet LED	ON		
9)	IP Header Compression	Enable		
10)	AT Command	Enable		
11)	IPTEL	Enable		
12)	IPSEC	Enable		
13)	Proxy-DNS	Enable		
14)	Auto Web Logout Time	Disable		min

15) Set

**Blockage Indication**

	16)	17)	18)	19)	20)
		Upper limit EL	Lower limit EL	Left border BR	Right border BR
Blockage Area 1	Disable				
Blockage Area 2	Disable				
Blockage Area 3	Disable				
Blockage Area 4	Disable				
Blockage Area 5	Disable				
Blockage Area 6	Disable				

21) Set

**Manual Reboot** 22)

Reboot

Fig. 6.5.1a Terminal Screen

Table. 6.5.1a Contents of Terminal-Setting

Display		Contents
1)	Delivery Date	Operation starting date of JUE-501/JUE-251 Delivery date does not only record the day when the JUE-501/JUE-251 was installed and communication commenced, but it helps to determine the guarantee term etc. Accurate setting is recommended.
2)	Local Time	Time differences between UTC (Universal Time Coordinated) and Local time Select [+] when Local time is faster than UTC, and [-] when it is slower.
3)	Tracking	Tracking method of JUE-501/JUE-251 Select the tracking system from Auto or Gyro. When Gyro is selected, Gyro type is required. Select Gyro type from Sync/Step, NMEA(4.8k), NMEA(38.4k) or LAN. System reboot is required to apply this setting.
4)	GPS Input	Input method of external GPS Select one from Disable (use only built-in GPS), NMEA(4.8k), NMEA(38.4k) or LAN. System reboot is required to apply this setting.
5)	VDR Output	Output method to VDR for sending Alarmpack of JUE-501/JUE-251 Select Disable or LAN. System reboot is required to apply this setting.
6)	WRF	Setting for WRF (Wide-band Radio Frequency) interface. The WRF interface is needed for a navigation system to receive the satellite signal directly. "Enable" uses wide band filter. "Disable" uses narrow band filter and prevents interference of any other radio waves. "Auto" changes the using filter automatically.
7)	Panel LED	Setting for ON/OFF of the LEDs on the front panel of main unit
8)	Ethernet LED	Setting for ON/OFF of the Ethernet LEDs on the back panel of main unit If "Ethernet LED" is set to "OFF", the Ethernet LED lamps will remain turned off even when some devices are connected to the LAN ports.
9)	IP Header Compression	Enable or disable IP Header Compression System reboot is required to apply this setting.
10)	AT command	Enable or disable AT command function
11)	IPTTEL	Enable or disable IPTTEL function
12)	IPSEC	Enable or disable IPsec VPN function
13)	Proxy-DNS	Enable or disable Proxy-DNS function



Added

14)	Auto Web Logout Time	Enable or disable Auto Web Logout function When Enable is selected, the time (1 to 240 min) to logging out of Web menu automatically from last access is required.
15)	SET	Registers the setting contents

**Table. 6.5.1b Contents of Terminal-Blocking Indication**

Display		Contents
16)	Enable/Disable	Use or non-use of the Blockage Area
17)	Upper limit EL	Upper limit elevation for the blockage area (Range: 1 to 90 )
18)	Lower limit EL	Lower limit elevation for the blockage area (Range: 1 to 90 )
19)	Left border BR	Bearer value for Left border of the blockage area (Range: 0 to 359 )
20)	Right border BR	Bearer value for Right border of the blockage area (Range: 0 to 359 )
21)	SET	Registers the setting contents

**Table. 6.5.1c Contents of Terminal-Manual Reboot**

Display		Contents
22)	Reboot	Reboot the system from Web menu.

# Inmarsat FB500/FB250 JUE-501/JUE-251 Software Version List (1/3)

No.	Ver.	Maintenance No.		Modification
14	2.23	ADE	Boot 0.1	No change
			Main 21.04	No change
		BDE	Boot 01.00	No change
			Safe 01.03	No change
			Main 01.03	No change
			App 02.23	- Functions added: 1) Added the function to disable AT command, IP phone, IPsec VPN and/or Proxy DNS. 2) Added the function to record access log to JUE-501/JUE-251 Web menu. 3) Corresponded to the blocking area display function implemented to JRC MFD. - Functions improved: 1) Improved the log-in function to JUE-501/JUE-251 Web menu. 2) Improved the incorrect indication in "WAN Selector" in the Web Dashboard screen. 3) Improved the symptom that the incorrect ", (comma)" is added in Alarmpack file. 4) Improved the incorrect indication in Handset Call Log screen.
13	02.11	ADE	Boot 0.1	No change
			Main 21.04	No change
		BDE	Boot 01.00	No change
			Safe 01.03	No change
			Main 01.03	No change
			App 02.11	- Functions added: 1) The switching satellite by the indication of SAS (Russian area) 2) The getting a Logpack file by Guest user 3) The manual calibraion for ADE sensor from Handset menu 4) Supported Windows 10 (32/64bit) OS - Functions improved: 1) Automatic reboot in waters close to China 2) Hang up on activating Standard/Streaming IP by PPPoE
12	02.03	ADE	Boot 0.1	No change
			Main 21.04	- Function improved: 1) Added automate calibration function for ADE sensor on JUE-501(for JUE-501)
		BDE	Boot 01.00	No change
			Safe 01.03	No change
			Main 01.03	No change
			App 02.03	- Function added: 1) Added function to enable or disable IP header compression setting (for JUE-501 and JUE-251) - Functions improved: 1) Added automate calibration function for ADE sensor on JUE-501(JUE-501) 2) Improved that the issue that JUE-501/JUE-251 operated in GYRO satellite tracking mode repeats satellite search may occur (for JUE-501 and JUE-251)
11	01.96	ADE	Boot 0.1	No change
			Main 21.01	No change
		BDE	Boot 01.00	No change
			Safe 01.03	No change
			Main 01.03	No change
			App 01.96	- Function improved: 1) Improved the issue that the SIM card cannot be recognized.
10	01.95	ADE	Boot 0.1	No change
			Main 21.01	- Function added: 1) Added function for calibrating ADE sensor. (The function is same as that of BDE-App 98.01)
		BDE	Boot 01.00	No change
			Safe 01.03	No change
			Main 01.03	No change
			App 01.95	- Functions added: 1) Supported MEAS (Middle East and Asia) satellite. 2) Supported Inmarsat FX (Fleet Xpress) service. 3) Added function to configure the operation mode for User LAN port. 4) Added new AT command "AT_IJCGDCONT" for PPPoE 5) Added function for calibrating ADE sensor. (The function is same as that of BDE-App 98.01) - Function improved: 1) Improved the issue that wrong APN User/Password is set in Web screen.
9	98.01	ADE	Boot 0.1	No change
			Main 21.01	- Function added: 1) Added the function for calibrating ADE sensor.
		BDE	Boot 01.00	No change
			Safe 01.03	No change
			Main 01.03	No change
			App 98.01	- Function added: 1) Added the function for calibrating ADE sensor.

# Inmarsat FB500/FB250 JUE-501/JUE-251 Software Version List (2/3)

No.	Ver.	Maintenance No.			Modification
8	01.78	ADE	Boot	0.1	No change
			Main	20.01	No change
		BDE	Boot	01.00	No change
			Safe	01.03	No change
			Main	01.03	No change
			App	01.78	<div>- Functions added: 1) Supported the Non-SOLAS Voice Distress service. - Functions improved; 1) Improved the Alphasat satellite issue that the terminal status repeats “SAT SEARCH” and “REGISTERING” alternatively, does not become “CS PS READY” and communication (voice and data) is failed in the specific area by changing the satellite in EMEA ocean region from I4 satellite to Alphasat satellite. 2) Changed that the service user “NAFOZgdiKF” who used with the tentative countermeasure of the above Alphasat satellite issue cannot log-in to JUE-501/JUE-251 Web menu. 3) Changed the specification of the PPPoE function.</div>
7	01.65	ADE	Boot	0.1	No change
			Main	20.01	No change
		BDE	Boot	01.00	No change
			Safe	01.03	No change
			Main	01.03	No change
			App	01.65	<div>- Functions added: 1) Added the fuction for Call Waiting and Call Holding of Telephone Supplementary Service. 2) Extended the function for Auto Answer for Voice/Audio call. - Functions improved; 1) Improved the voice quality of Multi-Voice function.</div>
6	01.57	ADE	Boot	0.1	No change
			Main	20.01	No change
		BDE	Boot	01.00	No change
			Safe	01.03	No change
			Main	01.03	No change
			App	01.57	<div>- Functions added: 1) Added the function to set Call Forwarding and Call Barring of Telephone Supplementary Service. 2) Added the function to get the file which is needed to diagnostic the JUE-501/251 collectively. - Functions improved; 1) Improved the issue that the packet cannot be sent to the air on Standard IP/Streaming IP communication infrequently.</div>
5	01.45	ADE	Boot	0.1	No change
			Main	20.01	No change
		BDE	Boot	01.00	No change
			Safe	01.03	No change
			Main	01.03	No change
			App	01.45	<div>- Functions added: 1) Added Multi-Voice function 2) Supported Mimstone IP telephone (model: IP255P) 3) Extended PPPoE function - Functions improved; 1) Improvement of functions for Xpress Link system of Inmarsat</div>
4	01.33	ADE	Boot	0.1	No change
			Main	20.01	No change
		BDE	Boot	01.00	No change
			Safe	01.03	No change
			Main	01.03	No change
			App	01.33	<div>- Functions added: 1) Added Handset functions for incoming calls 2) Extended PPPoE Function 3) Added some WEB menus - Functions improved; 1) Support and improvement of functions for Xpress Link system of Inmarsat 2) Improvement of the display-content and operability of some WEB menus</div>
3	01.23	ADE	Boot	0.1	No change
			Main	20.01	No change
		BDE	Boot	01.00	No change
			Safe	01.03	No change
			Main	01.03	No change
			App	01.23	(1) In only a few BDE, 2-wire telephone outgoing call and ISDN incoming/outgoing call may be impossible, and improved it.
2	01.22	ADE	Boot	0.1	No change
			Main	20.01	No change
		BDE	Boot	01.00	No change
			Safe	01.03	No change
			Main	01.03	No change
			App	01.22	<div>(1) Add Multi-Voice function with Vocality Basics Multivoice (2) Add Bridge mode for PS connection (3) Add User registration function for ISDN dialup from shore side (4) Improve Character checking function of APN (Access Point Name) user name and password for special characters</div>

# Inmarsat FB500/FB250 JUE-501/JUE-251 Software Version List (3/3)

No.	Ver.	Maintenance No.		Modification	
1	01.14	ADE	Boot	0.1	Initial release
			Main	20.01	Initial release
		BDE	Boot	01.00	Initial release
			Safe	01.03	Initial release
			Main	01.03	Initial release
			App	01.14	Initial release