

Technical Bulletin



TB-76 / December 18, 2014

Simrad Technical Bulletin for MX61x/GN70 CDU and GS70 Antenna Software

Product: GN70/MX61x, MX61xJB and GN70 Smart Antenna
Product Description: SIMRAD GN70/MX610/MX612 CDU
SIMRAD MX610JB Junction Bo
SIMRAD MX612JB Junction Box
GS70 Antenna

Software Version
CDU: V1.0.42.256
Junction Box: V1.0.01.28
GS70: V1.1.02.2

Effective Date: December 9, 2014
Update Logistic Center Stock: YES and provide detail
Update Distributor Stock: YES and provide detail



This software update provides improvements on existing features and added enhancements to the GN70/MX610/MX612 CDU, MX61xJB (MX610JB/MX612JB), junction boxes and the GS70 smart antenna.

Notes:

1. Please make sure that both CDU & Junction Box are updated to the latest version.
2. The junction box software must be updated first before doing the CDU.
3. On the MX612JB, please make sure that the s/w of the three gateways is updated: one gateway at a time.

The following is included in this release:

Added Features	GN70 Sys.	MX610 Sys.	MX612 Sys.
WPL Output message via NMEA 0183	Yes	Yes	Yes
RTE Output message via NMEA 0183	Yes	Yes	Yes
Printer output (RS-422) @ 4800 Baud and greater	Yes	Yes	Yes
Display Wind data with NMEA 0183 input in junction box	Yes	Yes	Yes
Display Depth data with NMEA 2000 or 0183 input	Yes	Yes	Yes



NMEA messages (GGA, DTM, VTG, ZDA, HDT) output on ports 1 and 2 are defaulted to ON	Yes	Yes	Yes*
Display Pitch and Roll information with input via NMEA 0183	Yes	Yes	Yes
Store CFG settings, WPT and RTE in USB	No	Yes	Yes
Added 24-Hour HDOP screen (see Figure A)	Yes	Yes	Yes
Added “Antenna Reset” selection under GPS Settings page to reset the GS70 antenna (see Figure B)	Yes	Yes	Yes
Auto Position source selection if more than 1 antenna or source is connected in the N2K bus (see Figure C)	Yes	Yes	Yes
Elevation mask angle configuration for MX antennas	Yes	Yes	Yes
Capability to control multiple junction boxes in the same N2K network	Yes	Yes	Yes

*In MX612 model, default messages are also output on port 5,6,9,10

Improvements	GN70	MX610	MX612
Control of SOG/COG filtering in MX521A/B & MX575C/D antennas connected via NMEA 0183 port	Yes	Yes	Yes
Fixed missing time zone offset in ZDA message*	Yes	Yes	Yes
Correction to HDT message	Yes	Yes	Yes
Fixed APB sentence with missing data	Yes	Yes	Yes
Fixed XTE message with missing data	Yes	Yes	Yes
Improved VHW message to conform to USCG requirement	Yes	Yes	Yes
Fixed DPT output sentence	Yes	Yes	Yes

*NMEA 2000® network with more than one CDU must use the same time offset.

GS70 Antenna			
Improved COG/SOG filter values (High, Mid & Lo) in the GS70 smart antenna	Yes	Yes	Yes
Added GPS+GLONASS capability*	Yes	Yes	Yes

*Reset of antenna maybe required after activation of GPS+GLONASS reception.

IMPORTANT:

An external 12 VDC supply to the NMEA 2000® bus is required for upgrading the MX610JB/MX612JB junction box software as the internal supply will be switched off during the upgrade process and programming will fail. See the diagram below.

Note: The junction box software must be updated first before updating the display

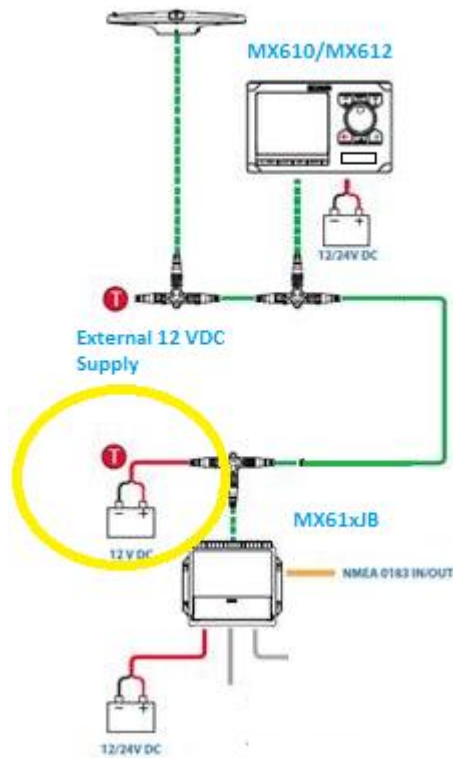


Diagram 1: Programming setup with external 12 VDC supply

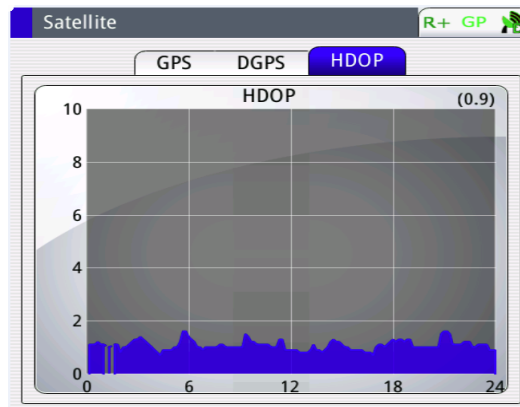


Figure A: 24-Hour HDOP graph screen

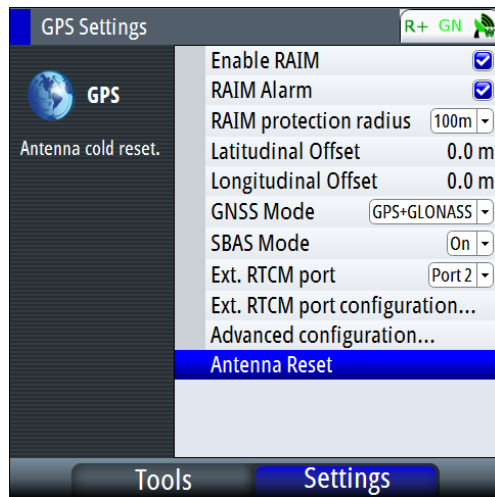


Figure B: Antenna Reset selection

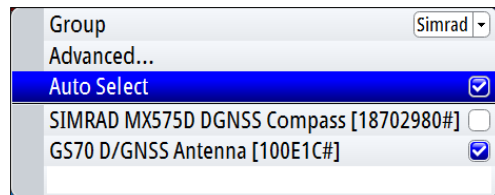


Figure C: Auto Select of position source

Software Files

Download the software files using following link:

<http://pro.simrad-yachting.com/en-US/Support/Downloads/MX61x-Software-Update/>

For More Information:

Order Support: (800) 324-4737
 Technical support: (918) 438-8668

You may also send any inquiries via email to the addresses listed below, according to your sales-group classification:

- orders@navico.com
- Pro.support@navico.com