

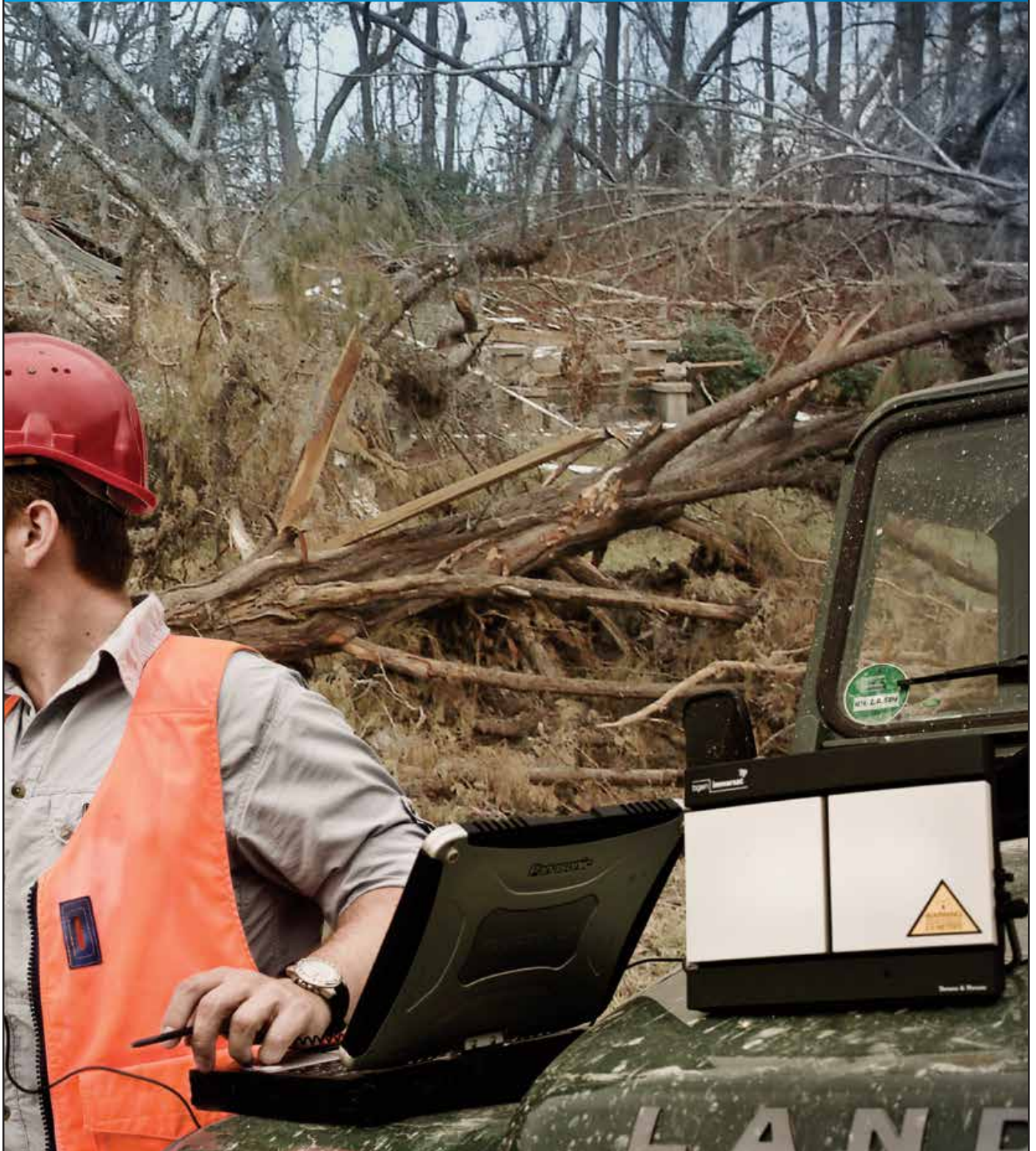
EXPLORER 300

Portable Inmarsat BGAN terminal

COBHAM

2013 Data Sheet

The most important thing we build is trust



EXPLORER 300

Portable Inmarsat BGAN terminal

COBHAM

Compact - for individual usage

EXPLORER 300 makes it easy to stay connected anywhere in the world. It is complete broadband connectivity the size of a netbook.

It is ideal for single travelers who frequently change location, consisting of only one unit – a transceiver with an integrated antenna.

The smallest BGAN terminal

The smallest terminal in the EXPLORER series. Weighs only 1.4 kg. Dimensions: 16.8 x 21.7 x 5.2 cm.

Single User terminal

The ideal combination of performance and portability. Provides simultaneous high quality voice and broadband access at speeds up to 464 kbps. It supports LAN, USB, Bluetooth and phone/fax interfaces.

Compact and lightweight

Ideal if you primarily need voice, or moderate speed standard IP internet access.



Specifications

Dimensions

Total H / W / D:	168 / 217 / 52 mm
	6.6 / 8.5 / 2.1 inches

Weight (incl. battery): 1.4kg / 3.1lbs

Data capabilities

Standard IP:	Up to 384 kbps
Streaming IP:	32, 64 kbps

Voice capabilities

Standard voice:	4 kbps
Premium voice:	3.1 kHz audio, 64 kbps

Text capabilities

SMS:	160 characters
------	----------------

Inmarsat frequencies: 1525.0 – 1559.0 MHz (Rx)
1626.5 – 1660.5 MHz (Tx)

EIRP: 10dBW ±1dB

LCD display: Graphical high resolution, back lit

User interface: Four navigation keys and powerbutton
Audio and LCD pointing aids. LED indicators. Thrane & Thrane web interface

Languages: UK, FR, DE, ES, RU and CN

Approvals: CE, FCC, GMPSC
Inmarsat Class 3 Type Approval

Where to buy:

Mackay Communications, Inc.
3691 Trust Drive
Raleigh, NC 27616 USA
Tel: 1-919-850-3100
Email: satserv@mackaycomm.com
www.mackaysatellite.com



www.mackaysatellite.com



Government buyers or contractors,
contact: government@mackaycomm.com
or 904-880-4633

Interfaces

1 x Analogue RJ-11 phone / fax interface

1 x Bluetooth interface (Version 1.2)

Antenna:	Integrated in transceiver unit
Frequencies:	2400.0 – 2483.5 MHz
Max. coverage outdoor:	25m / 82ft
Max. devices connected:	1 handset, 1 PC/PDA
Profiles supported:	Cordless handset, serial port, service discovery application, dial-up networking, headset
Standard:	Power class 2

1 x LAN interface

Connector type:	RJ-45, MDI-X
Data rate:	10/100 Mbps
Max. cable length:	100m / 328ft (Cat5 UTP)
Standard:	ISO/IEC 8877:1992, and IEEE 802.3 (1998 edition)

1 x BGAN SIM-Card slot

Environmental conditions

Temperature

Operational (ambient):	-25°C to +55°C / -13°F to +131°F
Storage (excl. battery):	-40°C to +80°C / -40°F to +176°F

Battery storage temperature

1 month:	-20°C / -4°F to +60°C / +140°F
3 months:	-20°C / -4°F to +45°C / +113°F
1 year:	-20°C / -4°F to +20°C / +68°F

Relative humidity: 95% non-condensing
at +40°C / +104°F

Robustness: 0.5 m / 1.64 ft drop on concrete
(operational, 95% survival)

Storage temperature: -40°C to +80°C (ex. battery)
-40°F to +176°F (ex. battery)

Water and dust: IP-54 (dust and spray proof)

Power

DC input range: 10-16VDC

Power consumption

Standby / transmit:	0.8W / 14W (typical)
During charging:	38W (max.)
Connector type	2.5mm EIAJ RC-5320-IV

AC/DC power supply

Input:	100-240VAC, 47-63Hz, 50W
Output:	15VDC

Battery:

Lithium ion (rechargeable)	
Stand-by time:	36h, 0°C / +32°F to 55°C / +131°F
Standard call:	3h, 0°C / +32°F to 55°C / +131°F
Premium voice call:	1h30m, 0°C / +32°F to 55°C / +131°F
Receive time, max.:	3h30m @ 128kbps, (25°C / 77°F)
Transmit time, max.:	2h15m @ 128kbps,
Min. number of charges:	300
Recharge time:	Less than 3 hours
Charge temperature:	0°C / +32°F to +45°C / +113°F

Other features

Phonebook; Fax; Message indicator; Traffic logging; Admin control (password protected); Webserver; Router or direct mode; Network Management; DHCP; Remote Management; Up to 11 x PDP context; Point-to-point Protocol over Ethernet (PPPoE).

Package

EXPLORER 300 terminal incl. rechargeable lithium ion battery
LAN cable and 100-240VAC power supply.
Getting started kit - Quick start guide, CD with manuals.

Product number

403705A-00700 EXPLORER 300 Terminal

For further information please contact:

Cobham SATCOM
Lundtoftegaardsvej 93 D
DK-2800 Kgs. Lyngby
Denmark
www.cobham.com
Tel: +45 3955 8800
Fax: +45 3955 8888

www.cobham.com