

TECHNICAL INFORMATION
FROM
MARINE SATELLITE COMMUNICATIONS GROUP

Subject : Information on new software SYS11.61 release for improvement of rollover occurring in the internal GPS receiver.

Equipment : JUE-500, Inmarsat FB500

Date : June 11, 2021

Issue Number : SC-0003-21



M. Akatsuka

Manager & Group Leader

Marine Satellite Communications Group

Marine Electronics Engineering Department

Marine System Division

Priority [] A: Carry out immediately
[X] B: Carry out at periodical inspection
[] C: Carry out upon client's request
[] D: Information and news

1. Subject

Information on new software SYS11.61 release for improvement of rollover occurring in the internal GPS receiver.

2. Objective Equipment

All JUE-500 BDEs except for those in the attached list "JUE-500 BDE serial numbers updated to SYS11.61".

3. Information and Notice

3.1. Information

- (1) Please be informed that new software SYS11.61 release for improvement of rollover that will occur in the internal GPS receiver on September 8, 2024. Make sure to update to the software at the next periodical inspection.

The following issues will be caused by the rollover:

- The date information in JUE-500 and the date recorded in variety of logs will go back 1024 weeks.
- Communication failure will occur due to registration processing failure to the Inmarsat network.

- (2) The new software SYS11.61 has improved the following functions:

- (a) Improved the issue that the date information in JUE-500 will go back 1024 weeks and communication failure will occur due to rollover that will occur in internal GPS receiver on September 8, 2024.
- (b) Improved the phenomenon that JUE-500 BDE cannot stop receiving the satellite carrier under specified condition during JUE-500 satellite searching.
- (c) Improved the phenomenon that when using SYS11.54, the DHCP count value (the number of IP addresses assigned by JUE-500) is always maximum value (254 - "BASE IP" + 1) even if user has changed it.
- (d) Improved the phenomenon that when using SYS11.54, Packet Detect Activate function always returns to disabled even if user has changed it to enabled.
- (e) Improved the phenomenon that when using the SIM card locked by PIN code, JUE-500 repeats satellite search (the terminal status repeats "SAT SEARCH" and "REGISTERING") under the following conditions:
 - When user enters the wrong PIN code at startup
 - When user leaves without entering the PIN code at startup
 - When JUE-500 starts satellite search

- (f) Improved that when JUE-500 receives the information with invalid position or date/time from the internal GPS receiver, JUE-500 treats it as information whose positioning status is UNFIX.
- (g) Improved that when the internal GPS receiver's positioning status changes from "2D FIX or 3D FIX" to "UNFIX or COLD START", JUE-500 displays the current date/time continuously without going back to the date/time when the GPS receiver's positioning status was last "2D FIX or 3D FIX".
- (h) Improved the phenomenon that "GPS Status" in Unit Info may show "2D FIX" or "3D FIX", even though JUE-500 cannot get valid GPS information and the status of JUE-500 is "POSITION?".
- (i) Improved the phenomenon that the phone connected to TEL3 to TEL6 port in may make a strange noise during a Voice call.
- (j) Improved the following phenomena that occur in OIU Web UI:
 - In [Packet Detect Activate] screen, even if the user changes the [Valid] value from OFF to ON, the user cannot input the value to the related [Base IP], [Count] and [Profile] setting boxes.
 - In [Always Activate] screen, even if the user changes the [Profile] value from Disable to Profile X, the user cannot input the value to the related [Local IP] setting boxes.
 - When the user clicks [8. SMS] from left menu panel to display the [SMS] screen, an internal error occurs.
 - The irrelevant value is filled in [Username] field or [Password] field in [Standard] screen etc. automatically due to the autocomplete feature of the browser.
 - The latest value is not output due to the cache of the browser when the file is output in [USER REGISTRATION] screen etc.
 - In [CALL LOG] screen or [USER REGISTRATION] screen, the items output to the file are different from the items displays on the screen.
- (k) Improve the phenomenon that ADE software update may fail due to the failure of reset IC implemented in ADE.

3.2. Request for updating the software

- (1) Update the software by using "JUE-500_11.61.exe".
- (2) Replace the JRC Launcher software with V2.0.5.0 by using "JRCLauncherV2_2.0.5.0.zip".

Notice

- Before updating software to SYS11.61, write down and record all the settings defined in both "SMS-Setting" and "ADMIN" menu on Handset and/or JRC Launcher. And then, after updating to SYS11.61, restore the settings by referring to those recorded before the update.
- Service type of TEL2 port will change to "Voice" setting after updating to SYS11.61 from SYS11.04-11.38. Confirm and set service type of TEL2 port properly according to the connected equipment (telephone or facsimile) after this update.
- Make sure to use JRC Launcher V2.0.5.0 for SYS11.61.
- Download the new JUE-500 Upgrader, JRC Launcher V2 and release note from the Marine Service Department homepage.
- Refer to the release note for updating procedure of the software.

J Q S - 2 1 7 0	X	様式 4 (4/4)
-----------------	---	------------

JQS-2170 [X] Form 4 (4/4)

4. Document attached

- JUE-500 SYS11.61 release note (7ZPSC0710)
- JUE-500 Software Version List
- JUE-500 BDE serial numbers updated to SYS11.61

5. Related Service-news and/or Technical Information

- FSN110014: Default service type setting of TEL2 port is set as “Voice” form SYS11.40

JRC FB 500 terminal JUE-500 new software ver. 11.61 release

JRC has released new software version: SYS11.61 for Fleet Broadband JUE-500 mobile terminals.
Please make sure to use JRC Launcher V2.0.5.0 with new SYS11.61.

Important Notice

Please make sure to update to the software SYS11.61 before rollover occurs in the internal GPS receiver on September 8, 2024. The following issues will be caused by the rollover:

- The date information in JUE-500 and the date recorded in variety of logs will go back 1024 weeks.
- Communication failure will occur due to registration processing failure to the Inmarsat network.

Notes for software update

- Before updating software to SYS11.61, write down and record all the settings defined in both “SMS-Setting” and “ADMIN” menu on Handset and/or JRC Launcher (Please use the setting list from page 20). After updating to SYS11.61, restore the settings by referring to those recorded before the update.
- Service type of TEL2 port will change to “Voice” setting after updating to SYS11.61. Confirm and set service type of TEL2 port properly according to the connected equipment (telephone or facsimile) after this update.
- Make sure to use JRC Launcher V2.0.5.0 for SYS11.61.

Changes from SYS11.54 to SYS11.61

Following item has been improved:

- Improved the issue that the date information in JUE-500 will go back 1024 weeks and communication failure will occur due to rollover that will occur in internal GPS receiver on September 8, 2024.
- Improved the phenomenon that JUE-500 BDE cannot stop receiving the satellite carrier under specified condition during JUE-500 satellite searching.
- Improved the phenomenon that when using SYS11.54, the DHCP count value (the number of IP addresses assigned by JUE-500) is always maximum value (254 - “BASE IP” + 1) even if user has changed it.
- Improved the phenomenon that when using SYS11.54, Packet Detect Activate function always returns to disabled even if user has changed it to enabled.

- Improved the phenomenon that when using the SIM card locked by PIN code, JUE-500 repeats satellite search (the terminal status repeats “SAT SEARCH” and “REGISTERING”) under the following conditions:
 - When user enters the wrong PIN code at startup
 - When user leaves without entering the PIN code at startup
 - When JUE-500 starts satellite search
- Improved that when JUE-500 receives the information with invalid position or date/time from the internal GPS receiver, JUE-500 treats it as information whose positioning status is UNFIX.
- Improved that when the internal GPS receiver’s positioning status changes from “2D FIX or 3D FIX” to “UNFIX or COLD START”, JUE-500 displays the current date/time continuously without going back to the date/time when the GPS receiver’s positioning status was last “2D FIX or 3D FIX”.
- Improved the phenomenon that “GPS Status” in Unit Info may show “2D FIX” or “3D FIX”, even though JUE-500 cannot get valid GPS information and the status of JUE-500 is “POSITION?”.
- Improved the phenomenon that the phone connected to TEL3 to TEL6 port in may make a strange noise during a Voice call.
- Improved the following phenomena that occur in OIU Web UI:
 - In [Packet Detect Activate] screen, even if the user changes the [Valid] value from OFF to ON, the user cannot input the value to the related [Base IP], [Count] and [Profile] setting boxes.
 - In [Always Activate] screen, even if the user changes the [Profile] value from Disable to Profile X, the user cannot input the value to the related [Local IP] setting boxes.
 - When the user clicks [8. SMS] from left menu panel to display the [SMS] screen, an internal error occurs.
 - The irrelevant value is filled in [Username] field or [Password] field in [Standard] screen etc. automatically due to the autocomplete feature of the browser.
 - The latest value is not output due to the cache of the browser when the file is output in [USER REGISTRATION] screen etc.
 - In [CALL LOG] screen or [USER REGISTRATION] screen, the items output to the file are different from the items displays on the screen.
- Improve the phenomenon that ADE software update may fail due to the failure of reset IC implemented in ADE.

Software updating procedure

Update JUE-500 software with following procedure a) to d).

* Do not connect any router or other equipment, only JUE-500 OIU is allowed to connect, between JUE-500 and a PC when updating JUE-500. Also, PC must be on the same network as JUE-500.

a). Confirm the connection

JUE-500 software updating is executed by a PC with dedicated application for PC.

Prepare a PC and connect it to your JUE-500. (For details, refer to “1. Confirm the connection”)

* Windows XP/Vista/7 OS is required.

b) Download the latest software for JUE-500

Confirm the website to check whether the latest software is uploaded or not, from the PC connected to Internet. Download if the latest software is uploaded. (For details, refer to “2. Downloading the latest software”)

c) Update JUE-500 software

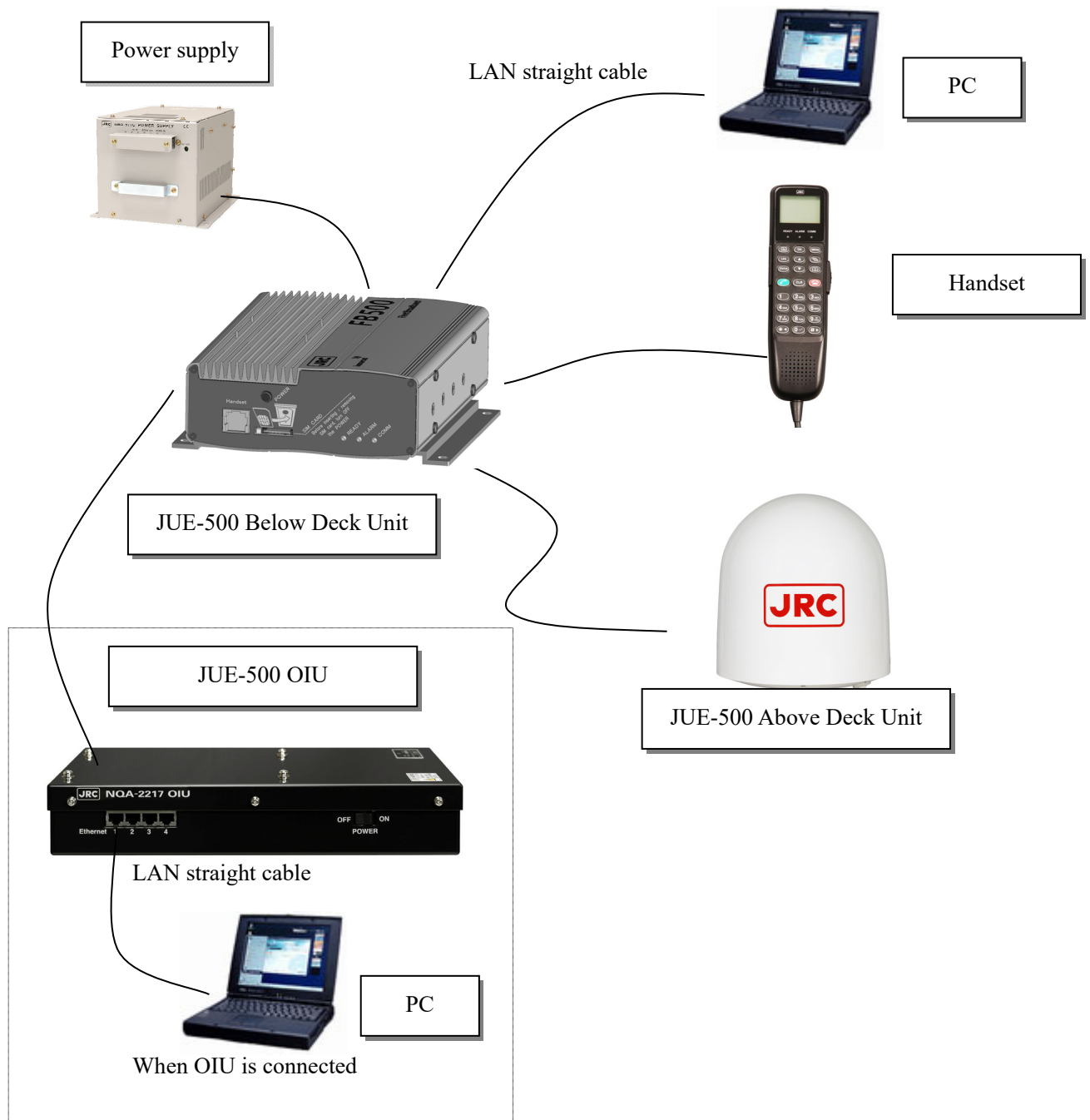
Update the JUE-500 software by the downloaded software. (For details, refer to “3. Update JUE-500 software”)

d) Confirm the updated software version

Confirm the software version after updating, to check that JUE-500 software is correctly updated or not. (For details, refer to “4. Confirm the update software version”)


1. Confirm the connection

1. Prepare a PC and connect it to Ethernet port of JUE-500, with LAN straight cable. When the OIU is connected to the BDE, connect LAN straight cable with the OIU's Ethernet port. * Do not connect any router or other equipment, only JUE-500 OIU is allowed to connect, between JUE-500 and a PC when updating JUE-500. Also, PC must be on the same network as JUE-500.

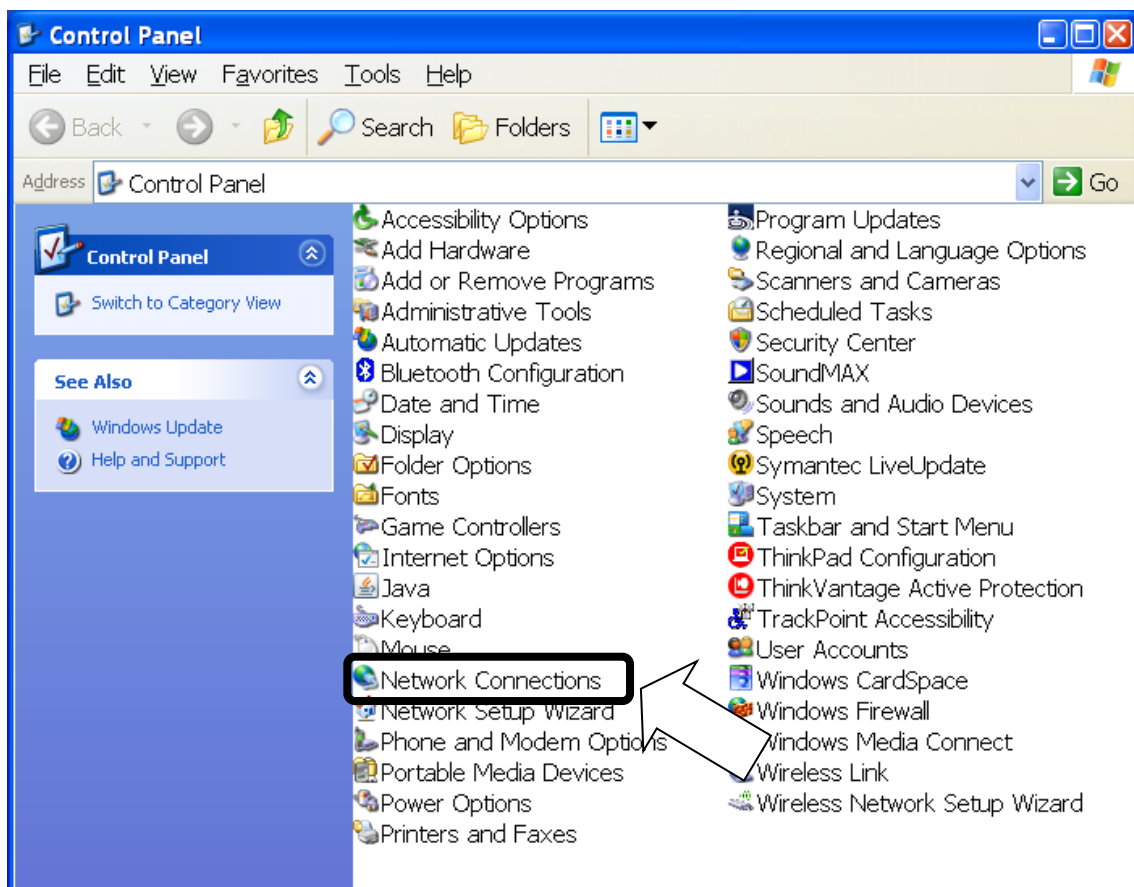


2. Set the LAN port IP address (being connected to Ethernet port of JUE-500) of your PC, to be on the same network as JUE-500 by the following procedure.

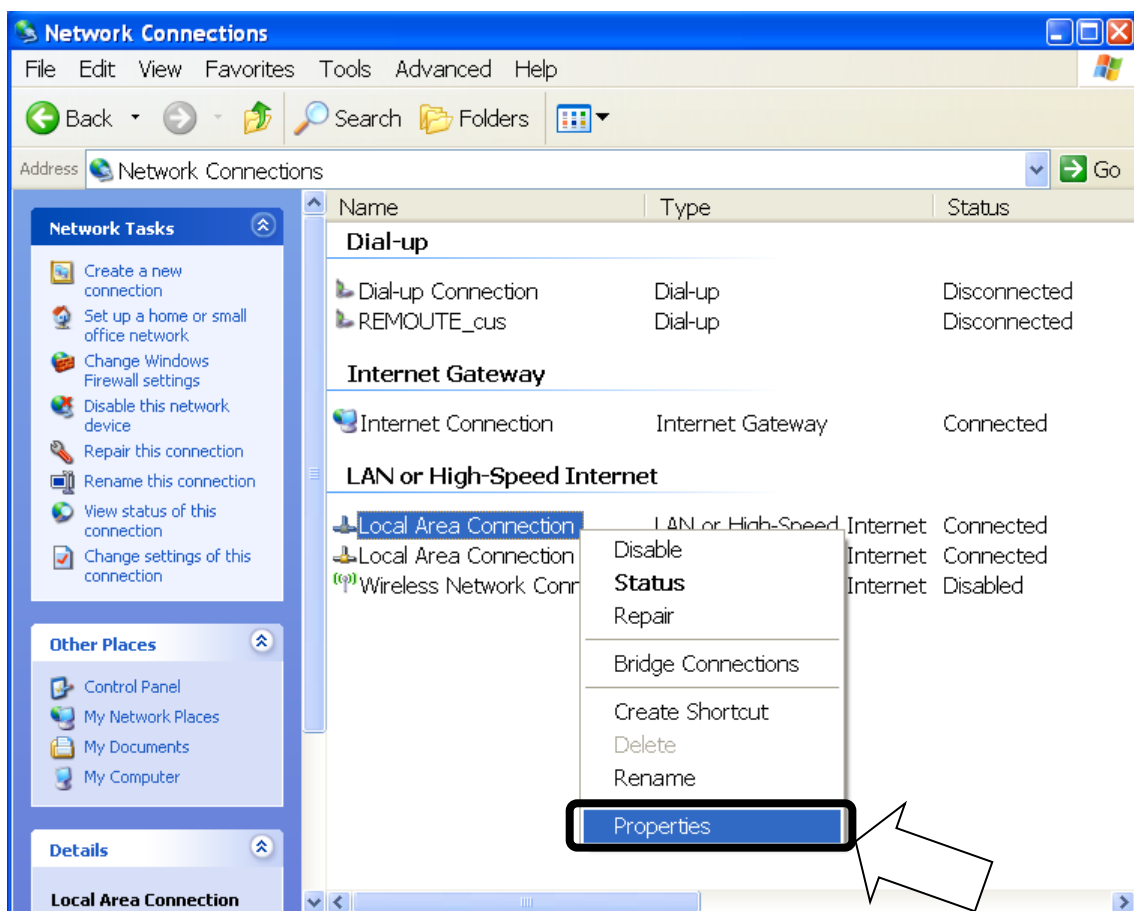
NOTE

- Skip this procedure when you have already set the LAN port to DHCP (set the IP address setting as [Obtain an IP address automatically]) and BDE's DHCP setting enable.
- Current BDE's DHCP setting can be referred at the Handset menu, <9> ADMIN - Input secret code (default value 0001) - <3> Port - <3> Ethernet - BDE's IP address (press OK) - BDE's subnet mask (press OK) - DHCP setting. Press  on hook button and close the menu after you confirm the DHCP setting.

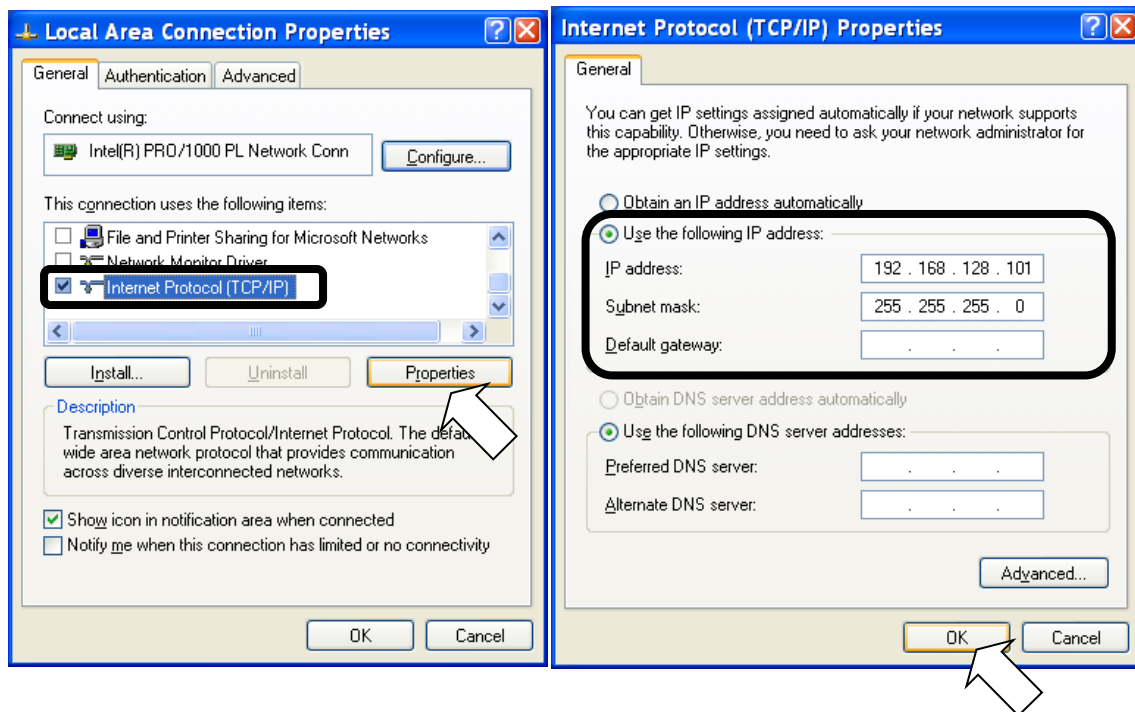
- i). Confirm BDE's IP address from the Handset.
 - BDE's DHCP setting can be referred at the Handset menu, <9> ADMIN - Input secret code (default value 0001) - <3> Port - <3> Ethernet.
- ii). Select [start]-[Control Panel].
 - [Control Panel] window is displayed.



- iii). Double click [Network Connections].
 - [Network Connections] window is displayed.
- iv). Select [Local Area Connection] and right-click, then click [Properties] from displayed menu.
 - [Local Area Connection Properties] dialogue box is displayed.
 - Confirm that [General] tab is displayed on the front of the screen.



- v). Select [Internet Protocol (TCP/IP)] and click [Properties] button.
 - [Internet Protocol (TCP/IP) Properties] dialogue box is displayed.
 - Select [Use the following IP address] and input [IP address] and [Subnet mask] to be on the same network as JUE-500. Do not input any IP address for [Default gateway].
 - e.g. When the BDE's IP address is 192.168.128.100
 - Input 192.168.128.101 for [IP address] and 255.255.255.0 for [Subnet mask].
 - Select [Use the following DNS server addresses] and do not input any DNS addresses for [Preferred DNS server] and [Alternate DNS server].



- vi). Click [OK] button.
 - Screen is returned to [Local Area Connection Properties] dialogue box.
- vii). Click [OK] button.
 - If message of rebooting is displayed, reboot a PC.

2. Downloading the latest software

The latest software of JUE-500 is uploaded on the HP of Inmarsat.

The URLs are as follows:

- Inmarsat

<https://www.inmarsat.com/en/support-and-info/support/fleetbroadband-firmware.html>

If the software's version on the HP is larger than the JUE-500's software version, download the software from HP.

Software version of JUE-500 can be displayed on the Handset screen with following operation:

<1> Status - <5> Unit Info - <2> Mainte No.- SYS

3. Update JUE-500 software

Note

- Do not turn OFF the power supply of JUE-500 and/or PC during the software forwarding or updating
- Software forwarding or updating takes up to 25 minutes.

1. Activate your JUE-500 and confirm that initialization is completed.
* [Initialize] is displayed during initialization on the Handset screen.

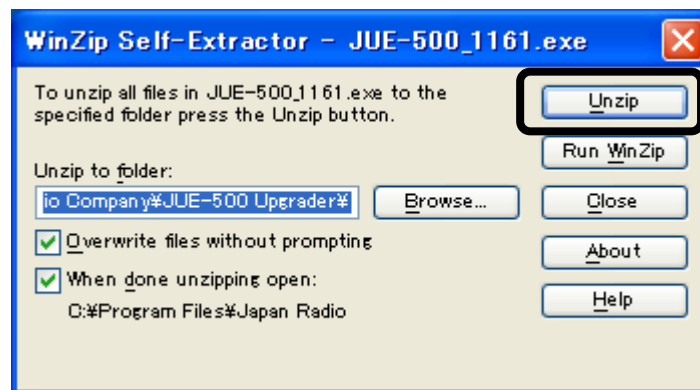


Initialize

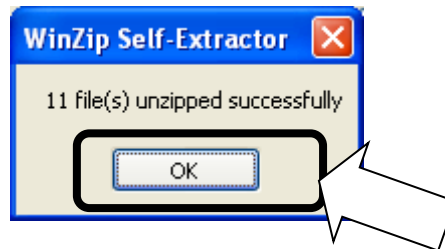
2. Execute the downloaded software file [JUE-500_1xxx.exe]. Double click the icon.



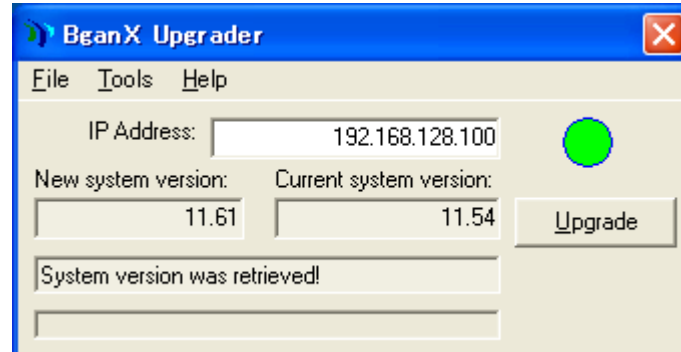
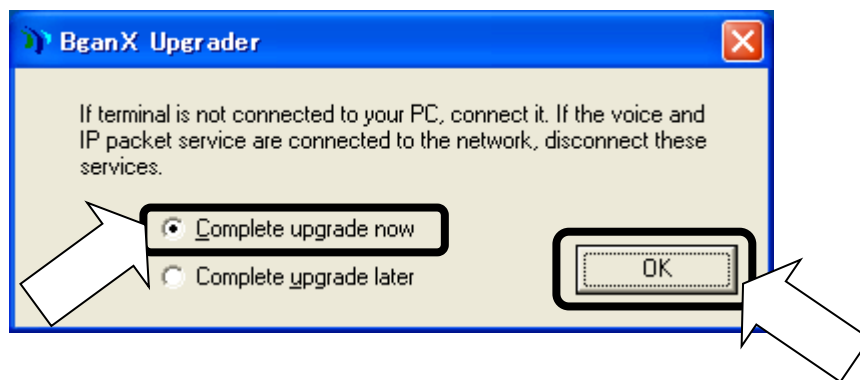
3. Following dialog box is displayed. Click [Unzip] button.
Default unzip folder is C:\Program Files\Japan Radio Company\JUE-500 Upgrader\.



4. Following dialog box is displayed. Click [OK] button.

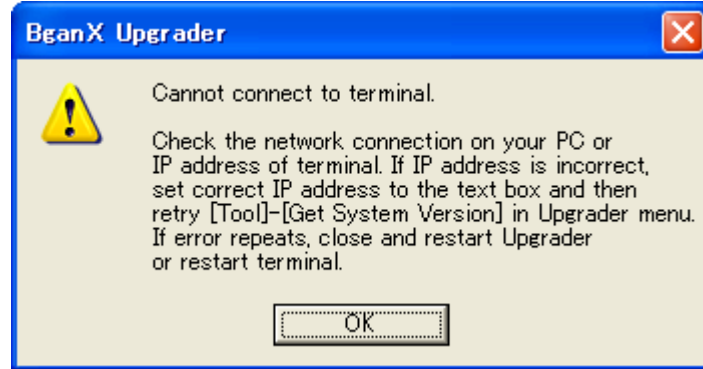


5. Select [Complete upgrade now] and click [OK] button. [BganX Upgrader] is activated.



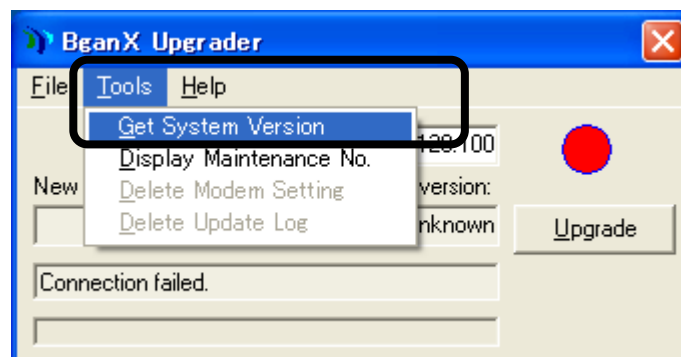
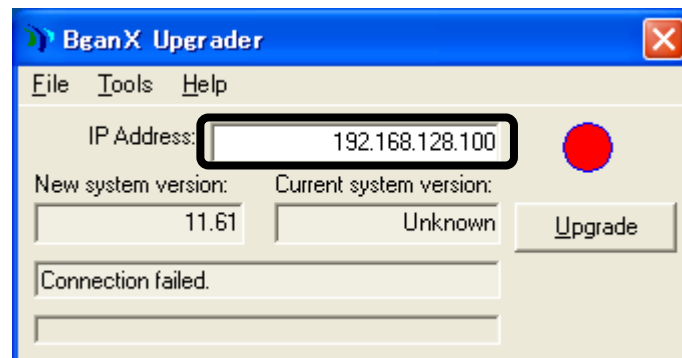
5.1. If the PC cannot connect with BDE

If your PC cannot connect with BDE, below screen is displayed.



In this case, assumed cause is the BDE's IP address is changed.

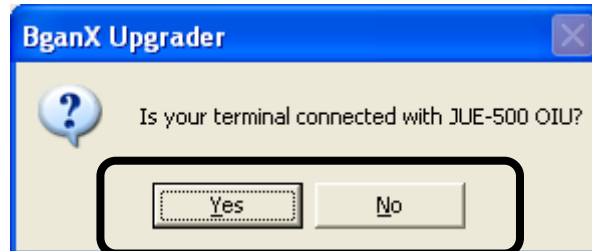
Set the current BDE's IP address into the textbox which displays below IP address, and then select [Tool] – [Get System Version] from Window's menu. Current BDE' IP address can be referred at the Handset menu, <9> ADMIN - Input secret code (default value 0001) - <3> Port - <3> Ethernet.



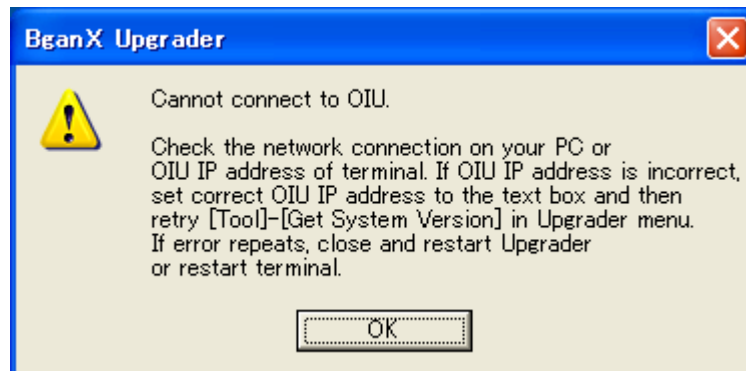
5.2. If the PC cannot connect with the OIU

If your PC cannot connected with the OIU, below screen is displayed.

Select [Yes] when the OIU is connected with BDE, and select [No] when the OIU is not connected with BDE.



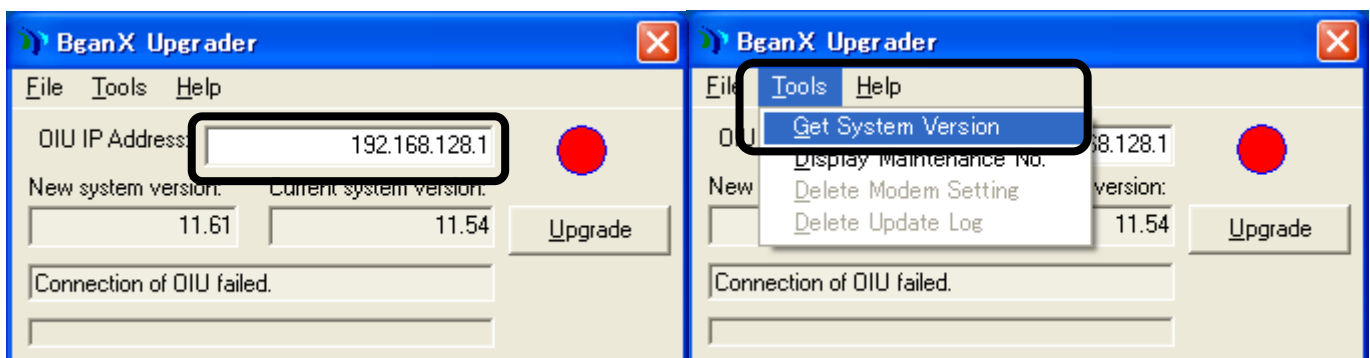
When [Yes] is selected, below screen is displayed.



In this case, assumed cause is the OIU's IP address is changed.

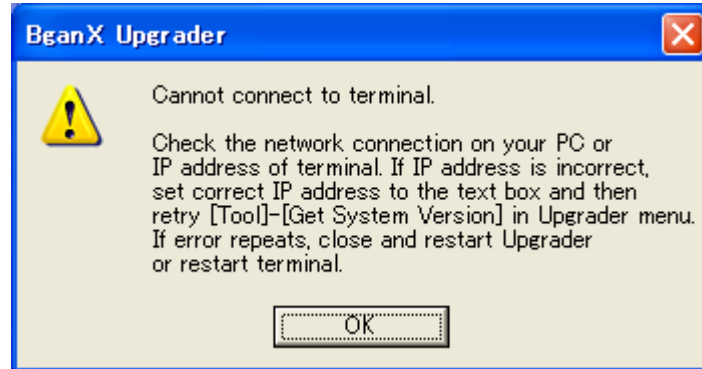
Set the current the OIU's IP address into the textbox which displays below IP address, and then select [Tool] – [Get System Version] from Window's menu

Current OIU's IP address can be referred at the Handset menu, <9> ADMIN - Input secret code (default value 0001) - <7> Option - <6> IP



5.3. If the PC cannot still connect with BDE after the BDE IP confirmation

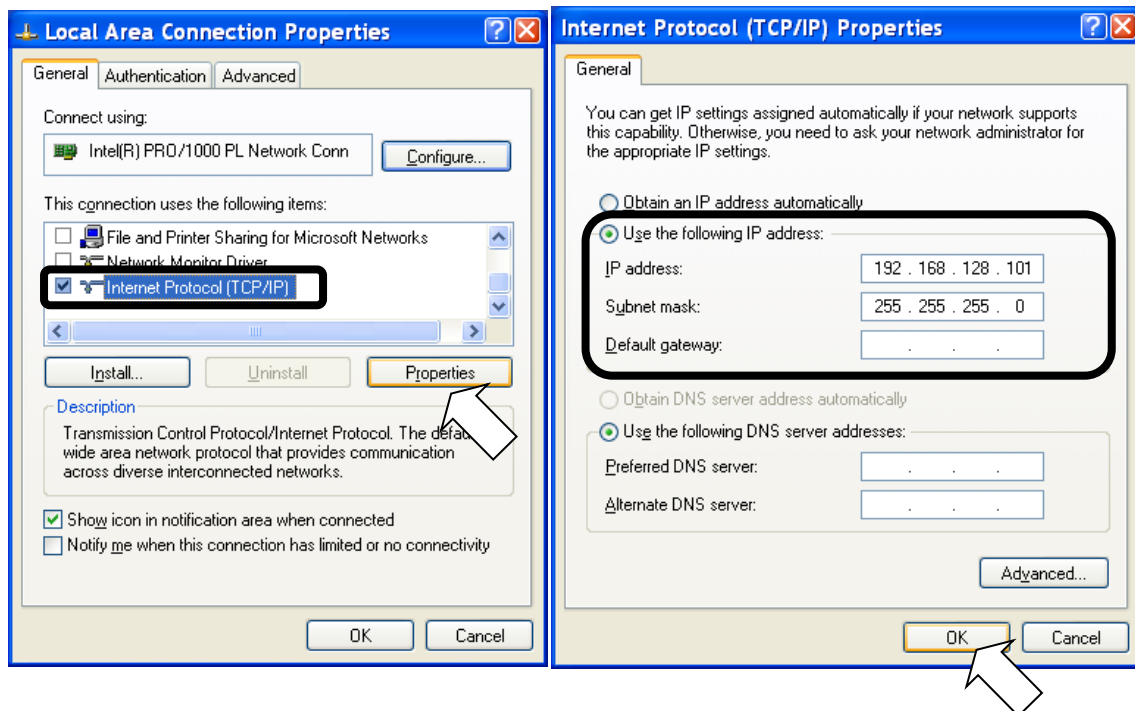
If your PC cannot connect with BDE after the BDE IP confirmation, below screen is displayed.



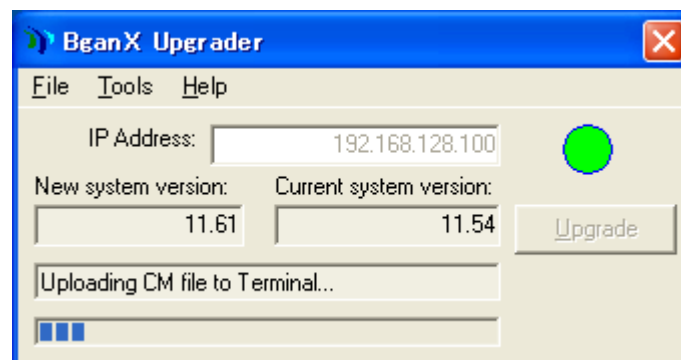
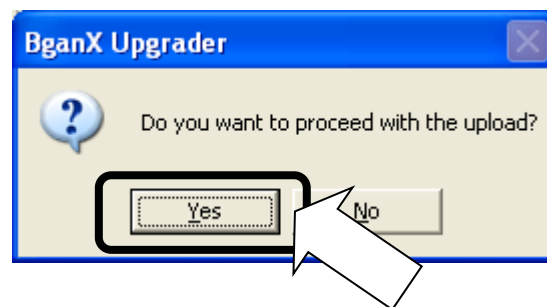
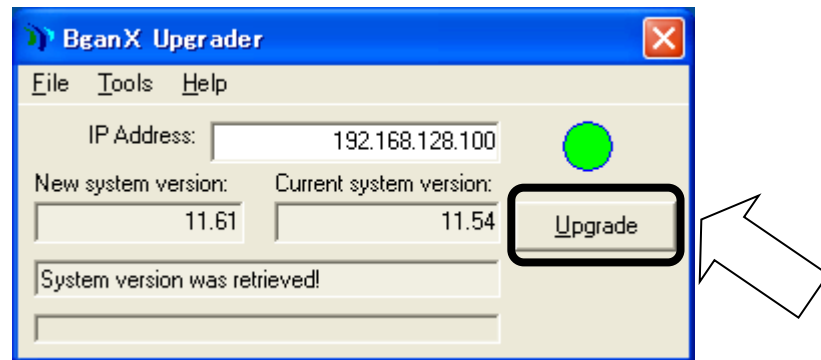
In this case, assumed cause is the PC's IP address is changed.

Confirm the PC's IP address is set to be on the same network as the BDE. Refer to "1. Confirm the connection" step (2) to confirm PC's IP address setting.

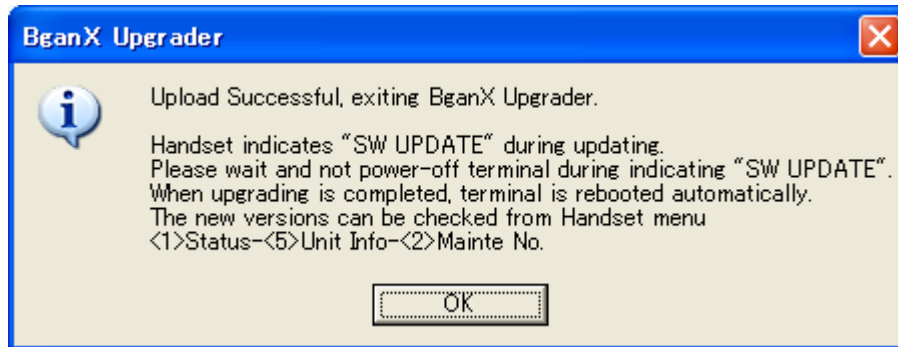
e.g. When the BDE's IP address is 192.168.128.100



6. [Upgrade] button turns to active when installation is ready. Click [Upgrade] button. After that, click [Yes] button in confirmation window. Forwarding of the file is started.



7. Following dialog box is displayed when file forwarding is completed. JUE-500 reboots automatically after several tens of seconds, and starts software updating.
Click [OK] button to close this dialog box.



8. [SW UPDATE] is displayed on the Handset screen during software updating.

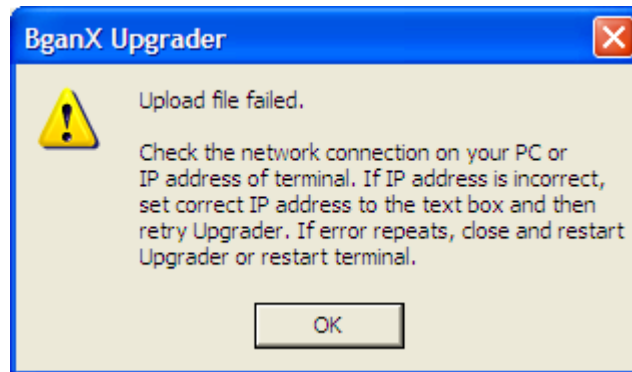


9. JUE-500 reboots when software updating is successfully completed.

9.1. When software update is failed

Update has failed when following message is generated.

- A) [Upload file failed] dialog box is displayed on the PC.



- B) [BDE Update Error] or [ADE Update Error] is displayed on the Handset screen.

BDE Update
Error X

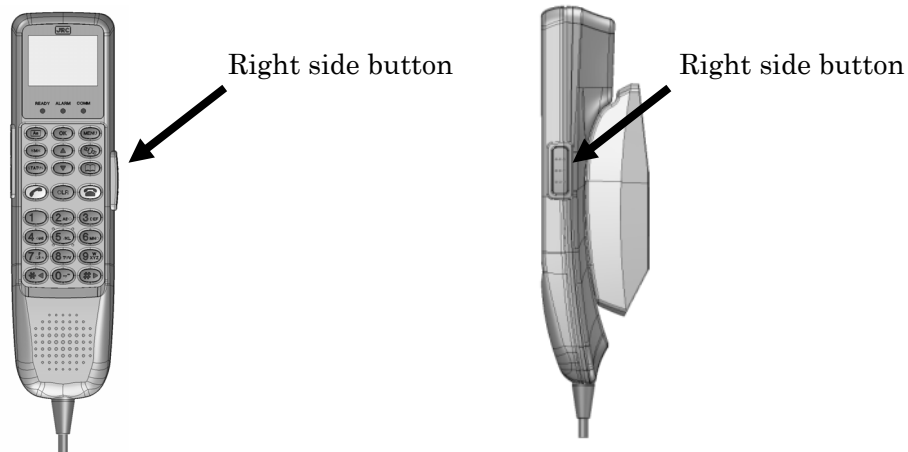
ADE Update
Error X

- C) Although the software is transferred and JUE-500 rebooted, updating is not completed even past 25 minutes or more since its start.

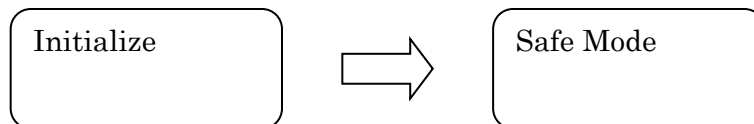
To improve the above error mentioned in a) to c), update again with referring to [Recovery procedure when software update is failed] (next page).

9.2. Recovery procedure when software update is failed

- A) Turn OFF the power supply of JUE-500.
- B) Quit [JUE-500 Upgrader], if it is still activating.
- C) Turn ON the power supply of JUE-500 with pressing the right side button of the Handset.



- D) Leave your finger from PTT button when Ready LED of BDE starts to blink.
- E) Confirm the Handset screen transition, it displays [Initialize] and [Safe Mode].

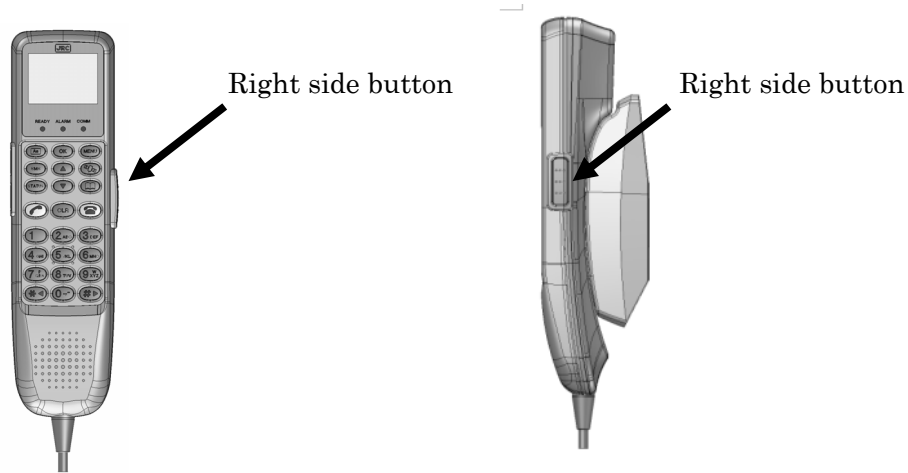


- F) Repeat from the 2nd procedure of [3 . Update JUE-500 software].

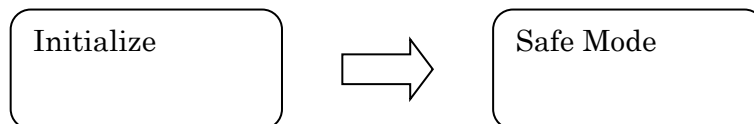
9.3. Software downgrading procedure

If you have any problems caused by upgrading, you can downgrade the software.

- A) Turn OFF the power supply of JUE-500.
- B) Quit [JUE-500 Upgrader], if it is still activating.
- C) Turn ON the power supply of JUE-500 with pressing the right side button of the Handset.



- D) Leave your finger from PTT button when Ready LED of BDE starts to blink.
- E) Confirm the Handset screen transition, it displays [Initialize] and [Safe Mode].



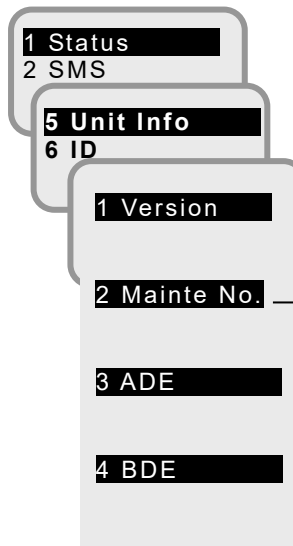
- F) Repeat from the 2nd procedure of [3 . Update JUE-500 software]. Use [JUE-500_1xxx.exe] in CD-ROM of JUE-500 to execute, instead of the downloaded file [JUE-500_1xxx.exe].

4. Confirm the updated software version

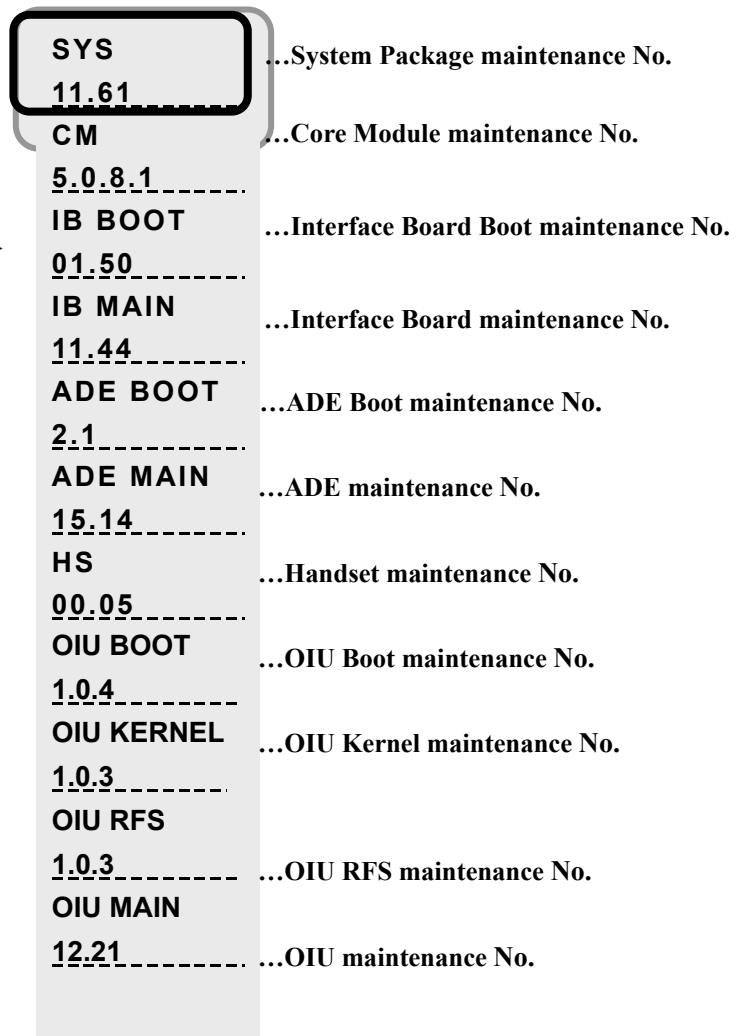
Check that the software version is correctly updated or not, from the following the Handset menu,
<1> Status - <5> Unit Info - <2> Mainte No. - SYS

When the update is succeeded, SYS No. is changed to the same number as the [1xxx] of the software file [JUE-500_1xxx.exe]

Unit Info menu screen



2. Mainte No. display screen



Setting List

Item	Default	Setting
SMS Service Center Address (SCA)	00870772001799	
SMS Validity	1 Day	
SMS Class	3	
SMS Send Status Report	OFF	
SMS Send Character Code	GSM7	
SMS Signature	OFF	
Delivery date	2007/01/01	
Time differences from UTC	+00:00	
Main unit LED ON/OFF	ON	
Selection of satellite tracking method	AUTO	
Use of Secret code for a call from Handset port	OFF	
Use of Secret code for a call from TEL1 port	OFF	
Use of Secret code for a call from TEL2 port	OFF	
Volume level of Handset port	NORMAL	
Volume level of TEL1 port	NORMAL	
Volume level of TEL2 port	NORMAL	
COMM TYPE of TEL1 port	VOICE	
COMM TYPE of TEL2 port	VOICE	
Call Request of Handset port	ON	
Call Request of TEL1 port	ON	
Call Request of TEL2 port	ON	
Call Reception of Handset port	ON	
Call Reception of TEL1 port	ON	
Call Reception of TEL2 port	ON	
Voice-MSN of ISDN	1	
Audio-MSN of ISDN	2	
UDI-MSN of ISDN	3	
RDI-MSN of ISDN	3	
Backlight dimmer of Handset	3	
Brightness of Handset LED lamps	3	
Ringer pattern of Handset	1	
Ringer volume of Handset	2	
Voice volume of Handset	2	
ON/OFF of key click sound of Handset	ON	
IP Address	192.168.128.100	
SUBNET MASK	255.255.255.0	
DHCP ON/OFF	ON (YES)	
Minimum allocation IP address for DHCP	192.168.128.101	
Total amount of allocatable IP address number	154	

Item		Default	Setting
USER REGISTRATION No.1	USER	ADMIN	
USER REGISTRATION No.1	CODE	0001	
USER REGISTRATION No.1	STANDARD	MANUAL	
USER REGISTRATION No.1	STREAMING	MANUAL	
USER REGISTRATION No.1	Single/Multi	SINGLE	
USER REGISTRATION No.2	USER	(empty)	
USER REGISTRATION No.2	CODE	(empty)	
USER REGISTRATION No.2	STANDARD	MANUAL	
USER REGISTRATION No.2	STREAMING	MANUAL	
USER REGISTRATION No.2	Single/Multi	SINGLE	
USER REGISTRATION No.3	USER	(empty)	
USER REGISTRATION No.3	CODE	(empty)	
USER REGISTRATION No.3	STANDARD	MANUAL	
USER REGISTRATION No.3	STREAMING	MANUAL	
USER REGISTRATION No.3	Single/Multi	SINGLE	
USER REGISTRATION No.4	USER	(empty)	
USER REGISTRATION No.4	CODE	(empty)	
USER REGISTRATION No.4	STANDARD	MANUAL	
USER REGISTRATION No.4	STREAMING	MANUAL	
USER REGISTRATION No.4	Single/Multi	SINGLE	
USER REGISTRATION No.5	USER	(empty)	
USER REGISTRATION No.5	CODE	(empty)	
USER REGISTRATION No.5	STANDARD	MANUAL	
USER REGISTRATION No.5	STREAMING	MANUAL	
USER REGISTRATION No.5	Single/Multi	SINGLE	
USER REGISTRATION No.6	USER	(empty)	
USER REGISTRATION No.6	CODE	(empty)	
USER REGISTRATION No.6	STANDARD	MANUAL	
USER REGISTRATION No.6	STREAMING	MANUAL	
USER REGISTRATION No.6	Single/Multi	SINGLE	
USER REGISTRATION No.7	USER	(empty)	
USER REGISTRATION No.7	CODE	(empty)	
USER REGISTRATION No.7	STANDARD	MANUAL	
USER REGISTRATION No.7	STREAMING	MANUAL	
USER REGISTRATION No.7	Single/Multi	SINGLE	
USER REGISTRATION No.8	USER	(empty)	
USER REGISTRATION No.8	CODE	(empty)	
USER REGISTRATION No.8	STANDARD	MANUAL	
USER REGISTRATION No.8	STREAMING	MANUAL	
USER REGISTRATION No.8	Single/Multi	SINGLE	
USER REGISTRATION No.9	USER	(empty)	
USER REGISTRATION No.9	CODE	(empty)	
USER REGISTRATION No.9	STANDARD	MANUAL	
USER REGISTRATION No.9	STREAMING	MANUAL	
USER REGISTRATION No.9	Single/Multi	SINGLE	

Item		Default	Setting
USER REGISTRATION No.10	USER	(empty)	
USER REGISTRATION No.10	CODE	(empty)	
USER REGISTRATION No.10	STANDARD	MANUAL	
USER REGISTRATION No.10	STREAMING	MANUAL	
USER REGISTRATION No.10	Single/Multi	SINGLE	
USER REGISTRATION No.11	USER	(empty)	
USER REGISTRATION No.11	CODE	(empty)	
USER REGISTRATION No.11	STANDARD	MANUAL	
USER REGISTRATION No.11	STREAMING	MANUAL	
USER REGISTRATION No.11	Single/Multi	SINGLE	
USER REGISTRATION No.12	USER	(empty)	
USER REGISTRATION No.12	CODE	(empty)	
USER REGISTRATION No.12	STANDARD	MANUAL	
USER REGISTRATION No.12	STREAMING	MANUAL	
USER REGISTRATION No.12	Single/Multi	SINGLE	
USER REGISTRATION No.13	USER	(empty)	
USER REGISTRATION No.13	CODE	(empty)	
USER REGISTRATION No.13	STANDARD	MANUAL	
USER REGISTRATION No.13	STREAMING	MANUAL	
USER REGISTRATION No.13	Single/Multi	SINGLE	
USER REGISTRATION No.14	USER	(empty)	
USER REGISTRATION No.14	CODE	(empty)	
USER REGISTRATION No.14	STANDARD	MANUAL	
USER REGISTRATION No.14	STREAMING	MANUAL	
USER REGISTRATION No.14	Single/Multi	SINGLE	
USER REGISTRATION No.15	USER	(empty)	
USER REGISTRATION No.15	CODE	(empty)	
USER REGISTRATION No.15	STANDARD	MANUAL	
USER REGISTRATION No.15	STREAMING	MANUAL	
USER REGISTRATION No.15	Single/Multi	SINGLE	
USER REGISTRATION No.16	USER	(empty)	
USER REGISTRATION No.16	CODE	(empty)	
USER REGISTRATION No.16	STANDARD	MANUAL	
USER REGISTRATION No.16	STREAMING	MANUAL	
USER REGISTRATION No.16	Single/Multi	SINGLE	
USER REGISTRATION No.17	USER	(empty)	
USER REGISTRATION No.17	CODE	(empty)	
USER REGISTRATION No.17	STANDARD	MANUAL	
USER REGISTRATION No.17	STREAMING	MANUAL	
USER REGISTRATION No.17	Single/Multi	SINGLE	
USER REGISTRATION No.18	USER	(empty)	
USER REGISTRATION No.18	CODE	(empty)	
USER REGISTRATION No.18	STANDARD	MANUAL	
USER REGISTRATION No.18	STREAMING	MANUAL	
USER REGISTRATION No.18	Single/Multi	SINGLE	
USER REGISTRATION No.19	USER	(empty)	
USER REGISTRATION No.19	CODE	(empty)	
USER REGISTRATION No.19	STANDARD	MANUAL	
USER REGISTRATION No.19	STREAMING	MANUAL	
USER REGISTRATION No.19	Single/Multi	SINGLE	

Item		Default	Setting
USER REGISTRATION No.20	USER	(empty)	
USER REGISTRATION No.20	CODE	(empty)	
USER REGISTRATION No.20	STANDARD	MANUAL	
USER REGISTRATION No.20	STREAMING	MANUAL	
USER REGISTRATION No.20	Single/Multi	SINGLE	
USER REGISTRATION No.21	USER	(empty)	
USER REGISTRATION No.21	CODE	(empty)	
USER REGISTRATION No.21	STANDARD	MANUAL	
USER REGISTRATION No.22	STREAMING	MANUAL	
USER REGISTRATION No.22	Single/Multi	SINGLE	
USER REGISTRATION No.22	USER	(empty)	
USER REGISTRATION No.22	CODE	(empty)	
USER REGISTRATION No.22	STANDARD	MANUAL	
USER REGISTRATION No.22	STREAMING	MANUAL	
USER REGISTRATION No.22	Single/Multi	SINGLE	
USER REGISTRATION No.23	USER	(empty)	
USER REGISTRATION No.23	CODE	(empty)	
USER REGISTRATION No.23	STANDARD	MANUAL	
USER REGISTRATION No.23	STREAMING	MANUAL	
USER REGISTRATION No.23	Single/Multi	SINGLE	
USER REGISTRATION No.21	USER	(empty)	
USER REGISTRATION No.24	CODE	(empty)	
USER REGISTRATION No.24	STANDARD	MANUAL	
USER REGISTRATION No.24	STREAMING	MANUAL	
USER REGISTRATION No.24	Single/Multi	SINGLE	
USER REGISTRATION No.25	USER	(empty)	
USER REGISTRATION No.25	CODE	(empty)	
USER REGISTRATION No.25	STANDARD	MANUAL	
USER REGISTRATION No.25	STREAMING	MANUAL	
USER REGISTRATION No.25	Single/Multi	SINGLE	
USER REGISTRATION No.26	USER	(empty)	
USER REGISTRATION No.26	CODE	(empty)	
USER REGISTRATION No.26	STANDARD	MANUAL	
USER REGISTRATION No.26	STREAMING	MANUAL	
USER REGISTRATION No.26	Single/Multi	SINGLE	
USER REGISTRATION No.27	USER	(empty)	
USER REGISTRATION No.27	CODE	(empty)	
USER REGISTRATION No.27	STANDARD	MANUAL	
USER REGISTRATION No.27	STREAMING	MANUAL	
USER REGISTRATION No.27	Single/Multi	SINGLE	
USER REGISTRATION No.28	USER	(empty)	
USER REGISTRATION No.28	CODE	(empty)	
USER REGISTRATION No.28	STANDARD	MANUAL	
USER REGISTRATION No.28	STREAMING	MANUAL	
USER REGISTRATION No.28	Single/Multi	SINGLE	
USER REGISTRATION No.29	USER	(empty)	
USER REGISTRATION No.29	CODE	(empty)	
USER REGISTRATION No.29	STANDARD	MANUAL	
USER REGISTRATION No.29	STREAMING	MANUAL	
USER REGISTRATION No.29	Single/Multi	SINGLE	

Item		Default	Setting
USER REGISTRATION No.30	USER	(empty)	
USER REGISTRATION No.30	CODE	(empty)	
USER REGISTRATION No.30	STANDARD	MANUAL	
USER REGISTRATION No.30	STREAMING	MANUAL	
USER REGISTRATION No.30	Single/Multi	SINGLE	
USER REGISTRATION No.31	USER	(empty)	
USER REGISTRATION No.31	CODE	(empty)	
USER REGISTRATION No.31	STANDARD	MANUAL	
USER REGISTRATION No.31	STREAMING	MANUAL	
USER REGISTRATION No.31	Single/Multi	SINGLE	
USER REGISTRATION No.32	USER	(empty)	
USER REGISTRATION No.32	CODE	(empty)	
USER REGISTRATION No.32	STANDARD	MANUAL	
USER REGISTRATION No.32	STREAMING	MANUAL	
USER REGISTRATION No.32	Single/Multi	SINGLE	
USER REGISTRATION No.33	USER	(empty)	
USER REGISTRATION No.33	CODE	(empty)	
USER REGISTRATION No.33	STANDARD	MANUAL	
USER REGISTRATION No.33	STREAMING	MANUAL	
USER REGISTRATION No.33	Single/Multi	SINGLE	
USER REGISTRATION No.34	USER	(empty)	
USER REGISTRATION No.34	CODE	(empty)	
USER REGISTRATION No.34	STANDARD	MANUAL	
USER REGISTRATION No.34	STREAMING	MANUAL	
USER REGISTRATION No.34	Single/Multi	SINGLE	
USER REGISTRATION No.35	USER	(empty)	
USER REGISTRATION No.35	CODE	(empty)	
USER REGISTRATION No.35	STANDARD	MANUAL	
USER REGISTRATION No.35	STREAMING	MANUAL	
USER REGISTRATION No.35	Single/Multi	SINGLE	
USER REGISTRATION No.36	USER	(empty)	
USER REGISTRATION No.36	CODE	(empty)	
USER REGISTRATION No.36	STANDARD	MANUAL	
USER REGISTRATION No.36	STREAMING	MANUAL	
USER REGISTRATION No.36	Single/Multi	SINGLE	
USER REGISTRATION No.37	USER	(empty)	
USER REGISTRATION No.37	CODE	(empty)	
USER REGISTRATION No.37	STANDARD	MANUAL	
USER REGISTRATION No.37	STREAMING	MANUAL	
USER REGISTRATION No.37	Single/Multi	SINGLE	
USER REGISTRATION No.38	USER	(empty)	
USER REGISTRATION No.38	CODE	(empty)	
USER REGISTRATION No.38	STANDARD	MANUAL	
USER REGISTRATION No.38	STREAMING	MANUAL	
USER REGISTRATION No.38	Single/Multi	SINGLE	
USER REGISTRATION No.39	USER	(empty)	
USER REGISTRATION No.39	CODE	(empty)	
USER REGISTRATION No.39	STANDARD	MANUAL	
USER REGISTRATION No.39	STREAMING	MANUAL	
USER REGISTRATION No.39	Single/Multi	SINGLE	

Item		Default	Setting
USER REGISTRATION No.40	USER	(empty)	
USER REGISTRATION No.40	CODE	(empty)	
USER REGISTRATION No.40	STANDARD	MANUAL	
USER REGISTRATION No.40	STREAMING	MANUAL	
USER REGISTRATION No.40	Single/Multi	SINGLE	
USER REGISTRATION No.41	USER	(empty)	
USER REGISTRATION No.41	CODE	(empty)	
USER REGISTRATION No.41	STANDARD	MANUAL	
USER REGISTRATION No.41	STREAMING	MANUAL	
USER REGISTRATION No.41	Single/Multi	SINGLE	
USER REGISTRATION No.42	USER	(empty)	
USER REGISTRATION No.42	CODE	(empty)	
USER REGISTRATION No.42	STANDARD	MANUAL	
USER REGISTRATION No.42	STREAMING	MANUAL	
USER REGISTRATION No.42	Single/Multi	SINGLE	
USER REGISTRATION No.43	USER	(empty)	
USER REGISTRATION No.43	CODE	(empty)	
USER REGISTRATION No.43	STANDARD	MANUAL	
USER REGISTRATION No.43	STREAMING	MANUAL	
USER REGISTRATION No.43	Single/Multi	SINGLE	
USER REGISTRATION No.44	USER	(empty)	
USER REGISTRATION No.44	CODE	(empty)	
USER REGISTRATION No.44	STANDARD	MANUAL	
USER REGISTRATION No.44	STREAMING	MANUAL	
USER REGISTRATION No.44	Single/Multi	SINGLE	
USER REGISTRATION No.45	USER	(empty)	
USER REGISTRATION No.45	CODE	(empty)	
USER REGISTRATION No.45	STANDARD	MANUAL	
USER REGISTRATION No.45	STREAMING	MANUAL	
USER REGISTRATION No.45	Single/Multi	SINGLE	
USER REGISTRATION No.46	USER	(empty)	
USER REGISTRATION No.46	CODE	(empty)	
USER REGISTRATION No.46	STANDARD	MANUAL	
USER REGISTRATION No.46	STREAMING	MANUAL	
USER REGISTRATION No.46	Single/Multi	SINGLE	
USER REGISTRATION No.47	USER	(empty)	
USER REGISTRATION No.47	CODE	(empty)	
USER REGISTRATION No.47	STANDARD	MANUAL	
USER REGISTRATION No.47	STREAMING	MANUAL	
USER REGISTRATION No.47	Single/Multi	SINGLE	
USER REGISTRATION No.48	USER	(empty)	
USER REGISTRATION No.48	CODE	(empty)	
USER REGISTRATION No.48	STANDARD	MANUAL	
USER REGISTRATION No.48	STREAMING	MANUAL	
USER REGISTRATION No.48	Single/Multi	SINGLE	
USER REGISTRATION No.49	USER	(empty)	
USER REGISTRATION No.49	CODE	(empty)	
USER REGISTRATION No.49	STANDARD	MANUAL	
USER REGISTRATION No.49	STREAMING	MANUAL	
USER REGISTRATION No.49	Single/Multi	SINGLE	
USER REGISTRATION No.50	USER	(empty)	
USER REGISTRATION No.50	CODE	(empty)	
USER REGISTRATION No.50	STANDARD	MANUAL	
USER REGISTRATION No.50	STREAMING	MANUAL	
USER REGISTRATION No.50	Single/Multi	SINGLE	

Item	Default	Setting
Maximum connecting time of Handset port (Auto DCN.)	0 (unlimited)	
Maximum connecting time of TEL1 port (Auto DCN.)	0 (unlimited)	
Maximum connecting time of TEL2 port (Auto DCN.)	0 (unlimited)	
Maximum connecting time of ISDN port (Auto DCN.)	0 (unlimited)	
Maximum connecting time of STREAMING communication port (USB/Ethernet) (Auto DCN.)	0 (unlimited)	
Maximum Idle connecting time of STANDARD communication port (USB/Ethernet) (Auto DCN.)	OFF (unlimited)	
Setting of SIM PIN	Depend on SIM	
PIN input operation ON/OFF	Depend on SIM	
APN Profile Profile 1 Name	Profile 1	
APN Profile Profile 1 APN setting	SIM default	
APN Profile Profile 1 APN	(empty)	
APN Profile Profile 1 User	(empty)	
APN Profile Profile 1 Pass	(empty)	
APN Profile Profile 1 Global IP setting	Dynamic	
APN Profile Profile 1 Global IP address	(empty)	
APN Profile Profile 2 Name	Profile 2	
APN Profile Profile 2 APN setting	SIM default	
APN Profile Profile 2 APN	(empty)	
APN Profile Profile 2 User	(empty)	
APN Profile Profile 2 Pass	(empty)	
APN Profile Profile 2 Global IP setting	Dynamic	
APN Profile Profile 2 Global IP address	(empty)	
APN Profile Profile 3 Name	Profile 3	
APN Profile Profile 3 APN setting	SIM default	
APN Profile Profile 3 APN	(empty)	
APN Profile Profile 3 User	(empty)	
APN Profile Profile 3 Pass	(empty)	
APN Profile Profile 3 Global IP setting	Dynamic	
APN Profile Profile 3 Global IP address	(empty)	
APN Profile Profile 4 Name	Profile 4	
APN Profile Profile 4 APN setting	SIM default	
APN Profile Profile 4 APN	(empty)	
APN Profile Profile 4 User	(empty)	
APN Profile Profile 4 Pass	(empty)	
APN Profile Profile 4 Global IP setting	Dynamic	
APN Profile Profile 4 Global IP address	(empty)	
APN Profile Profile 5 Name	Profile 5	
APN Profile Profile 5 APN setting	SIM default	
APN Profile Profile 5 APN	(empty)	
APN Profile Profile 5 User	(empty)	
APN Profile Profile 5 Pass	(empty)	
APN Profile Profile 5 Global IP setting	Dynamic	
APN Profile Profile 5 Global IP address	(empty)	

Item		Default	Setting
Packet Filter No.1	Priority	(empty)	
Packet Filter No.1	Action	Pass	
Packet Filter No.1	Direction	Outgoing	
Packet Filter No.1	Protocol	ALL	
Packet Filter No.1	Destination IP	(empty)	
Packet Filter No.1	Destination Port range	(empty)	
Packet Filter No.1	Source IP	(empty)	
Packet Filter No.1	Source Port range	(empty)	
Packet Filter No.2	Priority	(empty)	
Packet Filter No.2	Action	Pass	
Packet Filter No.2	Direction	Outgoing	
Packet Filter No.2	Protocol	ALL	
Packet Filter No.2	Destination IP	(empty)	
Packet Filter No.2	Destination Port range	(empty)	
Packet Filter No.2	Source IP	(empty)	
Packet Filter No.2	Source Port range	(empty)	
Packet Filter No.3	Priority	(empty)	
Packet Filter No.3	Action	Pass	
Packet Filter No.3	Direction	Outgoing	
Packet Filter No.3	Protocol	ALL	
Packet Filter No.3	Destination IP	(empty)	
Packet Filter No.3	Destination Port range	(empty)	
Packet Filter No.3	Source IP	(empty)	
Packet Filter No.3	Source Port range	(empty)	
Packet Filter No.4	Priority	(empty)	
Packet Filter No.4	Action	Pass	
Packet Filter No.4	Direction	Outgoing	
Packet Filter No.4	Protocol	ALL	
Packet Filter No.4	Destination IP	(empty)	
Packet Filter No.4	Destination Port range	(empty)	
Packet Filter No.4	Source IP	(empty)	
Packet Filter No.4	Source Port range	(empty)	
Packet Filter No.5	Priority	(empty)	
Packet Filter No.5	Action	Pass	
Packet Filter No.5	Direction	Outgoing	
Packet Filter No.5	Protocol	ALL	
Packet Filter No.5	Destination IP	(empty)	
Packet Filter No.5	Destination Port range	(empty)	
Packet Filter No.5	Source IP	(empty)	
Packet Filter No.5	Source Port range	(empty)	
Packet Filter No.6	Priority	(empty)	
Packet Filter No.6	Action	Pass	
Packet Filter No.6	Direction	Outgoing	
Packet Filter No.6	Protocol	ALL	
Packet Filter No.6	Destination IP	(empty)	
Packet Filter No.6	Destination Port range	(empty)	
Packet Filter No.6	Source IP	(empty)	
Packet Filter No.6	Source Port range	(empty)	
Packet Filter No.7	Priority	(empty)	
Packet Filter No.7	Action	Pass	
Packet Filter No.7	Direction	Outgoing	
Packet Filter No.7	Protocol	ALL	
Packet Filter No.7	Destination IP	(empty)	
Packet Filter No.7	Destination Port range	(empty)	
Packet Filter No.7	Source IP	(empty)	
Packet Filter No.7	Source Port range	(empty)	

Item	Default	Setting
Packet Filter No.8 Priority	(empty)	
Packet Filter No.8 Action	Pass	
Packet Filter No.8 Direction	Outgoing	
Packet Filter No.8 Protocol	ALL	
Packet Filter No.8 Destination IP	(empty)	
Packet Filter No.8 Destination Port range	(empty)	
Packet Filter No.8 Source IP	(empty)	
Packet Filter No.8 Source Port range	(empty)	
Packet Filter No.9 Priority	(empty)	
Packet Filter No.9 Action	Pass	
Packet Filter No.9 Direction	Outgoing	
Packet Filter No.9 Protocol	ALL	
Packet Filter No.9 Destination IP	(empty)	
Packet Filter No.9 Destination Port range	(empty)	
Packet Filter No.9 Source IP	(empty)	
Packet Filter No.9 Source Port range	(empty)	
Packet Filter No.10 Priority	(empty)	
Packet Filter No.10 Action	Pass	
Packet Filter No.10 Direction	Outgoing	
Packet Filter No.10 Protocol	ALL	
Packet Filter No.10 Destination IP	(empty)	
Packet Filter No.10 Destination Port range	(empty)	
Packet Filter No.10 Source IP	(empty)	
Packet Filter No.10 Source Port range	(empty)	
Packet Filter No.11 Priority	(empty)	
Packet Filter No.11 Action	Pass	
Packet Filter No.11 Direction	Outgoing	
Packet Filter No.11 Protocol	ALL	
Packet Filter No.11 Destination IP	(empty)	
Packet Filter No.11 Destination Port range	(empty)	
Packet Filter No.11 Source IP	(empty)	
Packet Filter No.11 Source Port range	(empty)	
Packet Filter No.12 Priority	(empty)	
Packet Filter No.12 Action	Pass	
Packet Filter No.12 Direction	Outgoing	
Packet Filter No.12 Protocol	ALL	
Packet Filter No.12 Destination IP	(empty)	
Packet Filter No.12 Destination Port range	(empty)	
Packet Filter No.12 Source IP	(empty)	
Packet Filter No.12 Source Port range	(empty)	
Packet Filter No.13 Priority	(empty)	
Packet Filter No.13 Action	Pass	
Packet Filter No.13 Direction	Outgoing	
Packet Filter No.13 Protocol	ALL	
Packet Filter No.13 Destination IP	(empty)	
Packet Filter No.13 Destination Port range	(empty)	
Packet Filter No.13 Source IP	(empty)	
Packet Filter No.13 Source Port range	(empty)	
Packet Filter No.14 Priority	(empty)	
Packet Filter No.14 Action	Pass	
Packet Filter No.14 Direction	Outgoing	
Packet Filter No.14 Protocol	ALL	
Packet Filter No.14 Destination IP	(empty)	
Packet Filter No.14 Destination Port range	(empty)	
Packet Filter No.14 Source IP	(empty)	
Packet Filter No.14 Source Port range	(empty)	

Item		Default	Setting
Packet Filter No.15	Priority	(empty)	
Packet Filter No.15	Action	Pass	
Packet Filter No.15	Direction	Outgoing	
Packet Filter No.15	Protocol	ALL	
Packet Filter No.15	Destination IP	(empty)	
Packet Filter No.15	Destination Port range	(empty)	
Packet Filter No.15	Source IP	(empty)	
Packet Filter No.15	Source Port range	(empty)	
Packet Filter No.16	Priority	(empty)	
Packet Filter No.16	Action	Pass	
Packet Filter No.16	Direction	Outgoing	
Packet Filter No.16	Protocol	ALL	
Packet Filter No.16	Destination IP	(empty)	
Packet Filter No.16	Destination Port range	(empty)	
Packet Filter No.16	Source IP	(empty)	
Packet Filter No.16	Source Port range	(empty)	
Packet Filter No.17	Priority	(empty)	
Packet Filter No.17	Action	Pass	
Packet Filter No.17	Direction	Outgoing	
Packet Filter No.17	Protocol	ALL	
Packet Filter No.17	Destination IP	(empty)	
Packet Filter No.17	Destination Port range	(empty)	
Packet Filter No.17	Source IP	(empty)	
Packet Filter No.17	Source Port range	(empty)	
Packet Filter No.18	Priority	(empty)	
Packet Filter No.18	Action	Pass	
Packet Filter No.18	Direction	Outgoing	
Packet Filter No.18	Protocol	ALL	
Packet Filter No.18	Destination IP	(empty)	
Packet Filter No.18	Destination Port range	(empty)	
Packet Filter No.18	Source IP	(empty)	
Packet Filter No.18	Source Port range	(empty)	
Packet Filter No.19	Priority	(empty)	
Packet Filter No.19	Action	Pass	
Packet Filter No.19	Direction	Outgoing	
Packet Filter No.19	Protocol	ALL	
Packet Filter No.19	Destination IP	(empty)	
Packet Filter No.19	Destination Port range	(empty)	
Packet Filter No.19	Source IP	(empty)	
Packet Filter No.19	Source Port range	(empty)	
Packet Filter No.20	Priority	(empty)	
Packet Filter No.20	Action	Pass	
Packet Filter No.20	Direction	Outgoing	
Packet Filter No.20	Protocol	ALL	
Packet Filter No.20	Destination IP	(empty)	
Packet Filter No.20	Destination Port range	(empty)	
Packet Filter No.20	Source IP	(empty)	
Packet Filter No.20	Source Port range	(empty)	

Item		Default	Setting
Packet detection activate No.1	Disable / Enable	Disable (unchecked)	
Packet detection activate No.1	Base IP	192.168.128.101	
Packet detection activate No.1	Count	1	
Packet detection activate No.1	Profile	Profile 1	
Packet detection activate No.2	Disable / Enable	Disable (unchecked)	
Packet detection activate No.2	Base IP	192.168.128.101	
Packet detection activate No.2	Count	1	
Packet detection activate No.2	Profile	Profile 1	
Packet detection activate No.3	Disable / Enable	Disable (unchecked)	
Packet detection activate No.3	Base IP	192.168.128.101	
Packet detection activate No.3	Count	1	
Packet detection activate No.3	Profile	Profile 1	
Packet detection activate No.4	Disable / Enable	Disable (unchecked)	
Packet detection activate No.4	Base IP	192.168.128.101	
Packet detection activate No.4	Count	1	
Packet detection activate No.4	Profile	Profile 1	
Packet detection activate No.5	Disable / Enable	Disable (unchecked)	
Packet detection activate No.5	Base IP	192.168.128.101	
Packet detection activate No.5	Count	1	
Packet detection activate No.5	Profile	Profile 1	
Packet detection activate No.6	Disable / Enable	Disable (unchecked)	
Packet detection activate No.6	Base IP	192.168.128.101	
Packet detection activate No.6	Count	1	
Packet detection activate No.6	Profile	Profile 1	
Always activate Setting 1	Profile	Disable	
Always activate Setting 1	Local IP	0.0.0.0	
Always activate Setting 2	Profile	Disable	
Always activate Setting 2	Local IP	0.0.0.0	
Always activate Setting 3	Profile	Disable	
Always activate Setting 4	Local IP	0.0.0.0	

When you are using OIU:

Item	Default	Setting
Use of Secret code for a call from TEL3 port	OFF	
Use of Secret code for a call from TEL4 port	OFF	
Use of Secret code for a call from TEL5 port	OFF	
Use of Secret code for a call from TEL6 port	OFF	
Volume level of TEL3 port	NORMAL	
Volume level of TEL4 port	NORMAL	
Volume level of TEL5 port	NORMAL	
Volume level of TEL6 port	NORMAL	
COMM TYPE of TEL3 port	VOICE	
COMM TYPE of TEL4 port	VOICE	
COMM TYPE of TEL5 port	VOICE	
COMM TYPE of TEL6 port	VOICE	
Call Request of TEL3 port	ON	
Call Request of TEL4 port	ON	
Call Request of TEL5 port	ON	
Call Request of TEL6 port	ON	
Call Reception of TEL3 port	ON	
Call Reception of TEL4 port	ON	
Call Reception of TEL5 port	ON	
Call Reception of TEL6 port	ON	
Maximum connecting time of TEL3 port (Auto DCN.)	0 (unlimited)	
Maximum connecting time of TEL4 port (Auto DCN.)	0 (unlimited)	
Maximum connecting time of TEL5 port (Auto DCN.)	0 (unlimited)	
Maximum connecting time of TEL6 port (Auto DCN.)	0 (unlimited)	
Voice setting of Buzzer1 port	ON	
Voice setting of Buzzer2 port	ON	
Voice setting of Buzzer3 port	ON	
Voice setting of Buzzer4 port	ON	
Audio setting of Buzzer1 port	ON	
Audio setting of Buzzer2 port	ON	
Audio setting of Buzzer3 port	ON	
Audio setting of Buzzer4 port	ON	
UDI setting of Buzzer1 port	ON	
UDI setting of Buzzer2 port	ON	
UDI setting of Buzzer3 port	ON	
UDI setting of Buzzer4 port	ON	
RDI setting of Buzzer1 port	ON	
RDI setting of Buzzer2 port	ON	
RDI setting of Buzzer3 port	ON	
RDI setting of Buzzer4 port	ON	
ExtGPS	OFF	
Diagnostic	OFF	
OIU IP	192168128001	
OIU SUBNET MASK	2552552550	

Inmarsat FB500 JUE-500 Software Version List (1/3)

No.	SYS Ver.	Maintenance No.		Modification		
12	11.61	CM	5.0.8.1	(1)Improved the phenomenon that JUE-500 BDE cannot stop receiving the satellite carrier under specified condition during JUE-500 satellite searching.		
				(2)Improved the phenomenon that when using SYS11.54, the DHCP count value (the number of IP addresses assigned by JUE-500) is always maximum value (254 – “BASE IP” + 1) even if user has changed it.		
				(3)Improved the phenomenon that when using SYS11.54, Packet Detect Activate function always returns to disabled even if user has changed it to enabled.		
		IB	BOOT	01.50	No change	
			MAIN	11.44	(1)Improved the issue that the date information in JUE-500 will go back 1024 weeks and communication failure will occur due to rollover that will occur in internal GPS receiver on September 8, 2024.	
					(2)Improved the phenomenon that JUE-500 BDE cannot stop receiving the satellite carrier under specified condition during JUE-500 satellite searching.	
					(3)Improved the phenomenon that when using the SIM card locked by PIN code, JUE-500 repeats satellite search (the terminal status repeats “SAT SEARCH” and “REGISTERING”) under the following conditions: – When user enters the wrong PIN code at startup – When user leaves without entering the PIN code at startup – When JUE-500 starts satellite search	
					(4)Improved that when JUE-500 receives the information with invalid position or date/time from the internal GPS receiver, JUE-500 treats it as information whose positioning status is UNFIX.	
					(5)Improved that when the internal GPS receiver’s positioning status changes from “2D FIX or 3D FIX” to “UNFIX or COLD START”, JUE-500 displays the current date/time continuously without going back to the date/time when the GPS receiver’s positioning status was last “2D FIX or 3D FIX”.	
					(6)Improved the phenomenon that “GPS Status2 in Unit Info may show “2D FIX” or “3D FIX”, even though JUE-500 cannot get valid GPS information and the status of JUE-500 is “POSITION?”.	
					(7)Improve the phenomenon that ADE software update may fail due to the failure of reset IC implemented in ADE.	
			ADE	BOOT	2.1	No change
			MAIN	15.14	No change	
		OIU	BOOT	1.0.4/1.0.5	No change	
			KERNEL	1.0.3	No change	
			RFS	1.0.3	No change	
			MAIN	12.21	(1)Improved the phenomenon that the phone connected to TEL3 to TEL6 port in may make a strange noise during a Voice call.	
(2)Improved the following phenomena that occur in OIU Web UI: – In [Packet Detect Activate] screen, even if the user changes the [Valid] value from OFF to ON, the user cannot input the value to the related [Base IP], [Count] and [Profile] setting boxes. – In [Always Activate] screen, even if the user changes the [Profile] value from Disable to Profile X, the user cannot input the value to the related [Local IP] setting boxes. – When the user clicks [8. SMS] from left menu panel to display the [SMS] screen, an internal error occurs. – The irrelevant value is filled in [Username] field or [Password] field in [Standard] screen etc. automatically due to the autocomplete feature of the browser. – The latest value is not output due to the cache of the browser when the file is output in [USER REGISTRATION] screen etc. – In [CALL LOG] screen or [USER REGISTRATION] screen, the items output to the file are different from the items displays on the screen.						
11	11.54	CM	5.0.8.0	(1)Supported MEAS (Middle East and Asia) satellite		
		IB	BOOT	01.50	No change	
			MAIN	11.41	(1)Supported MEAS (Middle East and Asia) satellite	
		ADE	BOOT	2.1	No change	
			MAIN	15.14	(1)Supported MEAS (Middle East and Asia) satellite	
		OIU	BOOT	1.0.4/1.0.5	No change	
			KERNEL	1.0.3	No change	
			RFS	1.0.3	No change	
MAIN	12.19		(1)Supported MEAS (Middle East and Asia) satellite			
10	11.44	CM	5.0.5.1	(1) Improved an issue in which TCP connection becomes impossible in rare case under special conditions		
		IB	BOOT	01.50	No change	
			MAIN	11.37	(1) Added Handset functions for incoming calls	
		ADE	BOOT	2.1	No change	
			MAIN	15.12	No change	
		OIU	BOOT	1.0.4/1.0.5	No change	
			KERNEL	1.0.3	No change	
			RFS	1.0.3	No change	
MAIN	12.17		No change			

Inmarsat FB500 JUE-500 Software Version List (2/3)

No.	SYS Ver.	Maintenance No.		Modification
9	11.42	CM	5.0.5.0	(1)Improved a stability of PS communication under heavy load
		IB	BOOT 01.50	No change
			MAIN 11.35	(1)Added one more IHSIGACQ retry command: up to 6 IHSIGACQ requests with 2sec interval
		ADE	BOOT 2.1	No change
			MAIN 15.12	No change
		OIU	BOOT 1.0.4/1.0.5	No change
			KERNEL 1.0.3	No change
			RFS 1.0.3	No change
			MAIN 12.17	No change
8	11.41	CM	5.0.4.4	(1)Improved satellite search failure caused after terminal shutdown failure (2)Supported Inmarsat Service Aware Charging and Control (SACC)
		IB	BOOT 01.50	No change
			MAIN 11.33	No change
		ADE	BOOT 2.1	No change
			MAIN 15.12	No change
		OIU	BOOT 1.0.4/1.0.5	(1)Supported to use new flash: JS28F128J3F75
			KERNEL 1.0.3	No change
			RFS 1.0.3	No change
			MAIN 12.17	No change
7	11.40	CM	5.0.4.3	(1)Improved the usability of JRC Launcher V2 in NAT router connected network. (2)Added "Packet Detection Activate" function.
		IB	BOOT 01.50	No change
			MAIN 11.33	(1)Improved the usability of JRC Launcher V2 in NAT router connected network.
				(2)Added "Always Activate" function.
				(3)Added "Packet Detection Activate" function.
				(4)Changed default service type setting of TEL2 port to "Voice" from "FAX".
				(5)Changed the specification to keep Standard IP Connection at the time when re-satellite search is caused by blockage.
		ADE	BOOT 2.1	No change
			MAIN 15.12	No change
6	11.38	CM	5.0.4.2	(1)Improved unexpected Safe Mode start-up caused by internal packet counter value overflow.
				(2)Added auto disconnection function for Standard IP connection.
				(3)Added packet filtering function.
				(4)Changed the Ring Back Tone timing for voice/fax originating call.
				(5)Added function to return the terminal settings to default settings by executing FLASH Clear.
		IB	BOOT 01.50	No change
			MAIN 11.32	(1)Improved the GPS alarm detection issue after repeating "SAT SEARCH" and "REGISTERING" by using defective transmission unit or non activated SIM.
				(2)Added Service Type "BOTH" for receiving both voice and fax call to the same TEL port.
				(3)Added auto disconnection function for Standard IP connection.
				(4)Added APN Profile registration function.
		ADE	12.14	(5)Added packet filtering function.
				(6)Added function to disable or restrict PS communication to each user.
				(7)Added function to return the terminal settings to default settings by executing FLASH Clear.
		OIU	12.14	(1)Improved the communication failure between shore PC and ships equipment connected via OIU LAN port(e.g. BDE, VDR) when using OIU's Remote Access Server(RAS) by 64K-UDI(ISDN).
				(2)Added Service Type "BOTH" for receiving both voice and fax call to the same TEL port.
				(3)Added auto disconnection function for Standard IP connection.
				(4)Added APN Profile registration function.

Inmarsat FB500 JUE-500 Software Version List (3/3)

No.	SYS Ver.	Maintenance No.		Modification			
5	11.34	CM		5.0.3.7	No change		
		IB	BOOT	01.50	No change		
			MAIN	11.28	No change		
		ADE	BOOT	2.1	No change		
			MAIN	15.12	Improved the communication failure caused by repeating the satellite search in the vicinity right under the satellite (elevation 85 degrees or more).This trouble doesn't occur when GYRO is connected.		
		OIU	BOOT	1.0.4	No change		
			KERNEL	1.0.3	No change		
			RFS	1.0.3	No change		
			MAIN	12.10	No change		
4	11.33	CM		5.0.3.7	(1)Addition of the control function for JRC Launcher V2 (2)Improve of temporary decrease display in the PIN input limitation number (3)Improve the undefined state reply of AT+CGACT?		
		IB	BOOT	01.50	No change		
			MAIN	11.28	(1)Addition of the control function for JRC Launcher V2 (2)Improved the occasional irregular reboot		
		ADE	BOOT	2.1	No change		
			MAIN	15.11	No change		
		OIU	BOOT	1.0.4	No change		
			KERNEL	1.0.3	No change		
			RFS	1.0.3	No change		
			MAIN	12.10	(1)Improved the APN readout issue in OIU Web (2)Improved the Packet Connection/SMS operating issue in OIU Web (3)Improved the mismatch of the default value of VDR settings (4)Improved to clear the call log correctly (5)Changed the ROUTE TABLE manner of operation		
		3	11.30	CM		5.0.3.6	(1)Improved the Narrow beam handover issue. (2)Improved the packet communication failure which occurred under the VoIP system. (3)Improved the filtering of the Traffic Flow Template function. (4)Changed the default value of the DHCP lease timer which will allocate after the PS connection. (5)Support for the change of IP address field to Class A or B private IP address. (6)Support for the change of subnet mask field. (7)Added the DHCP server setting in DHCP allocation range setting function.
IB	BOOT			01.50	No change		
	MAIN			11.26	(1)Displays the satellite name: AMER, EMEA or APAC on the Handset LCD. (2)Support for the change of IP address field to Class A or B private IP address. (3)Support for the change of subnet mask field. (4)Added the DHCP server setting in DHCP allocation range setting function. (5)Added QoS: 8K and 16K in the call log screen for the 8kbps and 16kbps Streaming connection.		
ADE	BOOT			2.1	No change		
	MAIN			15.11	(1)Improved the ADE control error detection occurred in GYRO mode.		
OIU	BOOT			1.0.4	No change		
	KERNEL			1.0.3	No change		
	RFS			1.0.3	No change		
	MAIN			12.08	(1)Support the sort of the call log on the OIU WEB. (2)Added the display of QoS and OIU WEB pull down mane for the 8kbps and 16kbps Streaming connection. (3)Changed the VDR IP address setting from 192.168.60.3 (JRC LAN) to 192.168.128.254 (User LAN), which is for the output of JUE-500 Alarms for the VDR via LAN.		
2	11.27			CM		5.0.3.3	(1)Correction of satellite map management for satellite repositioning. (2)Improved the satellite tracking problem that the receiving level is lost in particular area (180W- (3)Support for the USIM PIN function. (4)Improved communications stability in case of blocage by shadowing. (5>User-selectable enable or disable DHCP and configurable IP address. (6)Reduce echo on voice phone call.
				IB	BOOT	01.50	No change
		MAIN	11.23		(1)Improved FAX communications stability.		
		ADE	BOOT	2.1	No change		
			MAIN	15.10	(1)Improved the issue of EIRP display		
		OIU	BOOT	1.0.4	Initial release		
			KERNEL	1.0.3	Initial release		
			RFS	1.0.3	Initial release		
			MAIN	12.06	Initial release		
1	11.03	CM		5.0.2.8	Initial release		
		IB	BOOT	01.50	Initial release		
			MAIN	11.06	Initial release		
		ADE	BOOT	2.1	Initial release		
			MAIN	15.08	Initial release		

JUE-500 BDE serial numbers updated to SYS11.61

GSC-502

GV21678
GV21679

GSC-502-1

GV18848	GV91205	GV91259
GV21259	GV91206	GV91260
GV21673	GV91208	GV91261
GV21676	GV91211	GV91262
GV91160	GV91212	GV91263
GV91161	GV91213	GV91264
GV91162	GV91215	GV91265
GV91163	GV91217	GV91266
GV91164	GV91218	GV91267
GV91165	GV91220	GV91268
GV91166	GV91221	GV91269
GV91167	GV91222	GV91270
GV91168	GV91223	GV91271
GV91169	GV91224	GV91272
GV91170	GV91225	GV91273
GV91171	GV91226	GV91274
GV91172	GV91227	GV91275
GV91173	GV91228	GV91276
GV91174	GV91229	GV91277
GV91175	GV91230	GV91278
GV91176	GV91231	GV91279
GV91177	GV91232	GV91280
GV91178	GV91236	GV91281
GV91179	GV91238	GV91284
GV91180	GV91242	
GV91181	GV91244	
GV91182	GV91245	
GV91183	GV91246	
GV91185	GV91247	
GV91186	GV91248	
GV91187	GV91249	
GV91188	GV91250	
GV91189	GV91251	
GV91195	GV91252	
GV91197	GV91253	
GV91198	GV91254	
GV91200	GV91255	
GV91202	GV91256	
GV91203	GV91257	
GV91204	GV91258	