



MARINE ASSET TRACKER 2.0

Real-time satellite tracking and mobile optimised fleet management software for workboat, fishing vessel and offshore operators.

Marine Asset Tracker (MAT) 2.0 is an integrated satellite communications and software solution that enables operators of workboats, barges, rigs, support vessels, commercial fishing boats and unpowered assets to monitor their fleets accurately and reliably.

By offering a range of SkyWave and Globalstar tracking devices that are fully integrated with Pole Star's web-based software solution, MAT allows you to monitor your entire fleet in a single, global view.

The MAT software solution is web-based and mobile optimised so that you can manage your fleet from your desktop, laptop, tablet, smartphone or any internet-enabled device. Event-based notifications by email or SMS keep you informed, even when you are not logged in.

Key Benefits

Convenient

- Manage your fleet from your desktop, laptop, smartphone or tablet device
- Real-time and historical tracking
- IsatData Pro and Globalstar hardware integration options
- Interactive maps and weather overlays
- Automatic and on-demand position reporting
- Event-based notifications by email or SMS, wherever you are

Cost effective

- Flexible service plans
- Unlimited user logins

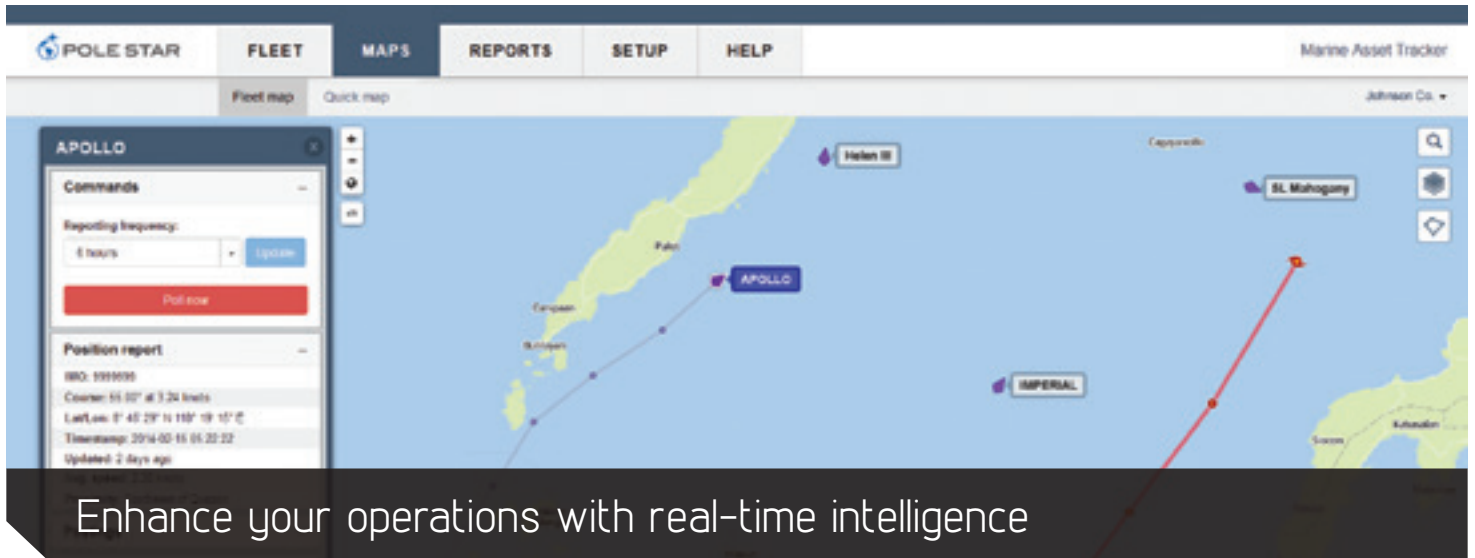
Control

- Download and share reports
- Control user permissions

Where to Buy: **Mackay Communications, Inc.**
 3691 Trust Drive
 Raleigh, NC 27616 USA
 Tel: 1-919-850-3100
 Email: satserv@mackaycomm.com
www.mackaysatellite.com
www.mackaymarine.com

Mackay Marine
 Division of Mackay Communications
 Tel: 281-479-1515
MarineSales@mackaycomm.com

Government buyers or contractors, contact:
government@mackaycomm.com or 904-880-4633



Manage Your Fleet

With your entire fleet visible in a single view, MAT gives you the information you need to operate your fleet efficiently and effectively. Combining interactive full-screen maps with weather overlays, fleet list, vessel search and locate functionality, a new user-interface plus real-time, on-demand and variable position reporting, MAT is the complete monitoring solution for operators of tugs & barges, support vessels, fishing vessels and other workboats, as well as rigs, “dead” tows and unattended installations.

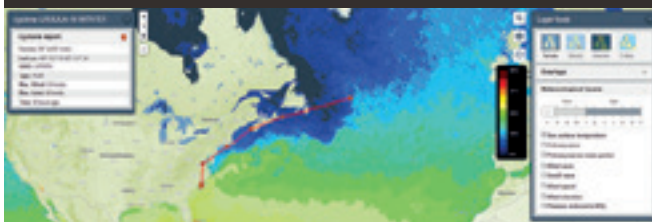
Available Anywhere

MAT is mobile optimised so that you can manage your fleet from your desktop, laptop, tablet, smartphone or any internet-enabled device.



Event-based notifications by email or SMS keep you informed, even when you are not logged in.

Four Map Options with Weather Layers



Maps

Choose from street, hybrid and satellite maps from Mapbox plus C-Map marine charts.

Weather

MAT offers high-quality graphical weather forecast layers so that you can monitor sea conditions and improve safety and efficiency.

Weather layers include:

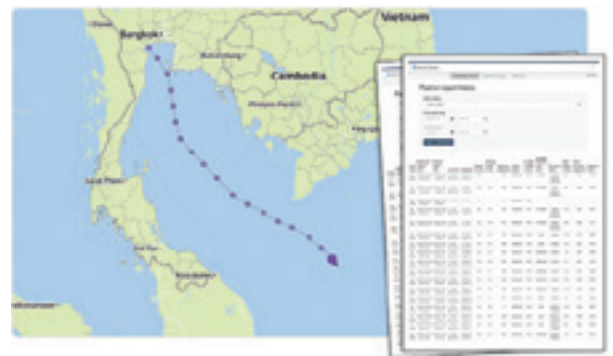
- Cyclones
- Pressure
- Sea surface temperature
- Wind speed and direction
- Wind and swell wave height
- Primary wave direction

Weather provided by Tidetch Applied Oceanography. Weather forecast data is updated every 12 hours.

Low Cost Solution

With MAT, you can choose the hardware and rate plan that meets the needs of each asset in your fleet. From real-time reporting for workboats and fishing vessels, to low frequency reporting for barges and other low-speed assets, plus automatic reduced-rate reporting while stationary, MAT gives you the right information at the right price for your fleet.*

*Options and rate plans may vary dependent on hardware selection



Compliance Reporting & Evidence

Go back in time and examine the movements of an asset at a specific moment in the past. Download, view, analyse and share current and historical tracking data with your colleagues or for use in arbitration.

Ideal For:

WORKBOATS	OFFSHORE OIL & GAS	COMMERCIAL FISHING
		
<p>MAT for workboats is a web-based tracking solution that integrates low-maintenance tracking devices for powered and unpowered assets, enhancing operational awareness at a low monthly cost.</p>	<p>MAT addresses the unique needs of the offshore oil & gas industry by combining turnkey, mobile-optimised tracking software with integrated tracking devices, delivering operational awareness at a great value price.</p>	<p>Fishing vessel operators face difficult economic and environmental conditions on a daily basis. That is why MAT offers you rugged tracking devices, real-time tracking, and accurate weather forecasts, all at a low monthly cost.</p>

Control Your Data

Stay in control of privileged information with user logins and permission controls. Assign full, restricted or view-only access to your users in order to control access to, and dissemination of, sensitive fleet information.

Are your vessels on charter?















MAT allows you to:

- Monitor hours of usage and areas of operation
- Identify and monitor incidents
- Download historical position data for use in arbitration

Global Support Network

We offer our customers 24/7/365 multilingual support from our offices in the UK, Hong Kong and Panama. Our global teams of product experts provide setup and ongoing support, technical support, training, troubleshooting and diagnostics, by phone and email.

Additionally, our global network of over 60 distributors offers sales and service support in your local language and time zone.

HARDWARE	 <p>MAT-IDP690 (IsatData Pro)</p>	 <p>MAT-GS (Globalstar)</p>
POWER	 Mains powered	 Battery powered
COMMUNICATION	 Two way	 One way
PROGRAMMABLE	 Over the air	 In the field
POSITION REPORTING	 Automatic  On-demand  Variable	 Automatic
COVERAGE		

FEATURE	DESCRIPTION
---------	-------------

TECHNOLOGY	
Improved interface	New New interface that is more modern and easier to use than ever before
Mobile optimised	New MAT is mobile optimised so that you can manage your fleet from your desktop, laptop, tablet, smartphone or any internet-enabled device
Web-based	No downloads, no software to install, no hassle. Simply log in, and start managing your fleet
Secure	HTTPS encryption, password protected logins
Satellite tracking	Reliable and secure satellite tracking

USERS	
Unlimited users	Create unlimited users
Manage permissions	Control user access with logins and permissions

MAPS	
Full-screen maps	New Full-screen interactive maps with easy drag-to-pan and click-to-zoom navigation
4 map options	New Street, hybrid and satellite maps from Mapbox plus C-Map marine charts
Quick search	New Search for a ship to automatically zoom and pan to its location

POSITION REPORTING	
Variable	Change your reporting rate
On-demand	Request a real-time position report

LAYERS	
Zones	Overlay key industry and custom operational zones on the map
Weather	Overlay weather conditions including: cyclones, sea surface temperature, pressure, wind speed & direction, wave height, wave direction and more
Points of interest	Create and display points of interest

NOTIFICATIONS	
Email & SMS	Send notifications to unlimited recipients, by email and SMS
Zone notifications	Alerts you when a ship is detected inside a defined zone or area (unlimited zones)
Overdue position reports	Alerts you if a ship does not report on schedule

REPORTS	
Downloadable reports	View, download and share your fleet's position history

HARDWARE	
MAT-IDP690	New Ideal for powered marine assets, tugs, support vessels, workboats and fishing vessels
MAT-GS	New Ideal for unpowered marine assets, barges, "dead" tows and unattended installations
Backwards compatible	Also compatible with legacy hardware: MAT1, MAT3 and MAT5

Copyright © Pole Star, all rights reserved. Pole Star reserves the right to change at any time without notice, information contained in this document. Valid as of 15.05.2014.
Pole Star will use reasonable endeavours to track your transceiver and deliver your position reports. However, sometimes this is not possible due to factors beyond our control, such as satellite communications failure.